



the
ACCOMMODATION
BUREAU

7 Turf Street, Bodmin, PL31 2DJ

Tel : 01208 78480

Fax : 01208 78985

bodmin@theaccommodationbureau.com

www.theaccommodationbureau.com



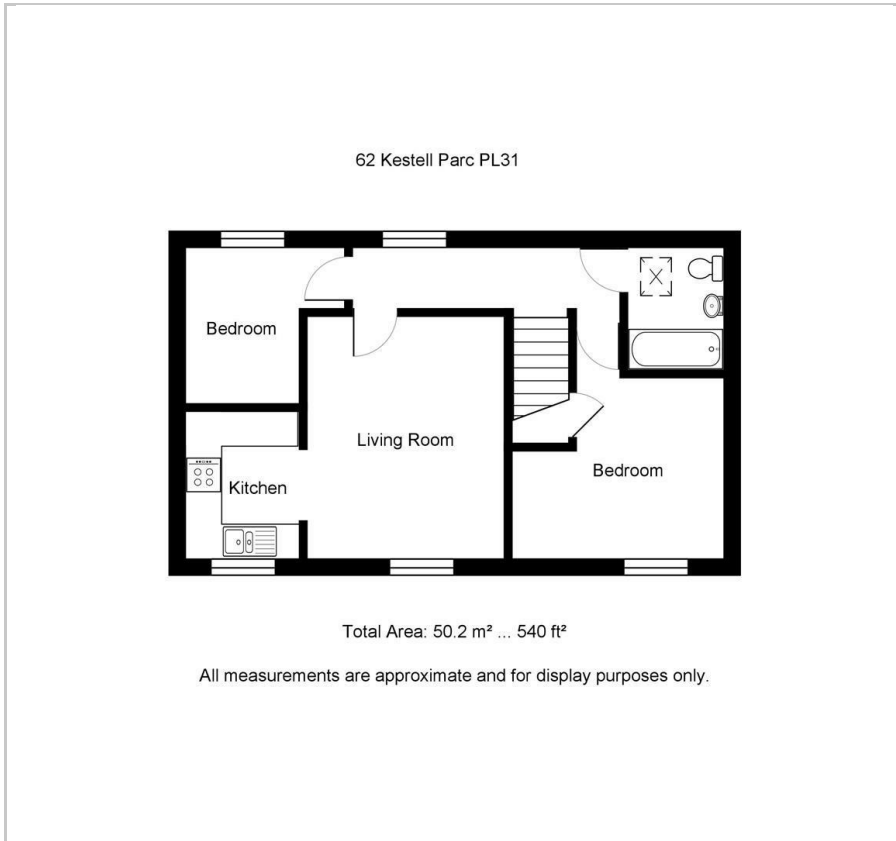
62 Kestell Parc

Bodmin, PL31 1HP

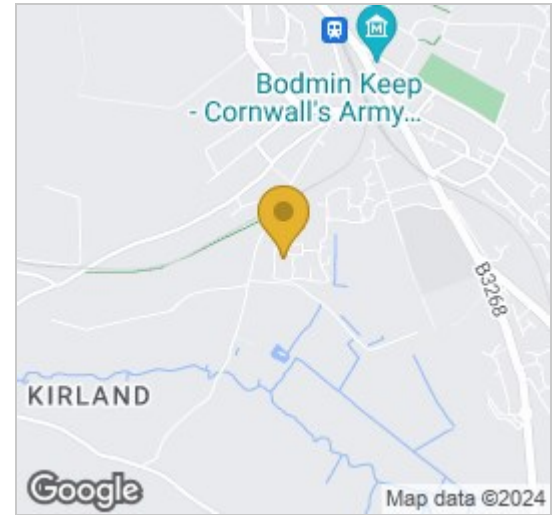
£775 PCM



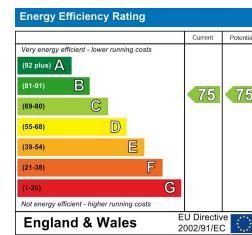
Floor Plan



Area Map



Energy Efficiency Graph



Viewing

Please contact The Accommodation Bureau Bodmin Office on 01208 78480 if you wish to arrange a viewing appointment for this property or require further information.

- Modern Kitchen
- Countryside Views
- Allocated Parking
- Enclosed Garden
- Close To Bodmin College
- Large Storage Cupboard

A well-maintained 2-bedroom coach house apartment in a residential area.

This modern 2 bedroom apartment is located on the popular Wainhomes development only a short walk to Bodmin College. Inside, the apartment consists of a private entrance with stairs to the first floor. The hallway leads to the open plan lounge/kitchen/diner. The modern kitchen includes a gas hob and an electric oven with spaces for a washing machine and fridge/freezer.

There is one double bedroom & one single bedroom. The bathroom has an electric shower over the bath. The property has gas central heating.

There is one allocated parking space to the rear. There is a small enclosed garden. Also to the rear is a large storage cupboard access from the outside of the property.

Energy Rating C (75). Council Tax Band A. Deposit £890. Sorry, no pets or smokers.



These particulars, whilst believed to be accurate are set out as a general outline only for guidance and do not constitute any part of an offer or contract. Intending purchasers should not rely on them as statements of representation of fact, but must satisfy themselves by inspection or otherwise as to their accuracy. No person in this firm's employment has the authority to make or give any representation or warranty in respect of the property.