







About the property

Why we would rent this home:

This fantastic two-bed, two-bath first-floor apartment on Queens Walk offers a rare blend of peaceful residential living with exceptional accessibility. Perfectly positioned on a prime tree-lined street nestled between the charming, boutiquey Pitshanger Village and the vibrant hub of Ealing Broadway, it gives you everything you could want on your doorstep.

The flat itself sits within a popular, well-maintained and secure purpose-built block, offering all the practical advantages of this style of development while retaining a more private, community feel. As the building is a relatively small development, it benefits from a quieter atmosphere without the crowds often associated with larger blocks. The apartment is energy-efficient, helping to keep running costs down, and features well-proportioned rooms throughout, making it both comfortable and highly functional for day-to-day living. The apartment boasts the rare benefit of an allocated parking space and access to a lovely communal garden for games and picnics when the weather allows!

Key features

- Two-Bed Two-Bath First Floor Apartment
- Lovely Communal Garden
- Allocated Parking Space
- Nestled Perfectly Between Pitshanger & Ealing Broadway
- Prime Tree-Lined Street
- Well-Maintained Popular Development
- Fantastic Schools & Parks Nearby
- Available Furnished or Unfurnished

Material information

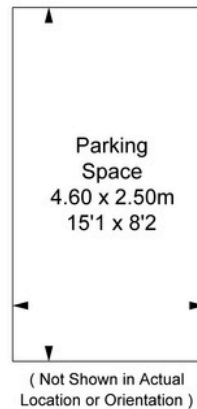
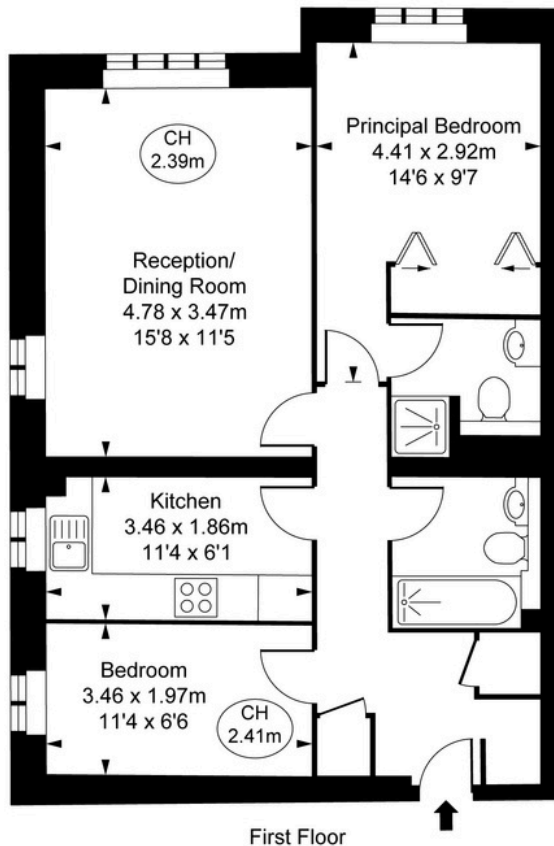
- Council Tax - **Band E**
- Guide Price - **£2,000 PM**





PAUL LESLIE
 Director
 020 3488 6445
 07738 401 822
 paul@leslieandcompanyuk.com

Alexandra Court,
 Queens Walk, W5
 Approximate Gross Internal Area
59.52 sq m / 641 sq ft
 (CH = Ceiling Heights)



This plan is not to scale. It is for guidance and not for valuation purposes.
 All measurements and areas are approximate only, and have been prepared in accordance with the current edition of the RICS Code of Measuring Practice.
 © Fulham Performance

