



LESLIE & CO

CROFT GARDENS, HANWELL, EALING, LONDON, W7

Guide Price: **£850,000**



 Leslie & Co





About the property

What the owner loves:

We have loved living in our family home for over 30 years. We previously lived in the area and wanted to stay local because of the facilities, the sense of community and greenery. We were attracted to the light and airy space this house offered and being an end of terrace, with gardens both at the front and the rear. It is conveniently located within walking distance of shops in West Ealing and a short bus ride to Ealing Broadway and close to the popular Grosvenor neighbourhood pub.

Croft Gardens has been a stable community over the years and some neighbours have lived in the street since we moved in and more recently younger families having moved in attracted by the Ofsted rated Outstanding Oaklands Primary School. We like the close proximity to Elthorne Park, Grand Union Canal and Boston Manor Park.

The transport links into central London and to Heathrow and Reading have been transformed with the Elizabeth Line from Hanwell and West Ealing stations.

Key features

- End Terrace Family Home
- Potential to Extend (STPP)
- Lovely Sunny Private Garden
- Private Garage
- Close to Outstanding Schools
- Surrounded by Wonderful Green Spaces
- Exceptional Transport Links
- Nestled Between Hanwell & Northfields

Material information

- Tenure - **Freehold**
- Council Tax - **Band E**
- Guide Price - **£850,000**



PAUL LESLIE

Director
020 3488 6445
07738 401 822
paul@leslieandcompanyuk.com

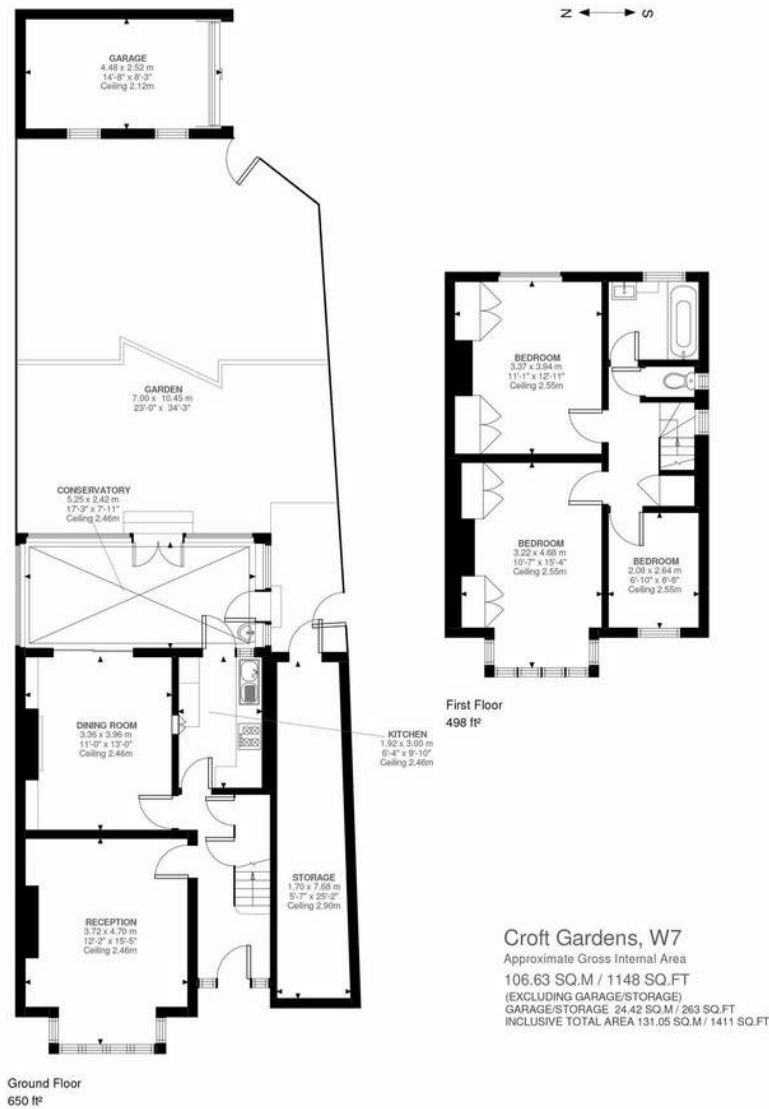
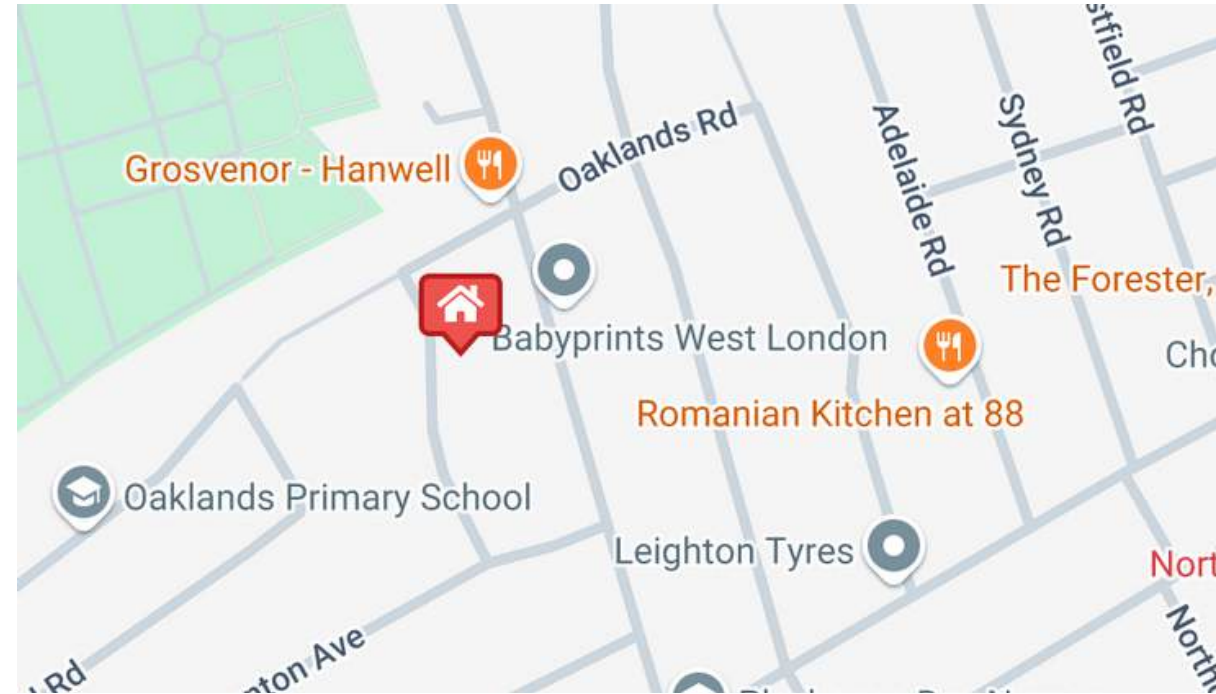
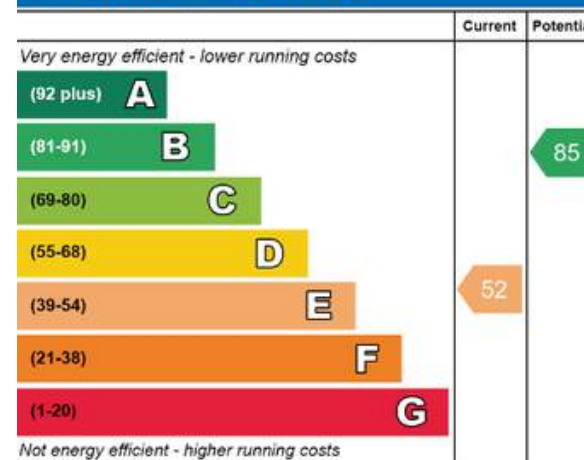


Illustration for identification purposes only. Not to scale.



Energy Efficiency Rating



Environmental Impact (CO₂) Rating

