



LESLIE & CO

DRAYTON GARDENS, EALING, LONDON, W13

Guide Price: **£3,000 PCM**



 Leslie & Co









## About the property

What the owners love...about the area:

We love our area for so many reasons. It's a beautiful and quiet street with a strong sense of community - our safe "Play Street" is brought to life by the monthly neighbourhood events from Spring to Autumn, incidentally organised by one of our many friendly neighbours!

We're surrounded by lovely parks in every direction, all within easy walking distance. Fitness enthusiasts are spoiled for choice with several gyms such as Anytime Fitness, PureGym, and Energym. Social and recreational opportunities abound too, with golf and tennis facilities in the vicinity.

Being right next to the Elizabeth line station gives us instant access to Central London, making commuting or exploring the city incredibly convenient.

Everyday needs are easily met with a large Waitrose nearby, as well as a big Sainsbury's just across the Broadway and a Lidl close by. And we're just a short distance from Ealing Broadway, home to a variety of restaurants and a great shopping centre.

The area is also known for its excellent schools, including high-quality state and private options, as well as French and Japanese schools locally.

## Key features

- Beautiful Family Home
- Idyllic Tree-Lined Street
- Perfect Blend of Old & New
- Moment from Elizabeth Line
- Fantastic Schools Nearby
- Available Mid-August
- Close to Lovely Parks
- Furnished or Unfurnished

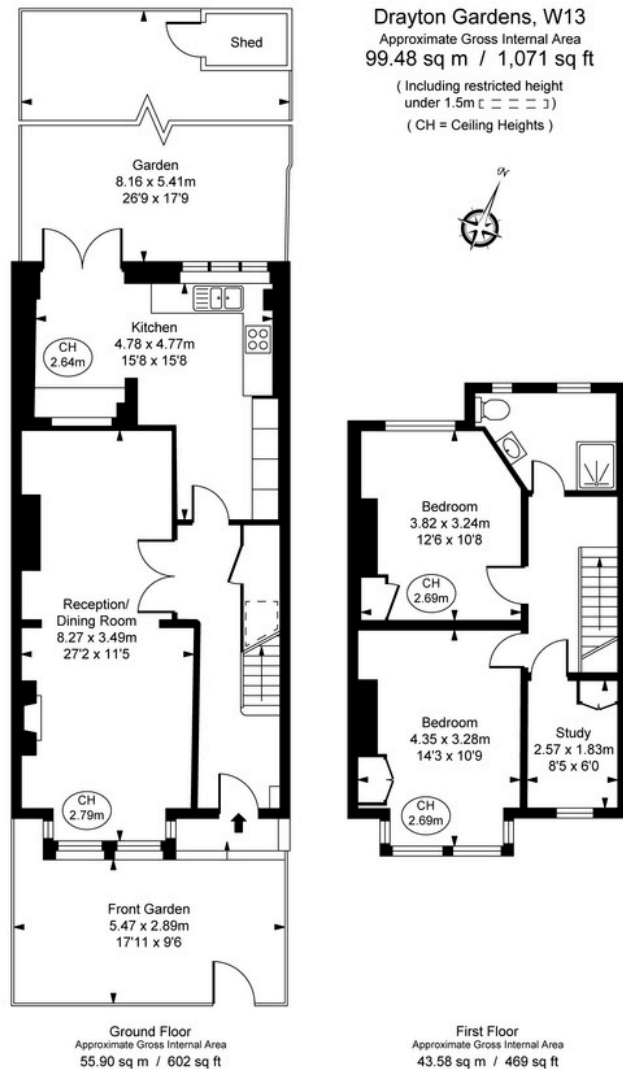
## Material information

- Council Tax - **Band E**
- Guide Price - **£3,000 PCM**





**PAUL LESLIE**  
 Director  
 020 3488 6445  
 07738 401 822  
 paul@leslieandcompanyuk.com



This plan is not to scale. It is for guidance and not for valuation purposes.  
 All measurements and areas are approximate only, and have been prepared in accordance with the current edition of the RICS Code of Measuring Practice.  
 © Fulham Performance

