



LYNTON AVENUE, EALING, LONDON, W13

Guide Price: **£3,300 PM**



 Leslie & Co





About the property

Nestled within the heart of Ealing, Lynton Avenue presents a stunning opportunity for families seeking an exquisite living experience in London. This remarkable five-bedroom house exudes charm and character, offering ample space for a growing family to thrive in comfort and style.

As you step through the front door of this beautiful family home, you are greeted by a warm and inviting atmosphere, accentuated by delightful period features that resonate with the property's rich heritage. The well-proportioned rooms boast an abundance of natural light, creating an airy and welcoming environment throughout the residence.

Each of the five generous bedrooms offers a serene retreat for family members, with the potential to extend the living space further (STPP) to accommodate your bespoke needs. Whether it's a home office, a playroom for the children, or additional en-suite facilities, the possibilities are truly enticing.



Key features

- Beautiful Family Home
- Potential To Extend (STPP)
- Close To Elizabeth Line
- Wide Tree-Lined Street
- Five Generous Bedrooms
- Lovely Period Features
- Stunning Mature Garden
- Excellent Schools Nearby

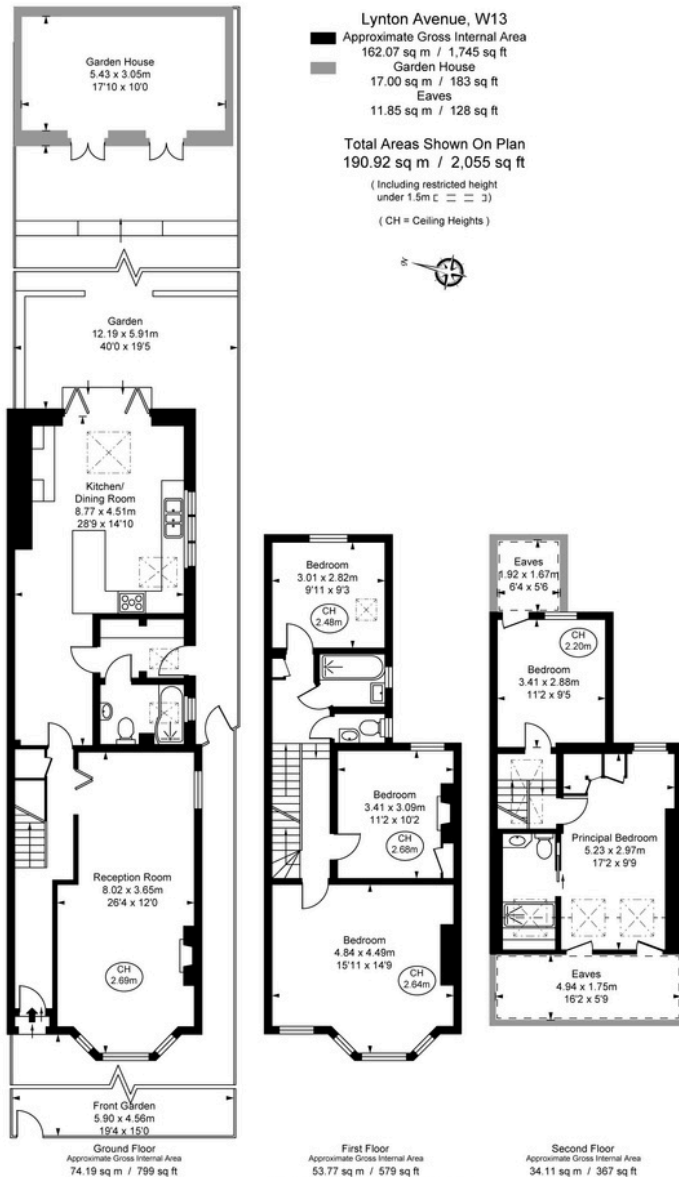
Material information

- Tenure - **Freehold**
- Council Tax - **Band G**
- Guide Price - **£3,300 PM**

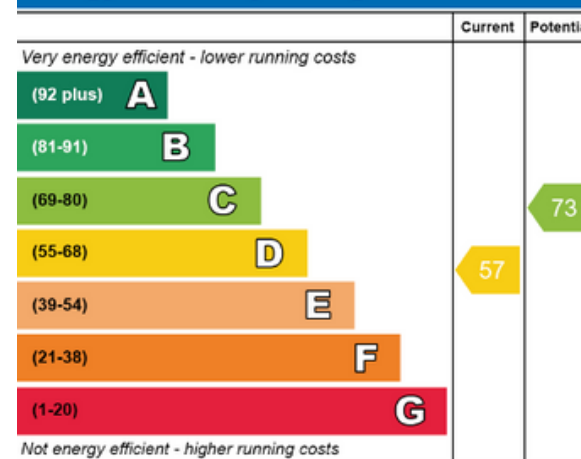


PAUL LESLIE

Director
 020 3488 6445
 07738 401 822
 paul@leslieandcompanyuk.com



Energy Efficiency Rating



Environmental Impact (CO₂) Rating

