



**HALE OFFICE:**  
212 ASHLEY ROAD, HALE,  
CHESHIRE WA15 9SN  
TEL: 0161 941 6633  
FAX: 0161 941 6622  
Email: hale@watersons.net

**SALE OFFICE:**  
91-93 SCHOOL ROAD, SALE,  
CHESHIRE M33 7XA  
TEL: 0161 973 6688  
FAX: 0161 976 3355  
Email: sale@watersons.net



INDEPENDENT ESTATE AGENTS  
PROPERTY SALES AND RENTALS



**HALE OFFICE:**  
212 ASHLEY ROAD, HALE,  
CHESHIRE WA15 9SN  
TEL: 0161 941 6633  
FAX: 0161 941 6622  
Email: hale@watersons.net

**SALE OFFICE:**  
91-93 SCHOOL ROAD, SALE,  
CHESHIRE M33 7XA  
TEL: 0161 973 6688  
FAX: 0161 976 3355  
Email: sale@watersons.net



INDEPENDENT ESTATE AGENTS  
PROPERTY SALES AND RENTALS



24 Croft Road, Wilmslow, Cheshire, SK9 6JJ

£3,500 PCM

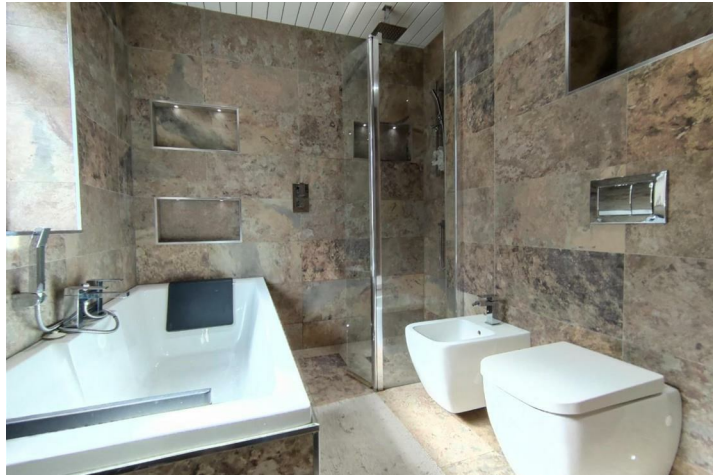
Directions

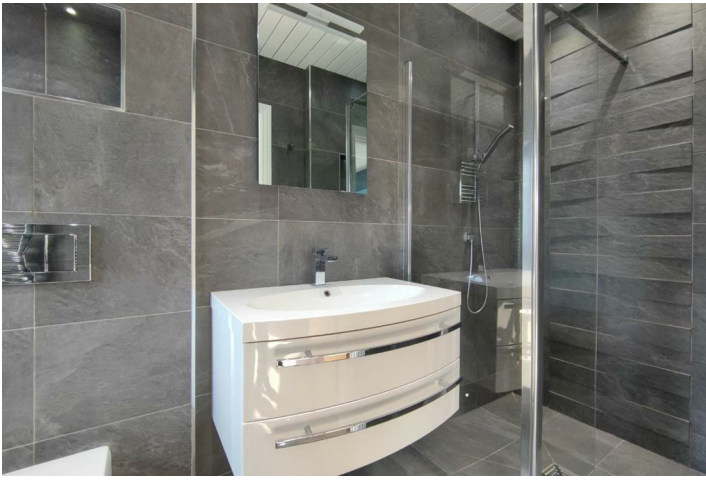
A STUNNING FIVE BEDROOM DETACHED LOCATED ON A POPULAR CUL DE SAC. Hall. Open Plan Living Dining Kitchen. Family Room. Sitting Room. Study. Ground Floor WC. Four Double Bedrooms plus One Single Bedroom. Modern Family Bathroom plus 2 En-Suite Shower Rooms. Tax Band E. UNFURNISHED. Available from 21st August.



















# Floorplans