



£350,000
Freehold

9 Winnards Park, Sarisbury Green
Southampton, Hampshire SO31 7BX



Quick View



3 Bedrooms



No Garage



2 Living Rooms



1 Bathroom



End of Terrace House



EPC Rating C



Off Road Parking



Council Tax Band C

Reasons to View

- For fitness enthusiasts, Holly Hill Leisure Centre is nearby, or it's a great spot to take the kids for a swim on the weekend
- The separate front door leading straight into the utility area means you can leave the mud outside after a walk around Holly Hill
- The stylish kitchen features sleek white gloss units, while the utility room keeps the washing machine neatly out of sight
- The rear conservatory provides extra space, perfect for a playroom or separate sitting room where you can relax and enjoy the garden
- There is space for all the family to grow, with two spacious double bedrooms and a further good size single.
- The school run couldn't be easier, with Sarisbury Green Infant and Junior Schools both located less than a mile away

Description

To the front of the property, a block-paved driveway provides side-by-side parking for two cars, complemented by a low-maintenance front garden that adds to the home's curb appeal.

Step into the entrance porch, offering space to hang coats and store shoes before stepping through into the hallway. A side window brings in natural light, while the stairs lead to the first floor. There's also a handy understairs storage cupboard, along with doors to the kitchen, living room, and a convenient downstairs cloakroom.

The spacious living room runs the full length of the property and easily accommodates both a comfortable seating area and a dining table. Double doors open into the conservatory, offering a fantastic additional living space with views over the rear garden.

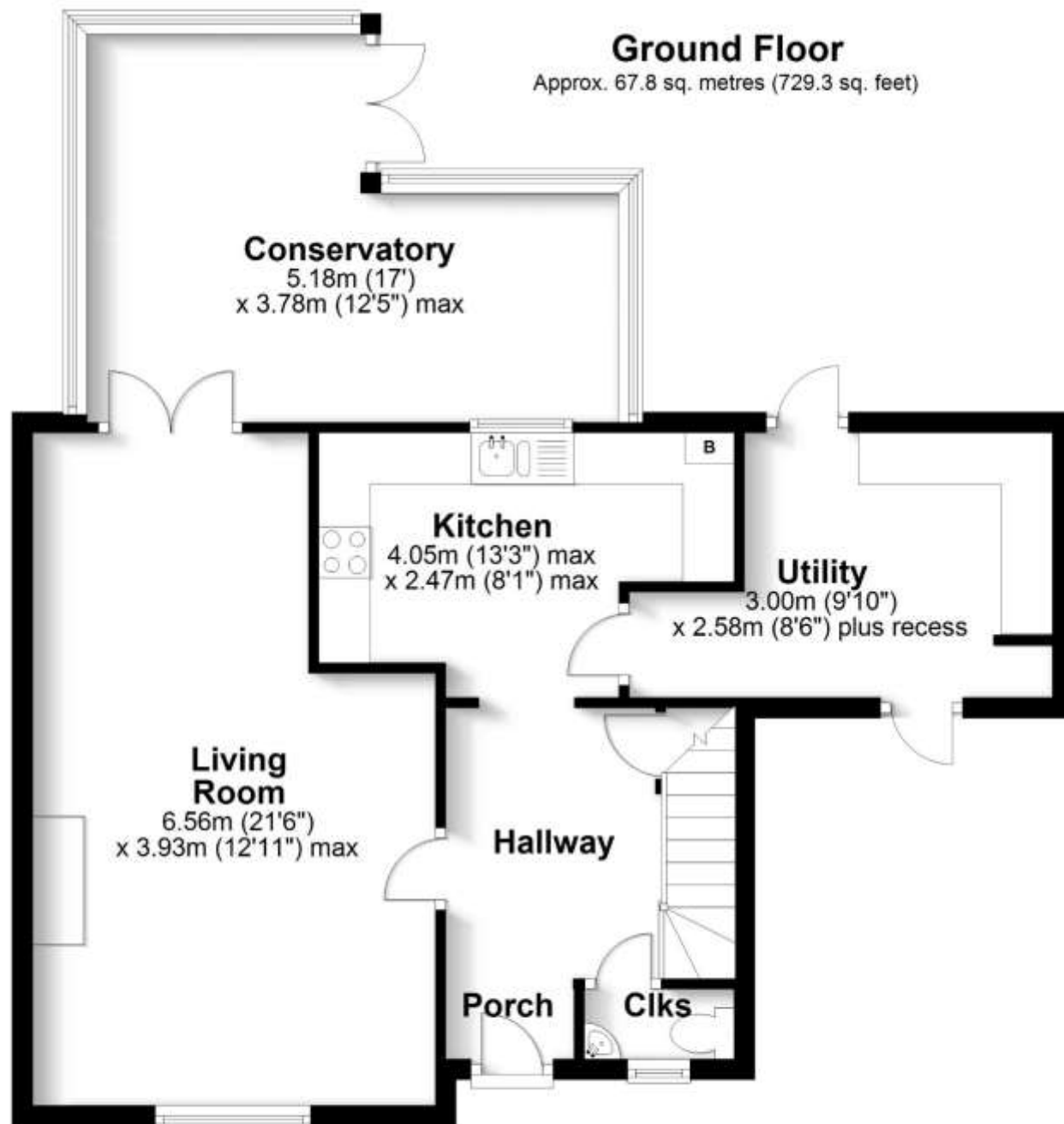
The modern kitchen is complete sleek white gloss units and wood effect worktops is fully equipped with a built-in gas hob, double oven, integrated dishwasher, and fridge—everything you need is already in place. A useful utility room adjoins the kitchen, fitted with base units and space for a washing machine. An external door here offers convenient access to the garden, ideal for pet owners.

Upstairs, the three bedrooms are served by a recently refitted family shower room featuring a walk in shower, WC and sink. Two of the bedrooms are spacious doubles, while the third is a well-proportioned single.

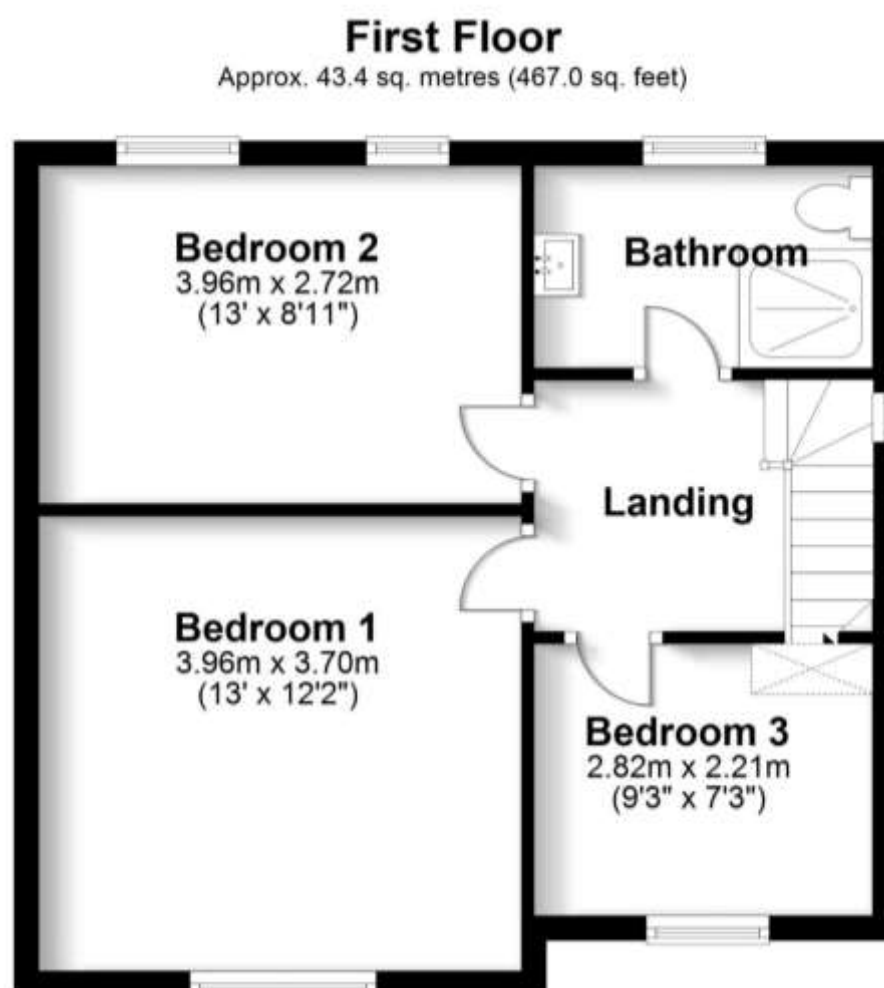
The rear garden has been thoughtfully landscaped, offering a mix of decking, lawn, a garden shed, and even a vegetable patch—perfect for those with green fingers.

Directions

<https://what3words.com/seures.backswing.charmingly>



Total area: approx. 111.1 sq. metres (1196.3 sq. feet)



Robinson Reade endeavour to supply accurate and reliable property information in line with Consumer Protection from Unfair Trading Regulations 2008, however please contact the office before viewing if there is any aspect which is particularly important to you and we will be pleased to provide the relevant information. These property details do not constitute any part of an offer or contract, all measurements are approximate. Any services, appliances and heating systems listed have not been checked. We must point out that where we introduce you to a third party who offers conveyancing, removal or financial services, e.g. legal, mortgage and insurance advice, we may earn a commission. For more information go to www.robinsonreade.co.uk/referral-fees. Robinson Reade Ltd, Registered office: 10 Middle Road, Park Gate, Southampton, SO31 7GH, Co Reg No: 5185152



Pop in to see us at 10 Middle Road, Park Gate, Southampton, Hampshire, SO31 7GH
 Email us sales@robinsonreade.co.uk Visit us www.robinsonreade.co.uk
 Call us on 01489 579009

Independent Sales & Letting Agents for the Strawberry Coast