







**£495,000**  
Freehold


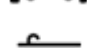


**9 Shepherds Purse Close,  
Locks Heath, Southampton, Hampshire SO31 6DF**





## Quick View

	3 Bedrooms
	2 Living Rooms
	Detached House
	Driveway Parking

	Carport & Garage
	3 Bathrooms
	EPC Rating TBC
	Council Tax Band E

## Reasons to View

- Originally built as a four bedroom home, the first floor has been reconfigured to provide a large and luxurious ensuite shower room so the primary bedroom suite spans the full width of the house.
- For a sociable family, this open-plan kitchen/dining/living space will make this a wonderful party house, with double doors from the conservatory to open up onto the garden in the warmer months.
- Convenient Locks Heath location, it's just 0.7 miles to Waitrose, Costa and much more at the Locks Heath Centre and both primary & secondary schools are in walking distance.
- The secluded, low maintenance south/west facing garden is a real sun trap, and the perfect venue for summer BBQs sat under the pergola.
- Marble counter tops and upstands add a quality finish to this cream shaker style kitchen with integrated appliances and a double range oven.
- The inglenook style fireplace with gas stove in the sitting room is perfect for those colder evenings when you want to shut the world out and enjoy a bit of cosy family time watching a movie.

## Description

This detached home has a lovely welcoming feel having been beautifully maintained and improved by the current owners. Secluded from the road by a mature hedge there is a private shingle garden area and off road parking on the block paved driveway. The carport to the side provides covered parking and in turn leads to the garage which has power and light, a personnel door into the garden and plumbing for the washing machine.

The very spacious hallway has practical wood flooring with stairs leading to the first floor and a storage cupboard beneath. The downstairs shower room is very handy for guests with lots of space for coats and shoes. The sitting room has a deep bay window to the front with fitted shutter blinds and a wonderful inglenook style fireplace with fitted gas stove and wooden mantle. Spanning the rear of the house the kitchen/dining room is fitted with cream shaker effect units with integrated dishwasher and fridge/freezer and a free-standing range oven. The marble counter-tops extend into the peninsular breakfast bar with feature lighting over, separating the dining area. An open archway from the dining area leads into the conservatory which has an insulated roof and double doors out to the rear garden. With one high brick wall to the side and fitted shutter blinds this is a very comfortable area to sit and enjoy the garden.

On the first floor the layout has been reconfigured creating a primary suite spanning the front of the house, entering a lobby area there are arches into the bedroom, fitted with an extensive range of wardrobes, and to the ensuite. The ensuite was originally the third bedroom so is a very generous size and is fitted with a modern white suite with double shower cubicle. Bedroom two is a generous double room, perfect for guests with bedroom three currently used as a home office and housing the airing cupboard with Worcester combination boiler. The main bathroom is fully tiled with a white suite with vanity unit for storage.

The rear garden is very secluded with a mature conifer hedge to the rear, being south/west in aspect it is also a bit of a sun trap. Paved for ease of maintenance there is a timber pergola giving some shade and creating the perfect al fresco dining spot. There is a side pedestrian gate to the car port which also has double gates that can be closed for security or privacy.

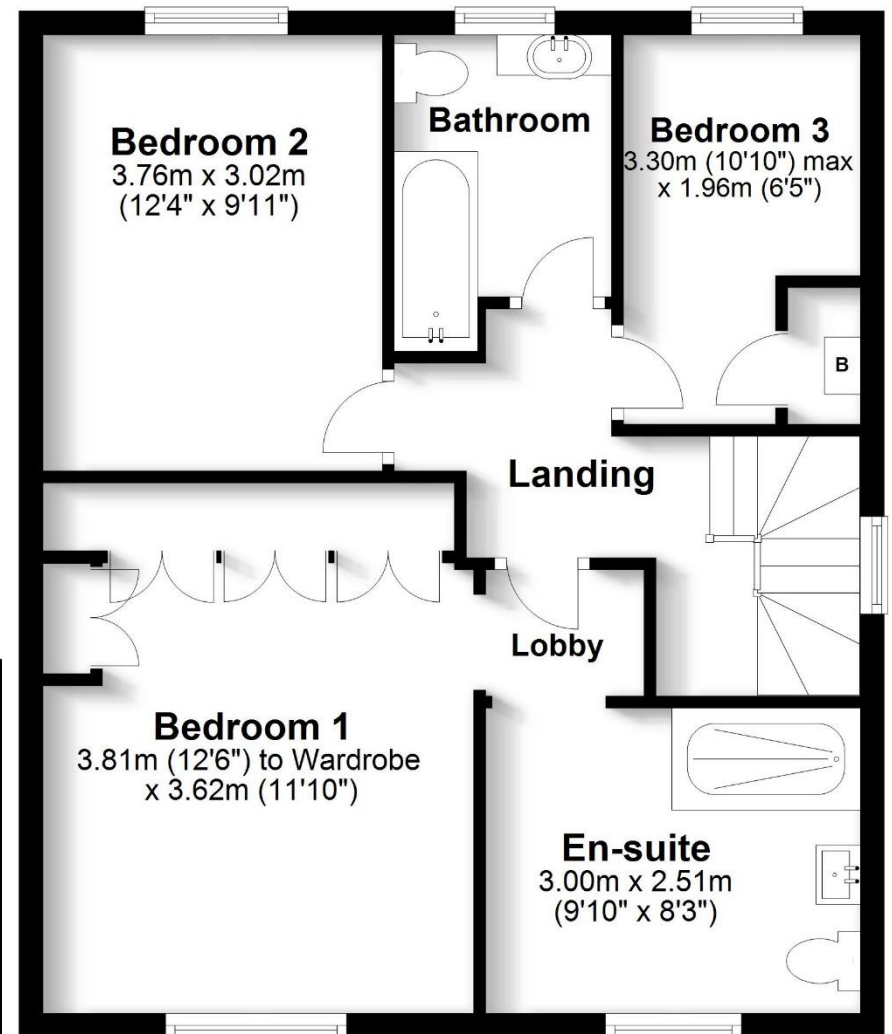
This really is a super spot, just a 10-15 minute walk to the Locks Heath Centre or about 30 mins to Warsash Village whilst a short stroll over the road will take you to Priory Park, ideal for a quick morning walk with the dog.

## Directions

<https://what3words.com/gamer.clerk.baker>

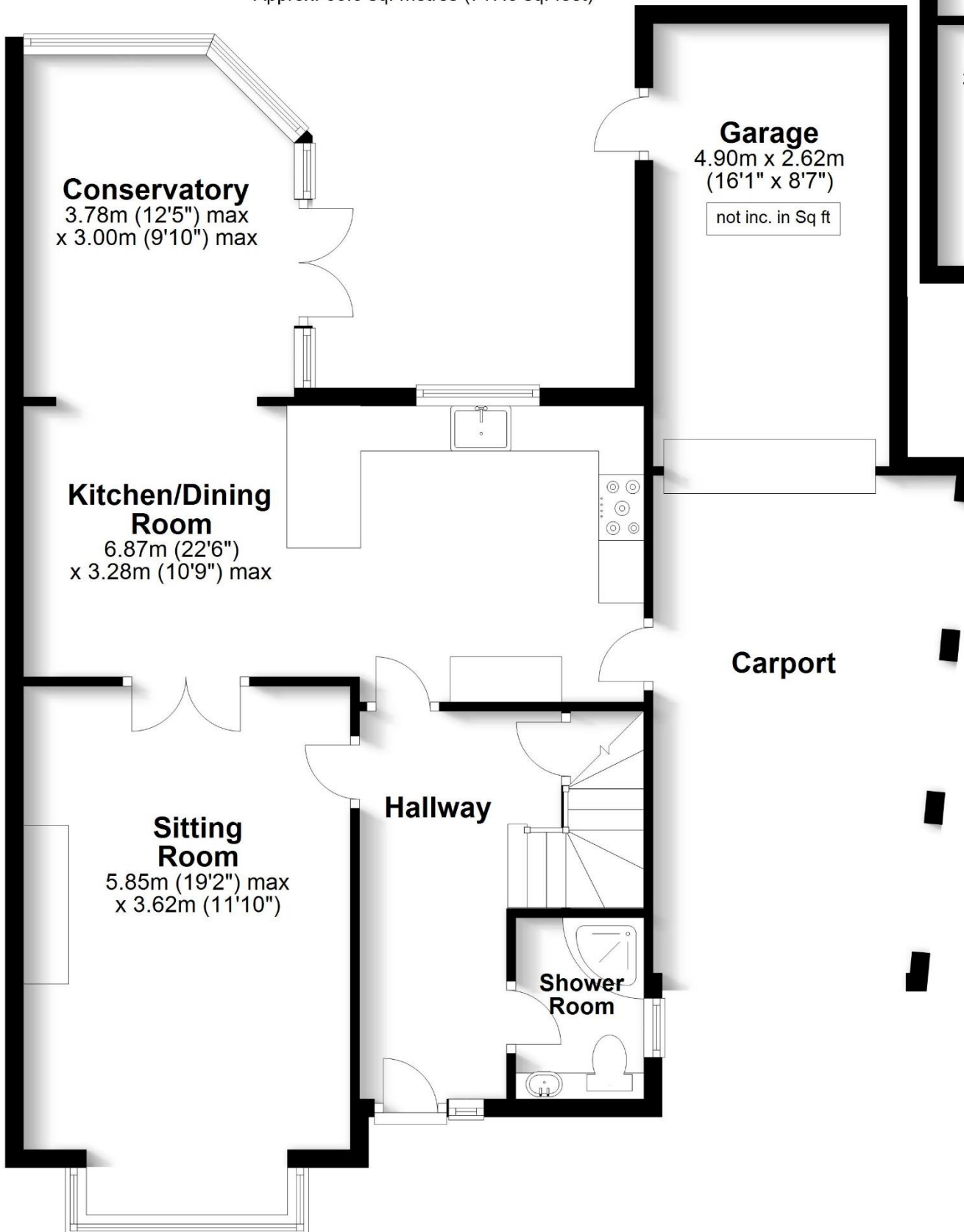
## First Floor

Approx. 56.8 sq. metres (610.9 sq. feet)



## Ground Floor

Approx. 66.6 sq. metres (717.3 sq. feet)



Carport

Total area: approx. 123.4 sq. metres (1328.2 sq. feet)

Robinson Reade endeavour to supply accurate and reliable property information in line with Consumer Protection from Unfair Trading Regulations 2008, however please contact the office before viewing if there is any aspect which is particularly important to you and we will be pleased to provide the relevant information. These property details do not constitute any part of an offer or contract, all measurements are approximate. Any services, appliances and heating systems listed have not been checked. We must point out that where we introduce you to a third party who offers conveyancing, removal or financial services, e.g. legal, mortgage and insurance advice, we may earn a commission. For more information go to [www.robinsoneade.co.uk/referral-fees](http://www.robinsoneade.co.uk/referral-fees). Robinson Reade Ltd, Registered office: 10 Middle Road, Park Gate, Southampton, SO31 7GH, Co Reg No: 5185152





Pop in to see us at 10 Middle Road, Park Gate, Southampton, Hampshire, SO31 7GH  
Email us [sales@robinsonreade.co.uk](mailto:sales@robinsonreade.co.uk) Visit us [www.robinsonreade.co.uk](http://www.robinsonreade.co.uk)  
Call us on 01489 579009

Independent Sales & Letting Agents for the Strawberry Coast