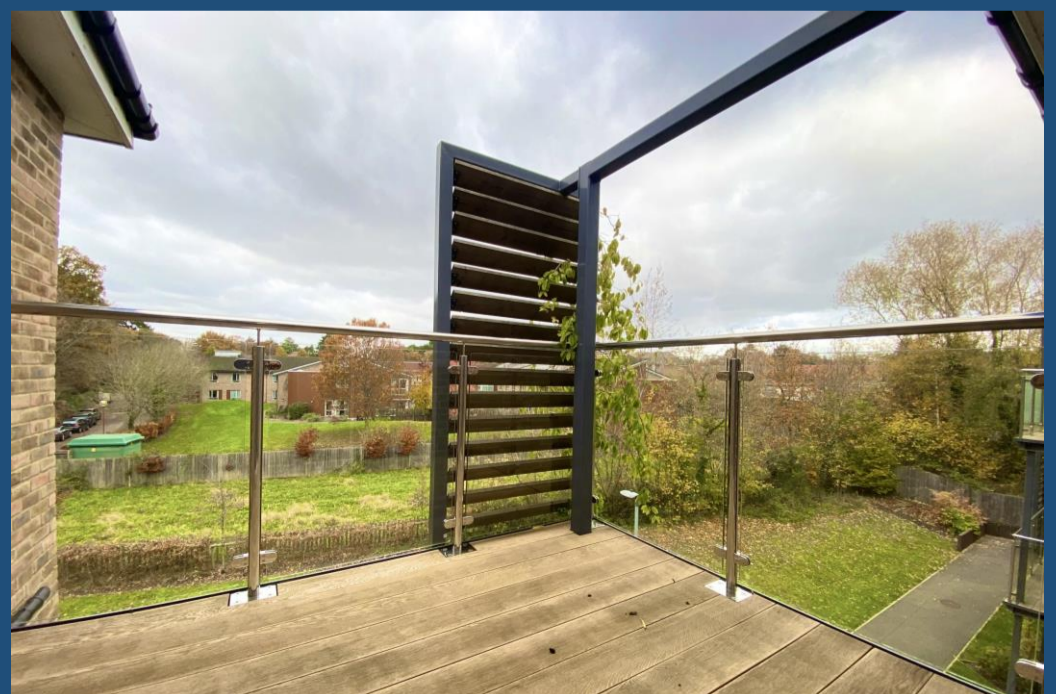




£407,000
Leasehold

47 Meadow Court, 15 Hamilton Road
Sarisbury Green, Southampton, Hampshire SO31 7PU



Quick View



2 Bedrooms



None



1 Living Room



2 Bathrooms



Retirement Apartment



EPC Rating B



Ask about Parking



Council Tax Band D

Reasons to View

- An exceptionally well-designed complex meets all your needs. A sociable residents lounge is the hub of this community, with weekly organised events to choose from, and a gardening club if you prefer.
- With carpets to choose, and underfloor heating, you'll want to kick your shoes off, and feel welcomed by the warm cosy feel.
- The stylish white bathroom and Ensuite boast anti slip porcelain flooring, heated towel rails and underfloor heating for luxury and comfort.
- The well-designed Kitchen has been fitted with an induction hob, integrated oven, microwave plus a fridge freezer. The washing machine is in the separate utility cupboard – eliminating noise.
- The 24 /7 Anchor call system provides complete peace of mind, should you ever need to use it, knowing someone is always on hand.
- Subletting is an option here (T's & C's apply).

Description

This luxury complex, built for the over 55's is a safe environment to enjoy living with like minded people. The complex offers the retirement community an array of lifestyle amenities which include a hairdressing salon and beauty treatment room, as well as a guest suite and an inviting café to enjoy a meal when you don't fancy cooking yourself.

We are sure you will appreciate the impeccably maintained communal facilities and gardens and feel reassured by the available support ensuring your changing needs are met.

Number 47 is located on the top floor and offers 990 Sq. Ft of luxury living with a South facing balcony, so you can enjoy the sun year-round.

Neutrally decorated, and with skimmed ceilings gives a spacious airy feel, and the large windows throw natural light in.

The spacious hallway is home to the handy utility cupboard which washing machine. The main bathroom is very well fitted with a bath and a double headed shower over.

The open plan sitting/dining room is flooded with natural light and opens onto the balcony, and to the kitchen which, again is very well fitted with white gloss units and fitted appliances with a window over looking the gardens.

The main bedroom has a double wardrobe and enjoys the ensuite walk in shower. The 2nd bedroom is ideal for guests or a study/hobbies room.

Other Information

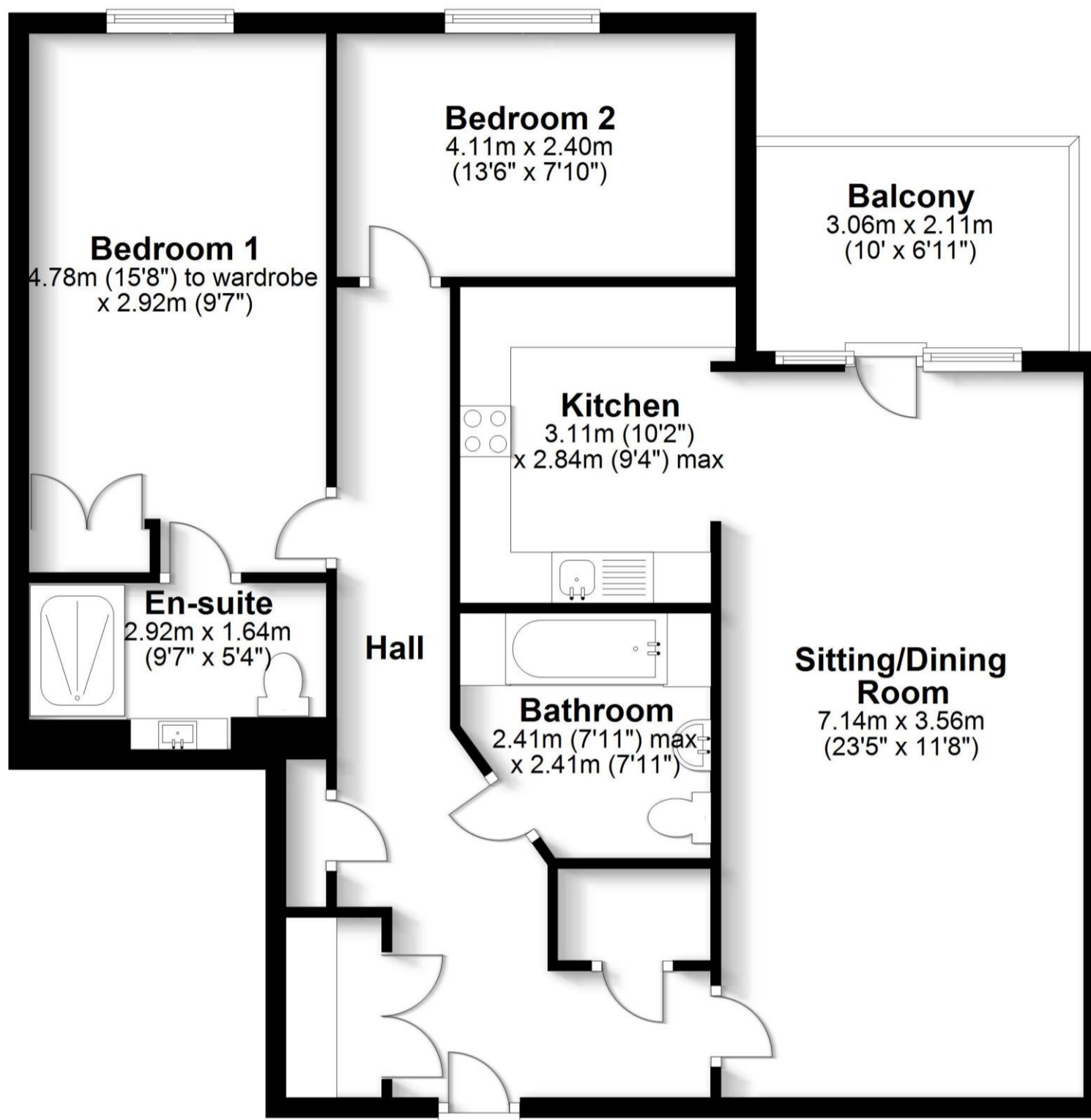
The 125 Year lease commenced 1/12/2018. The service charge is currently £395.42, payable monthly. Upon sale, there is an admin fee payable of £660 + 3% of the sale price towards the sinking fund. Up to one car parking permit may be issued per apartment for which there is an annual charge of £250.00. The permit is subject to renewal annually.

Directions

<https://what3words.com/thread.changed.dramatic>

Second Floor Apartment

Approx. 84.0 sq. metres (903.9 sq. feet)



Total area: approx. 84.0 sq. metres (903.9 sq. feet)

Robinson Reade endeavour to supply accurate and reliable property information in line with Consumer Protection from Unfair Trading Regulations 2008, however please contact the office before viewing if there is any aspect which is particularly important to you and we will be pleased to provide the relevant information. These property details do not constitute any part of an offer or contract, all measurements are approximate. Any services, appliances and heating systems listed have not been checked. We must point out that where we introduce you to a third party who offers conveyancing, removal or financial services, e.g. legal, mortgage and insurance advice, we may earn a commission. For more information go to www.robinsonreade.co.uk/referral-fees. Robinson Reade Ltd, Registered office: 10 Middle Road, Park Gate, Southampton, SO31 7GH, Co Reg No: 5185152



Pop in to see us at 10 Middle Road, Park Gate, Southampton, Hampshire, SO31 7GH
Email us sales@robinsonreade.co.uk Visit us www.robinsonreade.co.uk
Call us on 01489 579009

Independent Sales & Letting Agents for the Strawberry Coast