

020 3965 7777

office@altoresidential.co.uk

altoresidential.co.uk

**ALTO**  
RESIDENTIAL



**Flat 4, 1 Nobel Close, London, NW9 5TF**

**£400,000**

 2  2  1  B

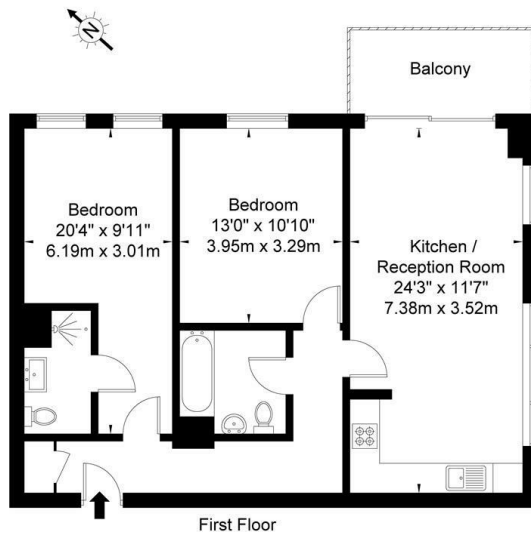
6th floor, First Central 200, 2 Lakeside Drive,  
Park Royal, London, NW10 7FQ

**CMP** | **PRS** Property  
Client Money Protect | Redress Scheme

## Floor Plan

### Theodor Court Nobel Close NW9 5TF

Approx Gross Internal Area = 74.7 sq m / 804 sq ft



Ref

Copyright

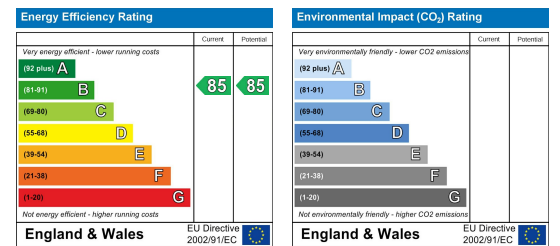
**BLEU  
PLAN**

The Floor plan is not to scale and measurements and areas shown are approximate and therefore should be used for illustrative purposes only. The plan has been prepared in accordance with the RICS code of Measuring Practice and whilst we have confidence in the information produced it must not be relied on. If there is any aspect of particular importance, you should carry out or commission your own inspection of the property.  
Copyright @ BLEUPLAN

## Area Map



## Energy Efficiency Graph



## Viewing

Please contact us on 020 3965 7777 if you wish to arrange a viewing appointment for this property or require further information.

- Modern Apartment
- Two Bedrooms, One with En-Suite Shower Room
- Open Plan
- Full length Balcony with Views Across the Area
- Bathroom
- Allocated Parking Space

A wonderful 2 bedroom apartment situated on the 1st floor of a modern development, the development is situated moments from Colindale Underground Station for links around the city.



These particulars, whilst believed to be accurate are set out as a general outline only for guidance and do not constitute any part of an offer or contract. Intending purchasers should not rely on them as statements of representation of fact, but must satisfy themselves by inspection or otherwise as to their accuracy. No person in this firm's employment has the authority to make or give any representation or warranty in respect of the property.