



291 London Road, Benfleet, Essex, SS7 5XP

An absolute gem of a property, this semi-detached bungalow sits on a large plot in a great South Benfleet location, central for Tarpots retail and restaurants, and Hadleigh town centre. For the children, the home is within the catchment for a selection of great primary and secondary schools.

The property has just been completely internally refurbished, with plush new carpets throughout, and a stylish neutral palette to allow you to truly put your own touches to your new home. The brand new bathroom suite is finished in on-trend marbled aquapanel and waterfall taps. The kitchen has been finished with funky hexagonal tiles, modern matte white units, and a brand new integrated oven and worktop ceramic hob.

The lounge features a large bay window, flooding the room with glorious natural light, and a gorgeous feature fireplace as a quirky focal point for the room.

Outside, you can fit up to 3 cars on the private driveway, and have gated side access to the large back garden, perfect for enjoying the late Summer sunshine.

- Two bedroom semi-detached bungalow
- Fantastic central location for Benfleet & Hadleigh
- Extensively refurbished throughout
- Off road parking for up to 3 cars
- Large rear garden
- Brand new kitchen and bathroom

£1,250 Per month

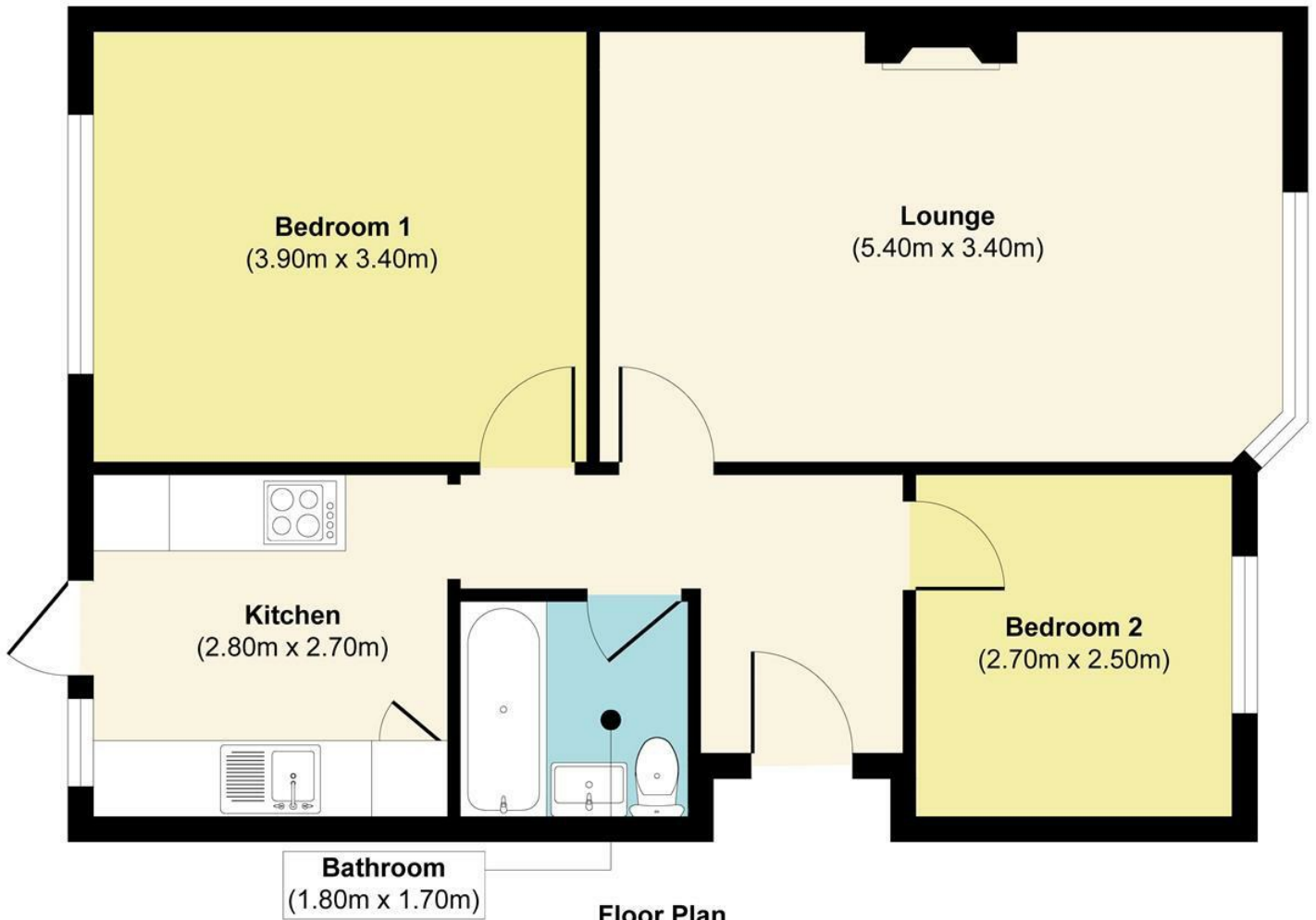


Illustration for identification purposes only, measurements are approximate, not to scale.
Produced by Elements Property

Energy Efficiency Rating		Current	Potential
Very energy efficient - lower running costs			
(92 plus) A			<div style="text-align: center;"> 88 63 </div>
(81-91) B			
(69-80) C			
(55-68) D			
(39-54) E			
(21-38) F			
(1-20) G			
Not energy efficient - higher running costs			
England & Wales		EU Directive 2002/91/EC	

Environmental Impact (CO ₂) Rating		Current	Potential
Very environmentally friendly - lower CO ₂ emissions			
(92 plus) A			
(81-91) B			
(69-80) C			
(55-68) D			
(39-54) E			
(21-38) F			
(1-20) G			
Not environmentally friendly - higher CO ₂ emissions			
England & Wales		EU Directive 2002/91/EC	