



# Davies Properties



## 40 Steadings Way

Exley Head, Keighley, BD22 6SD

£950 PCM





# 40 Steadings Way

Exley Head, Keighley, BD22 6SD

£950 PCM



Situated in the popular residential area of Steadings Way, Keighley, this modern semi-detached house presents an excellent opportunity for families and professionals alike. With three well-proportioned bedrooms, this property offers ample space for comfortable living. The inviting reception room serves as a perfect gathering space for family and friends, creating a warm and welcoming atmosphere.

The house features a well-appointed bathroom, ensuring convenience for all residents. The modern design of the property reflects contemporary living, making it an appealing choice for those seeking a stylish home.

Additionally, the property benefits from off-road parking, providing ease and accessibility in this desirable location. Steadings Way is situated in a friendly neighbourhood, close to local amenities and transport links, making it an ideal spot for those who appreciate both tranquillity and convenience.

This semi-detached house is a fantastic opportunity for anyone looking to settle in Keighley, combining modern living with a sense of community. Do not miss the chance to make this delightful property your new home.

## GROUND FLOOR

### Entrance Vestibule

Featuring a composite entrance door, central heating radiator, and staircase leading to the first floor.

### Living Room

14'5" x 12'6" (4.39 x 3.81)

Benefitting from a uPVC double glazed bay window to the front elevation and a central heating radiator.

### Dining Kitchen

15'9" x 8'10" (4.8 x 2.69)

Fitted with a range of contemporary wall and base units with complementary work surfaces and tiled splashbacks. Includes an integrated electric oven, gas hob with extractor hood above, and a porcelain sink with swan-neck mixer tap. A uPVC double

glazed window overlooks the rear elevation, and additional features include a central heating radiator, laminate flooring, and a combi boiler housed within a cupboard. Patio doors open out to the rear garden, providing a seamless connection between indoor and outdoor living—perfect for the summer months.

### W/C

4'3" x 4'3" (1.3 x 1.3)

Comprising a WC and pedestal hand wash basin, with a uPVC double glazed window to the side elevation. Finished with tile-effect laminate flooring and a chrome heated towel rail.

## FIRST FLOOR

### LANDING

Featuring a uPVC double glazed window to the side elevation, a central heating radiator, and a useful built-in linen cupboard.

### Bedroom 1

12'6" x 9'3" (3.81 x 2.82)

Benefitting from a uPVC double glazed window to the front elevation, a central heating radiator, and a spacious walk-in wardrobe.

### Bedroom 2

9'3" x 8'3" (2.82 x 2.51)

Offering a uPVC double glazed window to the rear elevation and a central heating radiator.

### Bedroom 3

7'2" x 6'2" (2.18 x 1.88)

Boasting a uPVC double glazed window to the rear elevation and a central heating radiator.

### Bathroom

6'3" x 6'2" (1.91 x 1.88)

With a modern three-piece suite comprising of vanity sink unit, W/C and panelled bath with shower mixer tap. Chrome heated towel rail, laminate panels to the walls and vinyl floor covering.

### EXTERIOR

The property benefits from a lawned garden to the front, a driveway to the side, and a south-facing patio

area to the rear, complemented by a tiered lawned garden—providing an ideal outdoor space to enjoy during the summer months.

### OTHER INFORMATION

~ Council Tax Band: C

~ Bond: £1,096

~ No Smokers

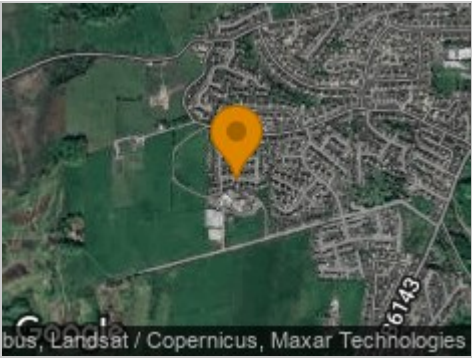
~ Small pets considered - one house-trained cat or small dog will be considered subject to an increased rent of £975.00 PCM



Road Map



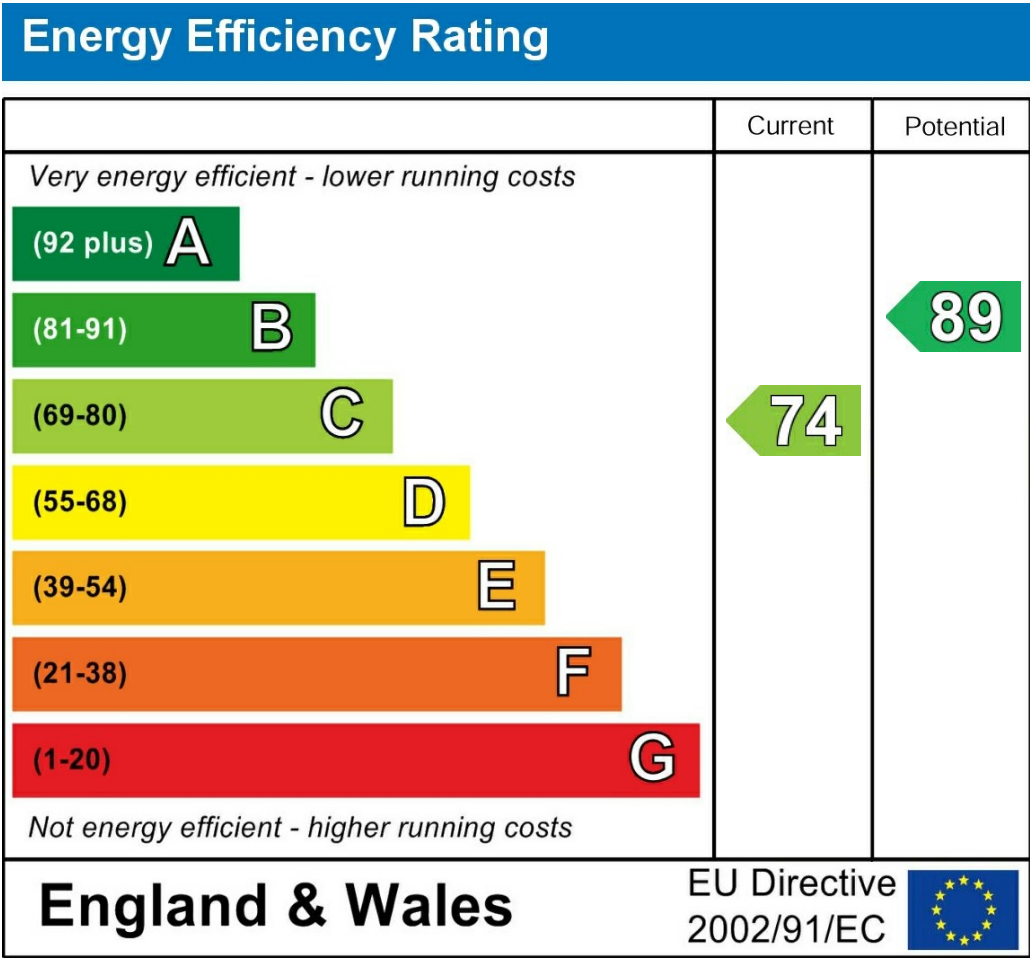
Hybrid Map



Terrain Map



Energy Efficiency Graph



Viewing

Please contact our Davies Properties Office on 01535 872018 if you wish to arrange a viewing appointment for this property or require further information.

These particulars, whilst believed to be accurate are set out as a general outline only for guidance and do not constitute any part of an offer or contract. Intending purchasers should not rely on them as statements of representation of fact, but must satisfy themselves by inspection or otherwise as to their accuracy. No person in this firms employment has the authority to make or give any representation or warranty in respect of the property.