



Hartley Avenue, Peterborough, PE1 5FT



Two Bedrooms



63 Sqm



Family Bathroom



Set on the Connect 21 development and built by Kier Homes, this two bedroom top floor apartment is offered for sale with no onward chain.

With unobstructed views stretching across Peterborough, this enviable apartment offers open plan living, two bedrooms and a bathroom.

The apartment itself sits on the top floor of this building and is an ideal investment property, which should attract a strong rental of circa £750 to £800pcm. It's also an attractive proposition to first time buyers looking for that first step onto the housing ladder.

The kitchen and lounge are open plan and this spans approximately 25 ft. There are plenty of modern, crisp white kitchen units at both base and eye level and the room has plenty of light with doors leading out onto the balcony. There are two double bedrooms and a bathroom which contains contemporary sanitaryware.

If you would like more information on this property, please contact the office.

Measurements:

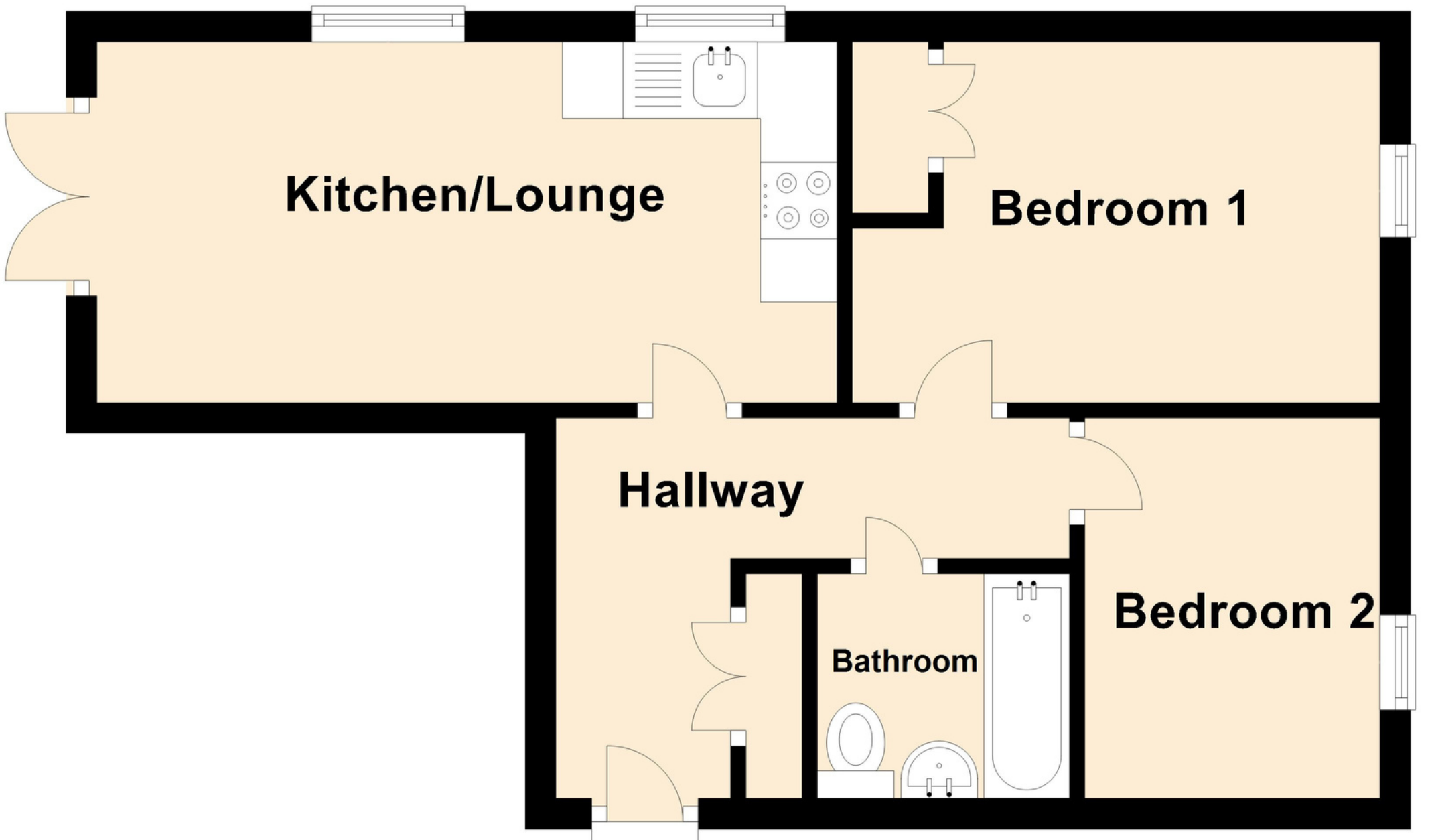
Open Plan Kitchen/Lounge - 7.87m x 3.53m (25'10 x 11'07)
Bedroom One - 3.93m x 3.55m (12'11 x 11'08)
Bedroom Two - 2.94m x 2.74m (9'08 x 9'0)

Specifications:

Tenure - Leasehold
Ground Rent -
Service Charge -
Internal Area -

Score	Energy rating	Current	Potential
92+	A		
81-91	B		
69-80	C	80 c	80 c
55-68	D		
39-54	E		
21-38	F		
1-20	G		

Ground Floor



To hear more about Hartley Avenue,
Please call 01733 893 520