

Nightingale Court, Gunthorpe, PE4 7FH



Two Bedrooms



51 sqm / 548 sqft



Family Bathroom



Tenant in situ. A ready made investment opportunity awaits you at this two bedroom terraced property at Nightingale Court, PE4.

Ideally located in Gunthorpe and offering a great opportunity for investment, the property is close to local amenities to include, shops, schools and public transport links to Peterborough City Centre.

Inside the property offers versatile living to include a lounge/diner and kitchen with access onto the private rear garden.

Upstairs you will find two good sized bedrooms, a three piece family bathroom suite and storage cupboard.

To hear more about this property or to arrange your viewing please call us today.

Measurements:

Lounge - 4.57m x 3.44m / 14'11" x 11'3"

Kitchen - 2.48m x 3.44m / 8'2" x 11'3"

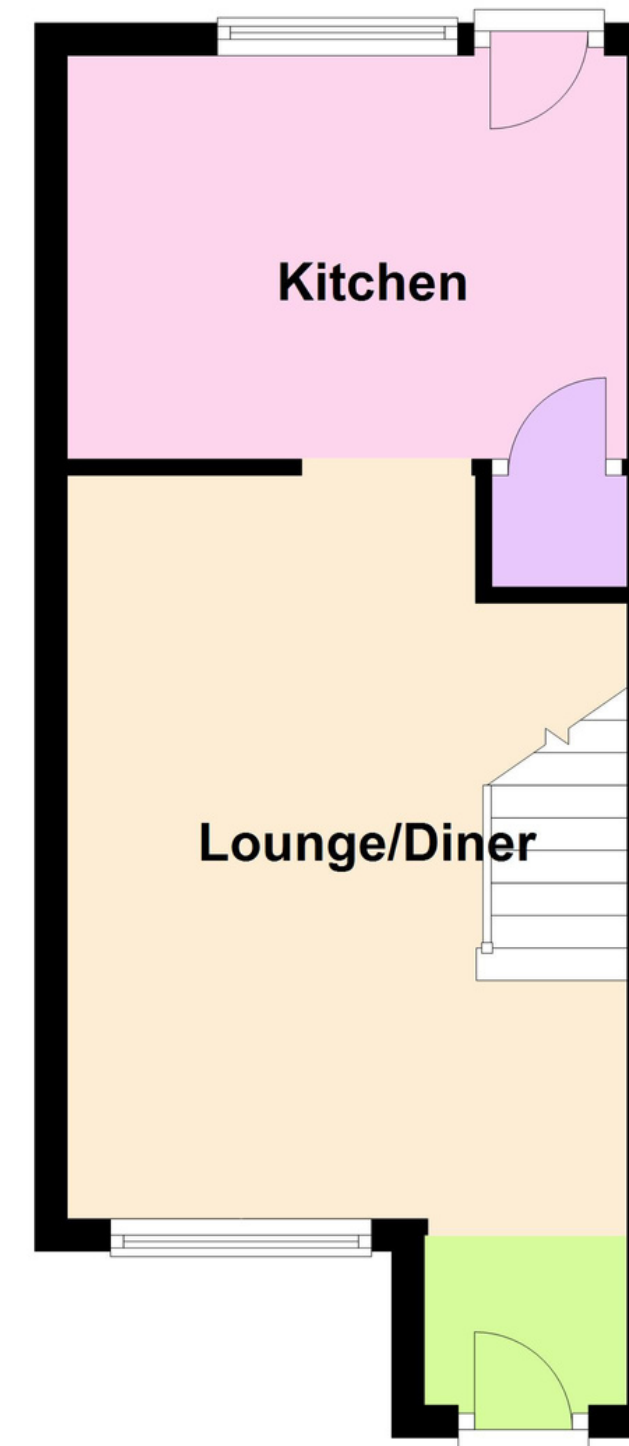
Bedroom One - 2.85m x 3.44m / 9'4" x 11'3"

Bedroom Two - 1.98m x 3.44m / 6'6" x 11'3"

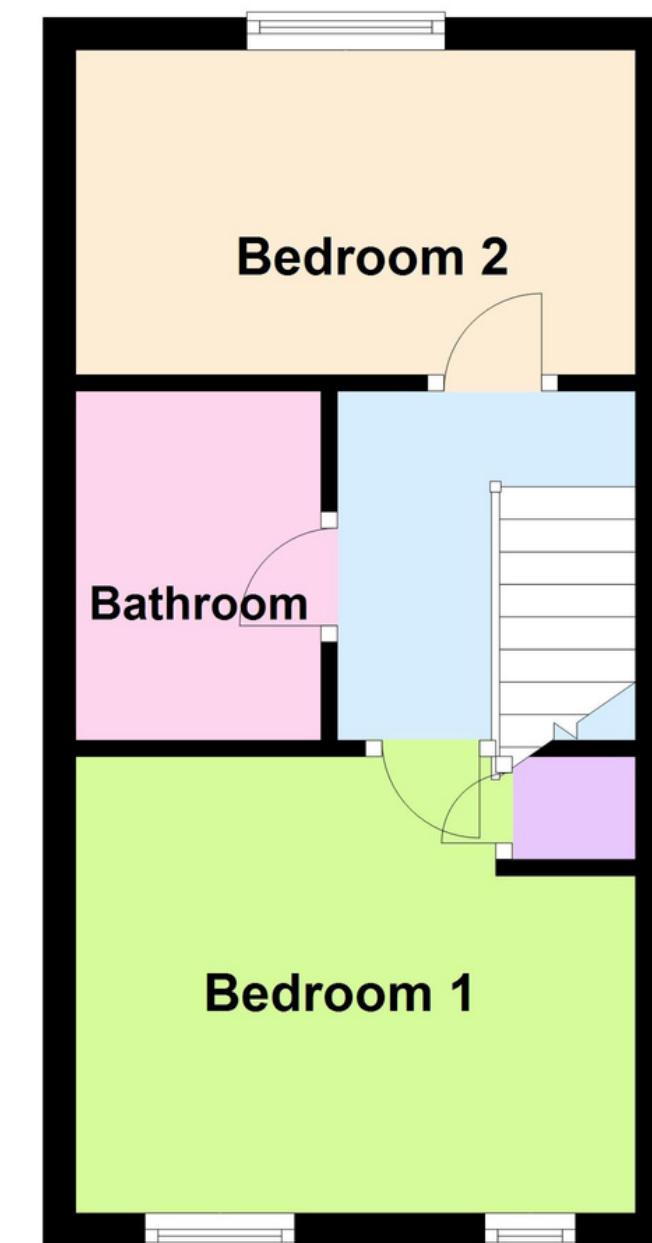
Bathroom - 2.15m x 1.51m / 7'1" x 4'11"

- Tenant in Situ
- Ready made investment opportunity
- Two bedroom home
- Off road parking
- Private rear garden

Ground Floor



First Floor



Score	Energy rating	Current	Potential
92+	A		
81-91	B		91 B
69-80	C		
55-68	D	65 D	
39-54	E		
21-38	F		
1-20	G		

To hear more about Nightingale Court
Please call 01733 893 520