

Martin Luther King Close PE29 1PF



Three Bedrooms



94 sqm / 1011 sqft



Family Bathroom &
Downstairs Shower Room



Investment Opportunity - Tenant in Situ

Are you ready to expand or begin your property portfolio? This ready made investment opportunity awaits you at Martin Luther King Close.

Upon entrance is spacious hallway leading to the office of which leads through to the good sized lounge and downstairs WC shower room. French doors lead from the lounge to the rear garden of which is low maintenance. Upstairs is home to three bedrooms two of which are double with a further good sized single room. The kitchen / diner is on the first floor and has been fitted with neutral units. The family bathroom has been fitted with modern sanitaryware comprising of a three piece suite with shower fitted over the bath.

The home has been neutrally decorated throughout and the tenant in situ currently would like to remain in the property for the foreseeable. This property is achieving £795 PCM

Measurements:

Entrance Hall - 1.86m x 5.28m / 6'1" x 17'3"

Study - 3.36m x 1.86m / 11'0" x 6'1"

Lounge - 7.06m x 2.79m (max) / 23'2" x 9'2"

Downstairs Shower Room - 0.86m x 2.09m / 2'9" x 6'10"

Kitchen / Diner - 3.81m x 2.99m / 12'6" x 9'9"

Bathroom - 2.15m x 1.89m / 7'0" x 6'2"

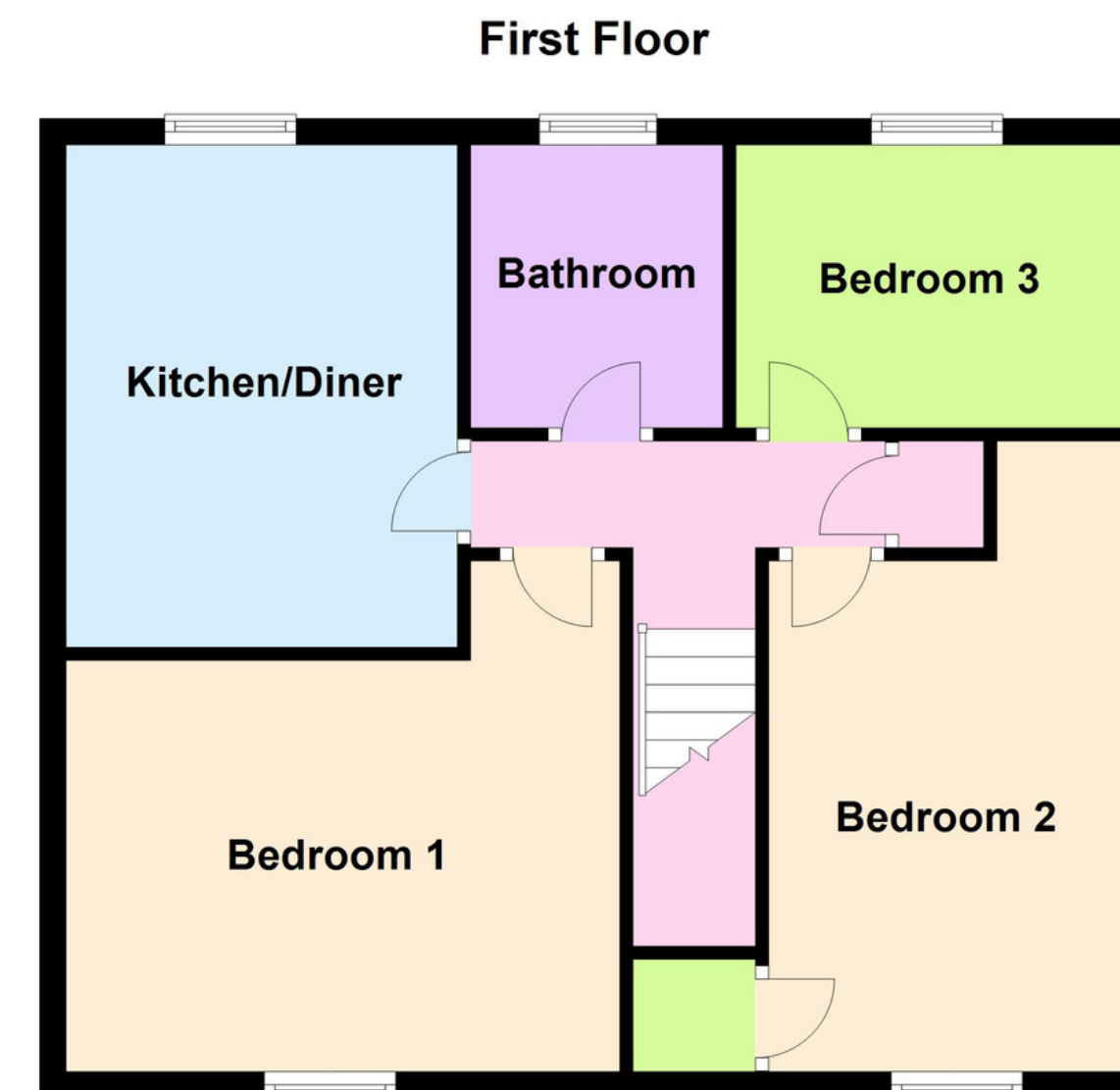
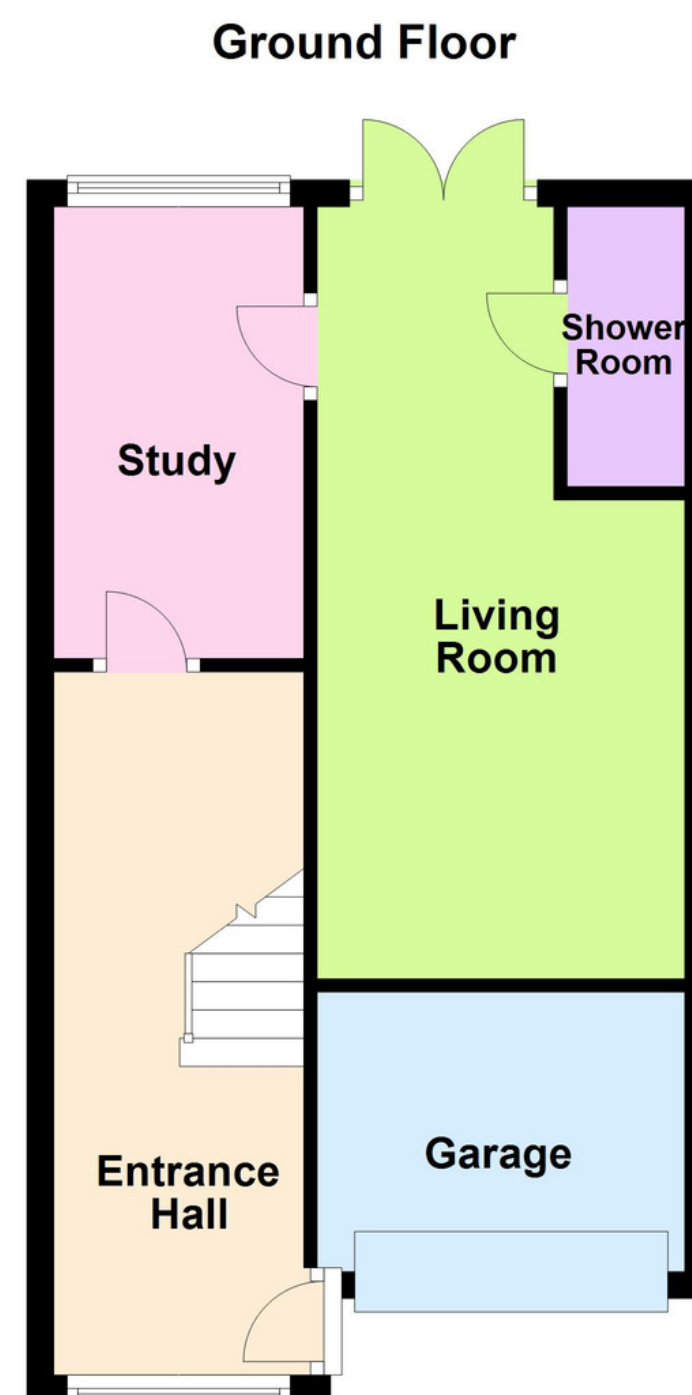
Bedroom One - 4.84m x 3.12m / 15'10" x 10'0"

Bedroom Two - 3.85m x 2.98m / 12'7" x 9'9"

Bedroom Three - 2.99m x 2.41m / 9'9" x 7'10"

- Tenant-in Situ
- Ready Made Investment
- Three Bedroom Home
- Two Double Bedrooms
- Downstairs Shower Room
- Neutrally Decorated Throughout

To hear more about Martin Luther King Close,
Please call 01733 893 520



Score	Energy rating	Current	Potential
92+	A		
81-91	B		90 B
69-80	C	78 C	
55-68	D		
39-54	E		
21-38	F		
1-20	G		