



Office 9, Jubilee Business Centre Kingsbury Road, London, NW9

160 Sq Ft

£500 Per Month

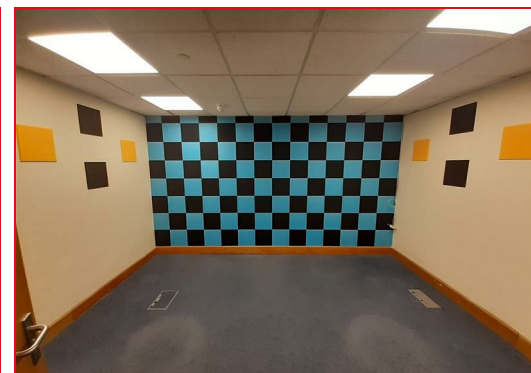
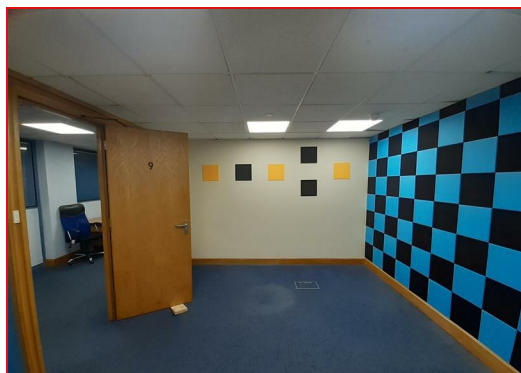
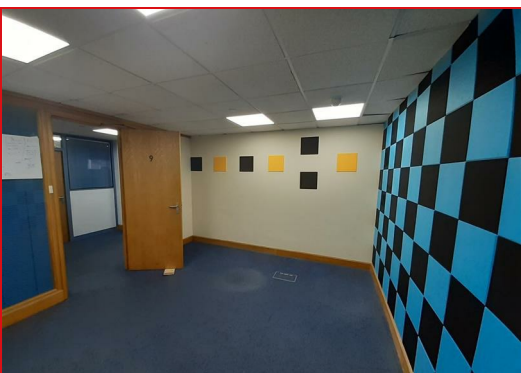
Benjamin Stevens are pleased to offer this uniquely newly refurbished serviced office to rent. Located on the popular and central Kingsbury Road.

This particular office is 160 Sq Ft and is offered for £500 per month.

All offices have access to modern shared kitchens and bathrooms. Bills are included (apart from phones and internet).

Parking is also available upon request.

We have limited offices left, so if you are interested please call us as soon as possible on 020 8958 1118.



GROUND FLOOR
160 sq.ft. (14.8 sq.m.) approx.



TOTAL FLOOR AREA: 160 sq ft. (14.8 sq.m.) approx.
While every attempt has been made to ensure the accuracy of the floorplan contained here, measurements of doors, windows, rooms and any other items are approximate and no responsibility is taken for any error or omission in this statement. This plan is for illustrative purposes only and should be used as such by any prospective purchaser. The services, systems and appliances shown have not been tested and no guarantee as to their operation or efficiency can be given.
Made with Metreplan 02/02

Edgware Office- 194 Station Road, Edgware, HA8 7AT. Tel: 020 8958 1118
Bushey Heath Office- 59 High Road, Bushey, WD23 1EE. Tel: 020 8950 7777
www.benjaminstevens.co.uk

