



**71 Halfway Avenue, Luton, LU4 8RA**

**Asking Price £600,000**

A fantastic opportunity to purchase a rarely available, truly unique seven bedroom detached house. With off-street parking for four cars and double storey extensions to the side and rear, this optimises living space ensuring enough room for families of all sizes.

The ground floor comprises of a large open plan lounge/dining area whilst including an alternative family room for either entertaining or added comfort. The extended kitchen benefits from built in appliances, side and rear access into the rear garden. Two bedrooms, both with en-suites/wet rooms can also be found on the ground floor.

The first floor boasts a total of three double and two further single bedrooms with two bathrooms. The property allows for huge potential for further extension converting the loft into additional living space/bedrooms.

The location of this property is ideal as it is located a short walk away from a range of schools, local amenities and has multiple great transport links to the A5 and M1.



### Exterior



Ample off street parking, side access through to rear garden

### Reception



Wood effect flooring, double doors leading to rear garden

### Reception alternate view



### Kitchen

Range of wall and base units, double bowl stainless steel sink with drainer board and mixer tap, five ring gas cooker, plumbed for washing machine, tiled flooring, doors to side access and through to rear garden

### Kitchen alternate view



### Kitchen alternate view



### Family room



Wood effect flooring, porthole windows to side aspect and bay window to front aspect

### Family room alternate view



### Bedroom one



Laid to carpet, bay window to front aspect



### En-suite



Panelled bath with shower attachment and mixer tap, wall attached pedestal sink with mixer tap, low level W/C, heated towel rail, frosted window to front aspect and fully tiled

### Bedroom two



Tiled floor, window to front aspect

### En-suite wet room

Shower, wall attached sink with mixer taps, low level W/C, fully tiled

### Bedroom three



Laid to carpet, window to rear aspect

### En-suite



Corner shower, wall attached pedestal sink with mixer tap, low level W/C, heated towel rail, fully tiled

### Bedroom four



Wood effect flooring, built in wardrobe, window to rear aspect

### Bedroom five

Laid to carpet window to rear aspect

### Bedroom six



Wood effect flooring, window to rear aspect

### Bedroom seven



Wood effect flooring, window to front aspect

### Family bathroom



Panelled bath with shower attachment and mixer tap, wall attached pedestal sink with mixer tap, low level W/C, heated towel rail, frosted window to side aspect and fully tiled

## Outbuilding



## Outbuilding internal



Marble effect flooring, windows to front aspect

## Storage



Lockable storage cupboard

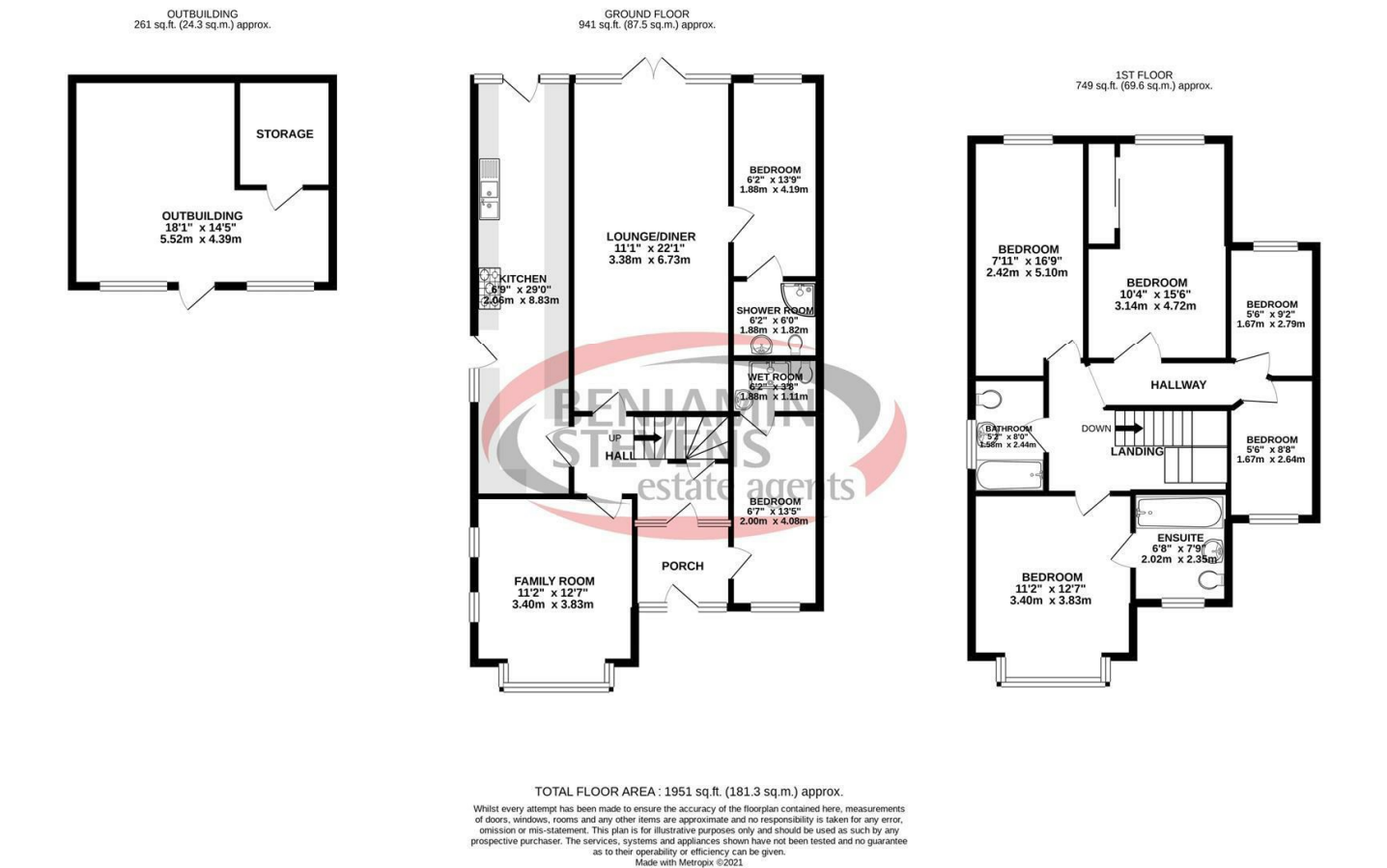
## Rear aspect



Patio area, mainly laid to lawn



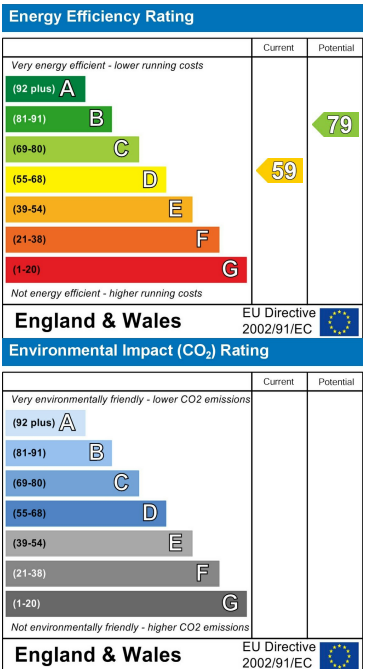
Floor Plan



Area Map



Energy Efficiency Graph



These particulars, whilst believed to be accurate are set out as a general outline only for guidance and do not constitute any part of an offer or contract. Intending purchasers should not rely on them as statements of representation of fact, but must satisfy themselves by inspection or otherwise as to their accuracy. No person in this firms employment has the authority to make or give any representation or warranty in respect of the property.



Edgware Office- 194 Station Road, Edgware, HA8 7AT. Tel: 020 8958 1118  
Bushey Heath Office- 59 High Road, Bushey, WD23 1EE. Tel: 020 8950 7777  
[www.benjaminstevens.co.uk](http://www.benjaminstevens.co.uk)