



Richfield Road, Bushey WD23 4RR

Offers In Excess Of £850,000

A beautifully presented THREE BEDROOM, TWO BATHROOM DETACHED BUNGALOW with garage and own drive. Other benefits include reception room, stunning kitchen/diner, study, family bathroom, spacious entrance hall, en-suite bathroom to master bedroom, rear garden with panoramic views. Richfield Road is situated within a five minute walk to all local shopping/transport facilities and places of worship.

NO UPPER CHAIN

Richfield Road, Bushey WD23 4RR

Exterior:



Porch:

Double glazed door to front entrance to porch.

Entrance Hall:

Door to hall, stairs to master bedroom, radiator, wood floor.

Hallway:

Wood stairs to first floor.

Bathroom:



Double glazed window to side, glazed walk in shower, vanity hand wash basin with storage under, low level WC, extractor fan, tiled walls and floor.

Kitchen/Breakfast Room:



Double glazed window to rear, range of wall and base units, breakfast island, granite work tops, five ring gas hob with extractor over, built in electric double oven, built in microwave, american style fridge freezer, integrated dishwasher, integrated washing machine and tumble dryer, tiled walls and floor door to conservatory.

Lounge:



Double glazed french patio doors, double glazed windows to side of patio doors, feature fireplace, built in cabinets, radiator, wood floor.

Conservatory:

Double glazed windows to side and rear, radiator, tile floor, door to guest cloakroom.

Guest Cloakroom:

Double glazed window to front, low level WC, vanity hand wash basin, fully tiled walls and floor.

Richfield Road, Bushey WD23 4RR

Bedroom Two:



Double glazed window to front, built in wardrobes, matching dressing table, radiator, carpet.

Study:

Double glazed window to front, radiator, carpet.

Bedroom Three:



Double glazed window to side, fitted wardrobes and matching dressing table, radiator, carpet.

Master Bedroom:



Double glazed window to front and rear, built in wardrobes and

range of fitted eave storage cupboards, radiator, carpet, door to en-suite.

En-suite:



Double glazed window to side, panel enclosed bath, glazed enclosed shower, vanity hand wash basin with storage under, low level WC, tiled walls and floor.

Garden:



Large patio area leading to lawn with plant and shrub borders lower patio and side access.

Garden:



Richfield Road, Bushey WD23 4RR

Garden:



Garage/Parking:

Up and over garage door, space for cars on driveway.

Disclaimer:

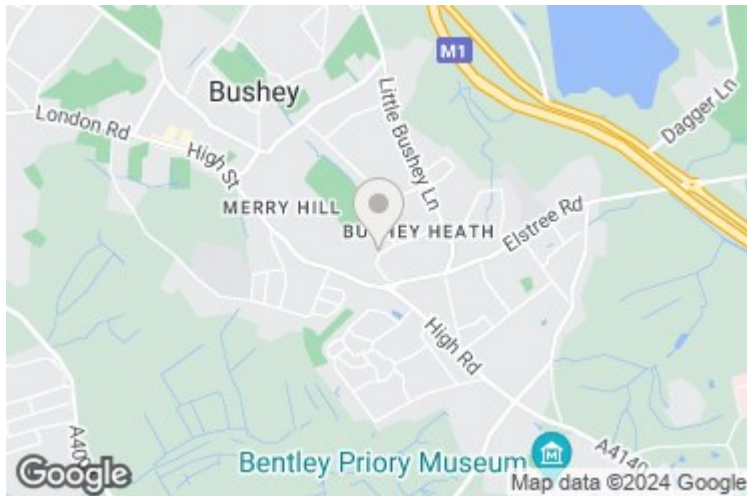
Whilst every care and effort has been made to ensure these details are correct their accuracy cannot be guaranteed and so should not form part of any contract.

Tenure:

This is a freehold property.

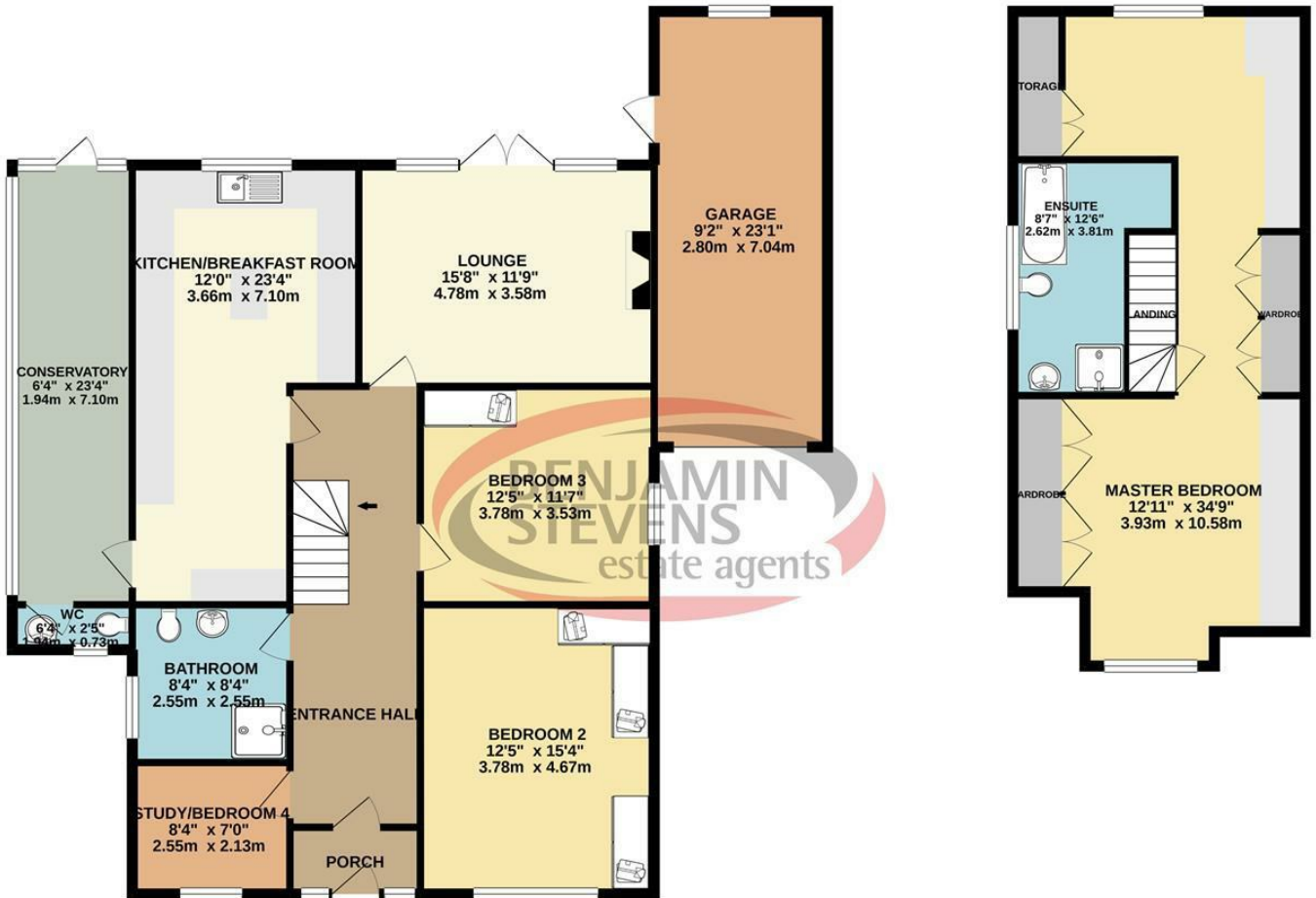
Council Tax Band E which is currently £2,537 per annum.

As always buyers are advised to gain verification from their surveyor/solicitor during the conveyancing process.



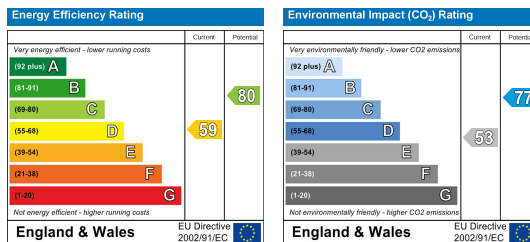
GROUND FLOOR
1445 sq. ft. (134.3 sq. m.) approx.

1ST FLOOR
514 sq. ft. (47.8 sq. m.) approx.



TOTAL FLOOR AREA : 1959 sq. ft. (182.0 sq. m.) approx.

Whilst every attempt has been made to ensure the accuracy of the floorplan contained here, measurements of doors, windows, rooms and any other items are approximate and no responsibility is taken for any error, omission or mis-statement. This plan is for illustrative purposes only and should be used as such by any prospective purchaser. The services, systems and appliances shown have not been tested and no guarantee as to their operability or efficiency can be given.
Made with Metropix ©2020



Edgware Office- 194 Station Road, Edgware, HA8 7AT. Tel: 020 8958 1118
 Bushey Heath Office- 59 High Road, Bushey, WD23 1EE. Tel: 020 8950 7777
www.benjaminstevens.co.uk