



Rosebery Road, Bushey WD23 1DA

Asking Price £459,950

A beautifully presented TWO DOUBLE BEDROOM TWO BATHROOM HOUSE situated in a sought after residential road off School Lane conveniently located and within walking distance to all local shopping and transport facilities. The property is being offered in good decorative order and benefits from: Double Glazed Windows, Gas Fired Heating To Radiators, Guest Shower Room, Through Lounge/Dining Room With Log Burner Fireplace, Fully Fitted Kitchen, Utility Room, Bedroom One With En Suite Bathroom, Bedroom Two, Rear Garden.

Rosebery Road, Bushey WD23 1DA

Exterior:



Lounge/Dining Room:



Lounge/Dining Room:



Lounge/Dining Room:



Lounge/Dining Room:



Kitchen:



Rosebery Road, Bushey WD23 1DA

Kitchen:



Bedroom One:



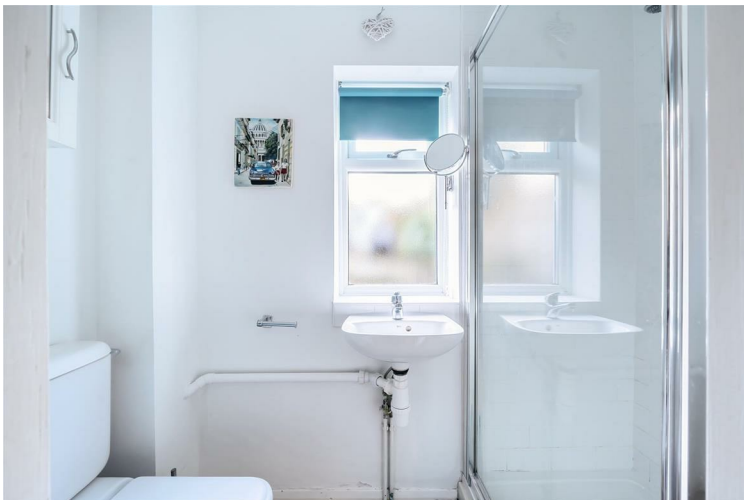
Utility Room:



Bedroom One:



Guest Shower Room:



En Suite Bathroom:



Rosebery Road, Bushey WD23 1DA

Bedroom Two:



Garden:



Garden:



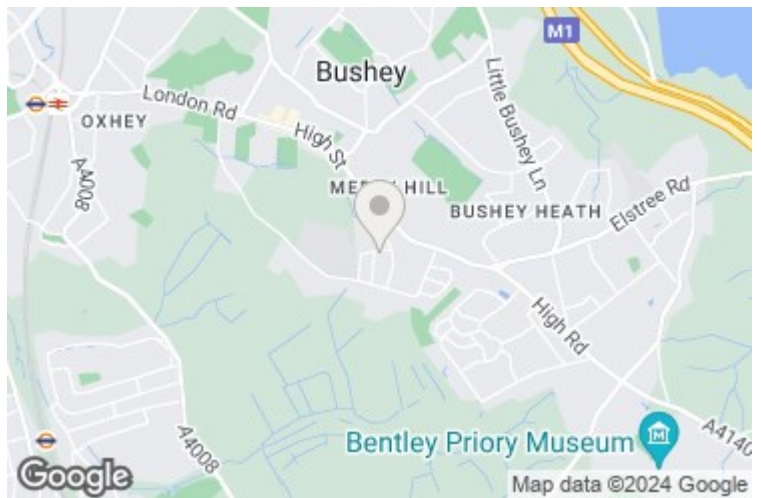
Tenure:

This is a freehold property.
Council Tax Band D which is currently £2,076 per annum.
As always buyers are advised to gain verification from their surveyor/solicitor during the conveyancing process.

Disclaimer:

While every care and effort has been made to ensure these details are correct their accuracy cannot be guaranteed and so should not form part of any contract.

Garden:

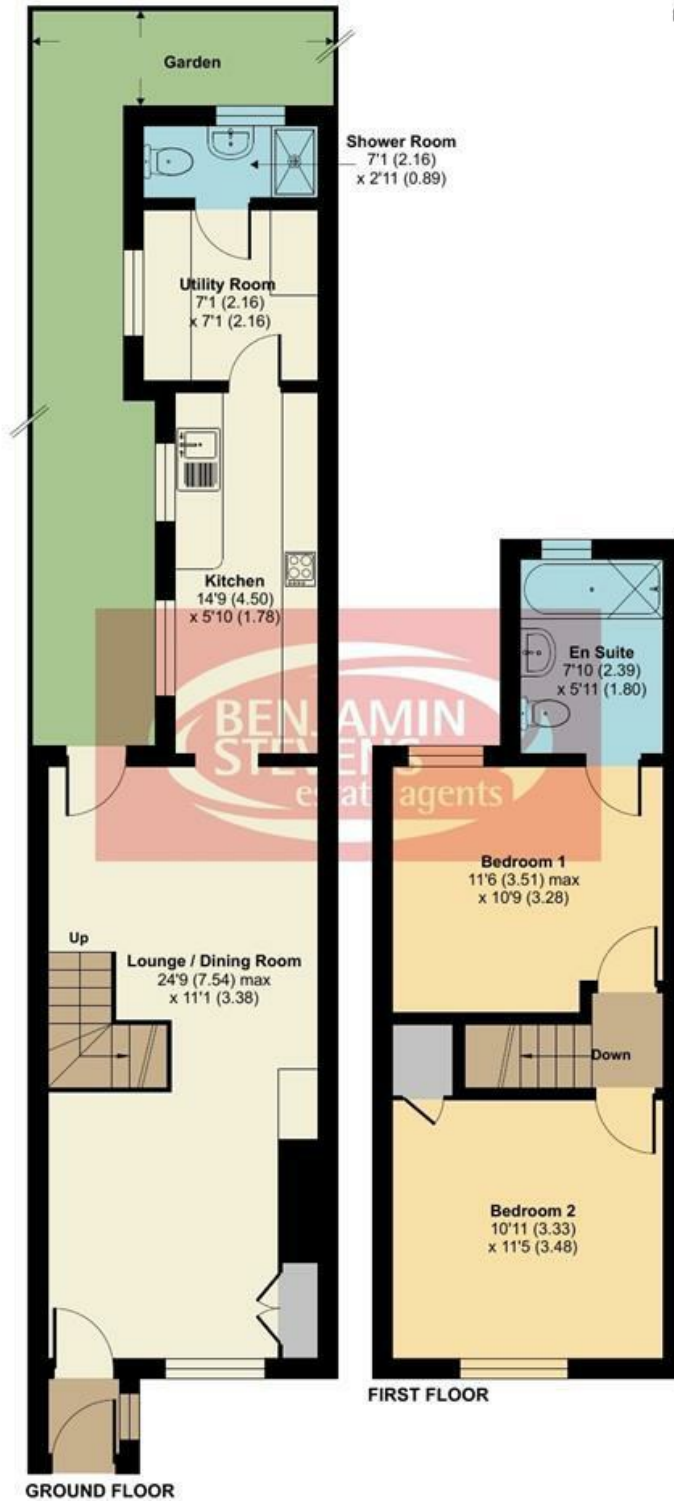




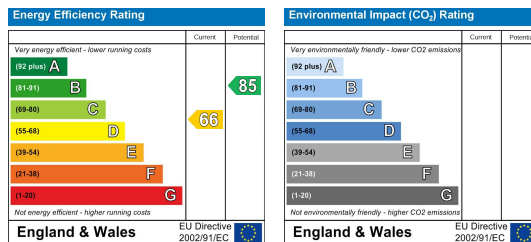
Rosebery Road, Bushey, WD23

Approximate Area = 802 sq ft / 74.5 sq m

For identification only - Not to scale



Floor plan produced in accordance with RICS Property Measurement Standards incorporating International Property Measurement Standards (IPMS2 Residential). © nichecom 2024. Produced for Benjamin Stevens. REF: 1076166



Edgware Office- 194 Station Road, Edgware, HA8 7AT. Tel: 020 8958 1118
 Bushey Heath Office- 59 High Road, Bushey, WD23 1EE. Tel: 020 8950 7777
www.benjaminstevens.co.uk