



Steeplands, Bushey WD23 1BT

Asking Price £339,950

A spacious TWO DOUBLE BEDROOM, FIRST FLOOR APARTMENT forming part of this popular purpose built development conveniently located and within walking distance to all local shopping and transport facilities. The property is being offered in good decorative order and benefits from: Security Entryphone System, Double Glazed Windows, Gas Fired Heating To Radiators, Reception Room With Access To Balcony, Kitchen, Two Double Bedrooms, Bathroom, Communal Grounds, Single Garage, Allocated Parking,
LEASEHOLD/SHARE OF FREEHOLD
NO UPPER CHAIN

Steeplands, Bushey WD23 1BT

Exterior:



Reception Room:



Entrance Hall:



Kitchen:



Reception Room:



Kitchen:



Steeplands, Bushey WD23 1BT

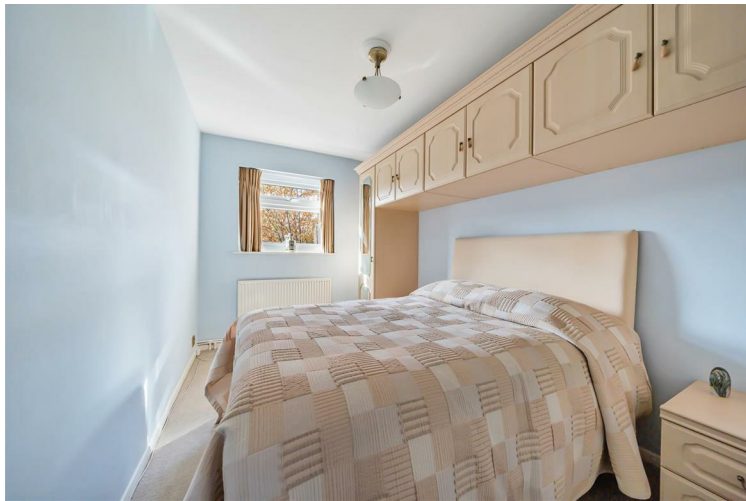
Bedroom One:



Balcony:



Bedroom Two:



Communal Grounds:



Bathroom:



Communal Grounds:



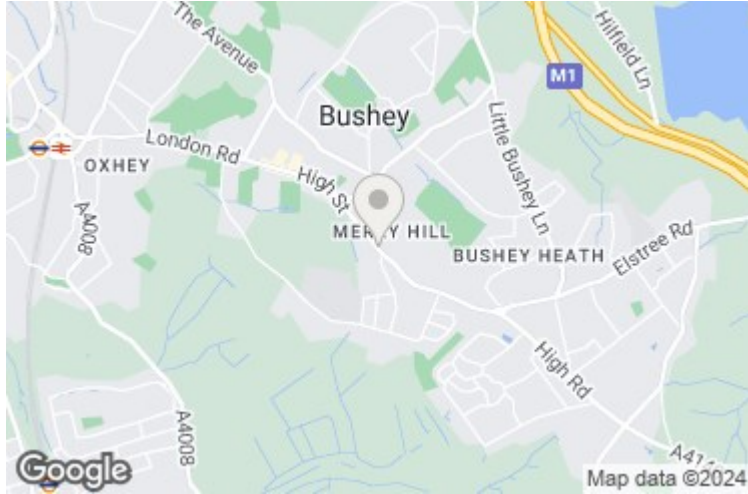
Tenure:

To the best of their knowledge the seller advises us that there are approximately 960 year remaining on the lease years with an annual service charge and ground rent of approximately £306 PQ. As always buyers are advised to gain verification from their surveyor/ solicitor during the conveyancing process. Council Tax Band D - £2044 PA

Disclaimer:

Steeplands, Bushey WD23 1BT

While every care and effort has been made to ensure these details are correct their accuracy cannot be guaranteed and so should not form part of any contract.



Hogarth Court, Steeplands, Bushey, WD23

Approximate Area = 697 sq ft / 64.8 sq m

Garage = 126 sq ft / 11.7 sq m

Total = 823 sq ft / 76.5 sq m

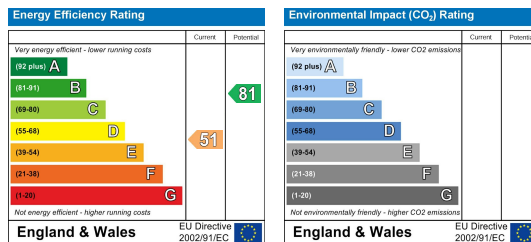
For identification only - Not to scale



FIRST FLOOR



Floor plan produced in accordance with RICS Property Measurement Standards incorporating International Property Measurement Standards (IPMS2 Residential). © ntxchem 2023. Produced for Benjamin Stevens . REF: 1051795



Edgware Office- 194 Station Road, Edgware, HA8 7AT. Tel: 020 8958 1118
 Bushey Heath Office- 59 High Road, Bushey, WD23 1EE. Tel: 020 8950 7777
www.benjaminstevens.co.uk