



## 228 Station Road, Edgware, HA8 7AU

**£42,000 Per Annum**

FULLY FITTED TURKISH STYLE RESTAURANT WITH 2 FOUR BED FLATS ABOVE IN EDGWARE PRIME LOCATION

Fantastic opportunity to own this prime location restaurant and take away business.

Fully fitted to a high standard with charcoal grill at the front with two kebab machines and 5 metre display fridge. Seating for up to 50 people with large prep area and large cold room. 2 parking spaces to the rear. Full CCTV with awning and glass frontage.

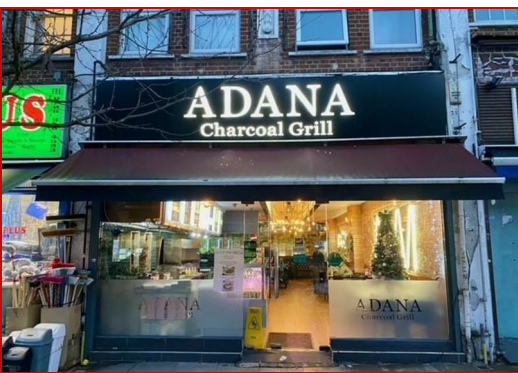
Two 4 bed flats above fully tenanted with own rear access.

Located in the centre of Edgware (Station Road) with rear access.

Restaurant and Service area- 830 sqft

Kitchen and prep area/cold room - 300 sqft

Premium POA





**Edgware Office- 194 Station Road, Edgware, HA8 7AT. Tel: 020 8958 1118**  
**Bushey Heath Office- 59 High Road, Bushey, WD23 1EE. Tel: 020 8950 7777**  
**[www.benjaminstevens.co.uk](http://www.benjaminstevens.co.uk)**