



Coldharbour Lane, Bushey WD23 4NS

Offers In Excess Of £550,000

A beautifully presented THREE BEDROOM SEMI DETACHED HOUSE situated on a popular residential road conveniently located for all local shopping and transport facilities and within walking distance to King George Park. The property is being offered in good decorative order and benefits from: Replacement Double Glazed Windows, Gas Fired Heating To Radiators, Guest Cloakroom, Lounge/Dining Room, Fully Fitted Modern Open Plan Kitchen, Three Bedrooms, Bathroom, Rear Garden, Off Street Parking.

Coldharbour Lane, Bushey WD23 4NS

Exterior:



Lounge/Dining Room:



Lounge/Dining Room:



Open Plan Kitchen:



Lounge/Dining Room:



Open Plan Kitchen:



Coldharbour Lane, Bushey WD23 4NS

Bedroom One:



Bathroom:



Bedroom Two:



Rear Garden:



Bedroom Three:



Rear Garden:



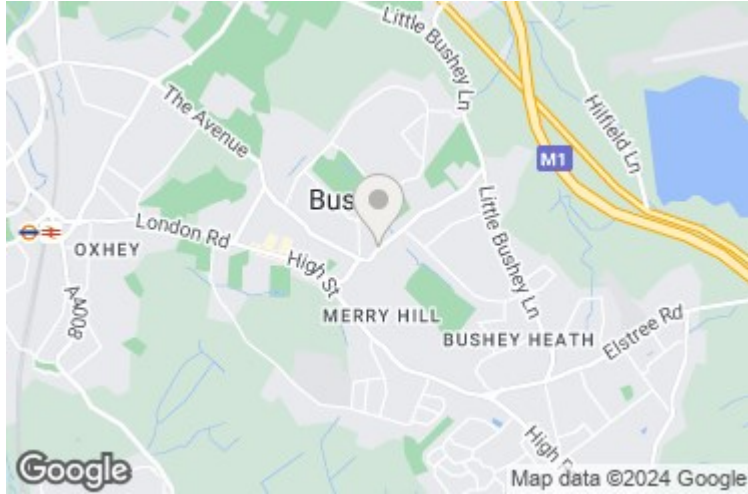
Tenure:

This is a freehold property.
Council Tax Band E which is currently £2,537 per annum.
As always buyers are advised to gain verification from their surveyor/solicitor during the conveyancing process.

Disclaimer:

Coldharbour Lane, Bushey WD23 4NS

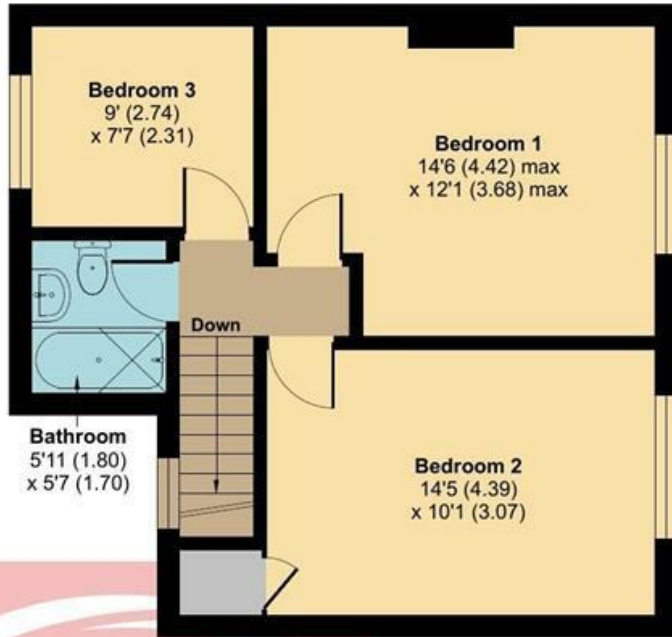
While every care and effort has been made to ensure these details are correct their accuracy cannot be guaranteed and so should not form part of any contract.



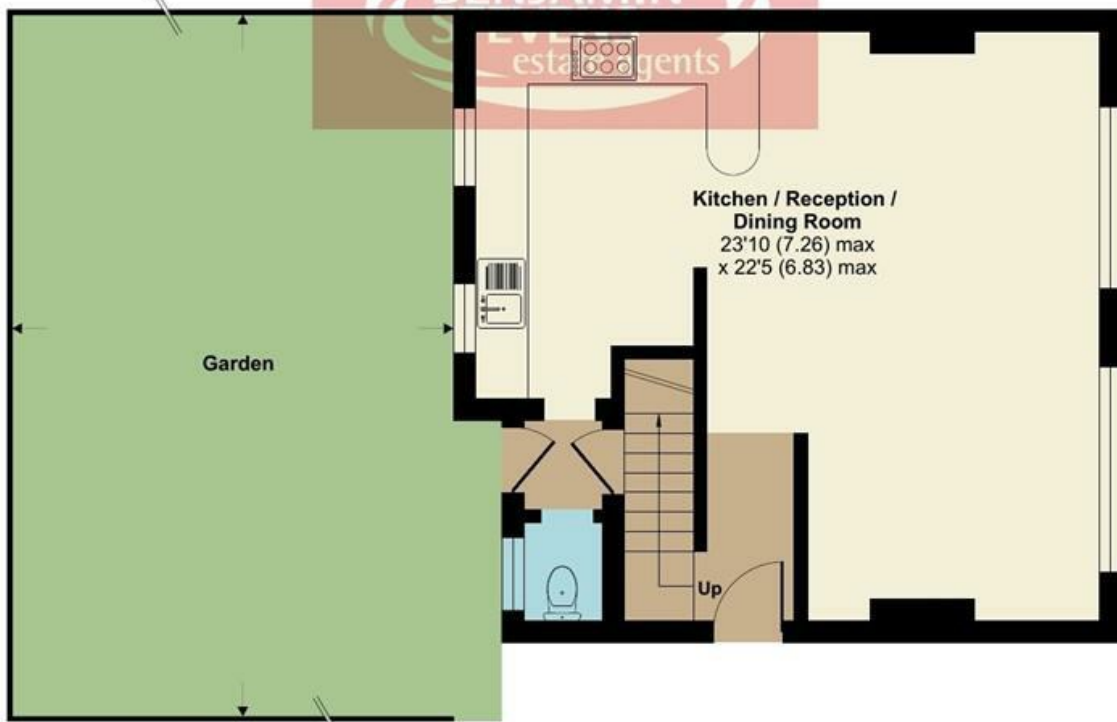
Coldharbour Lane, Bushey, WD23

Approximate Area = 1009 sq ft / 93.7 sq m

For identification only - Not to scale



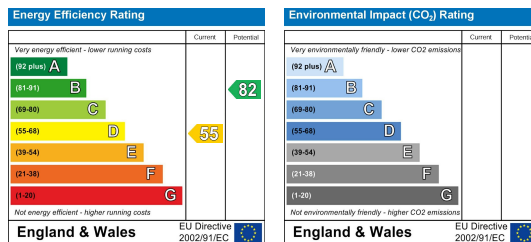
FIRST FLOOR



GROUND FLOOR



Floor plan produced in accordance with RICS Property Measurement Standards incorporating International Property Measurement Standards (IPMS2 Residential). © nichecom 2024. Produced for Benjamin Stevens. REF: 1088184



Edware Office- 194 Station Road, Edware, HA8 7AT. Tel: 020 8958 1118
 Bushey Heath Office- 59 High Road, Bushey, WD23 1EE. Tel: 020 8950 7777
www.benjaminstevens.co.uk