



Wendover Way, Bushey WD23 4QD

Offers In Excess Of £799,950

A FOUR BEDROOM, TWO RECEPTION ROOM DETACHED FAMILY HOME situated in a sought after residential close off Chiltern Avenue conveniently located for all local shopping and transport facilities and within walking distance to King George Park. The property is being offered in good decorative order and benefits from: Replacement Double Glazed Windows, Gas Fired Heating To Radiators, Guest Cloakroom, Family Room, Through Lounge/Dining Room, Fully Fitted Kitchen/Breakfast Room, Four Bedrooms, Shower Room, Rear Garden, Off Street Parking.

Wendover Way, Bushey WD23 4QD

Exterior:



Lounge/Dining Room



Entrance Hall:



Lounge/Dining Room:



Lounge/Dining Room:



Family Room:



Wendover Way, Bushey WD23 4QD

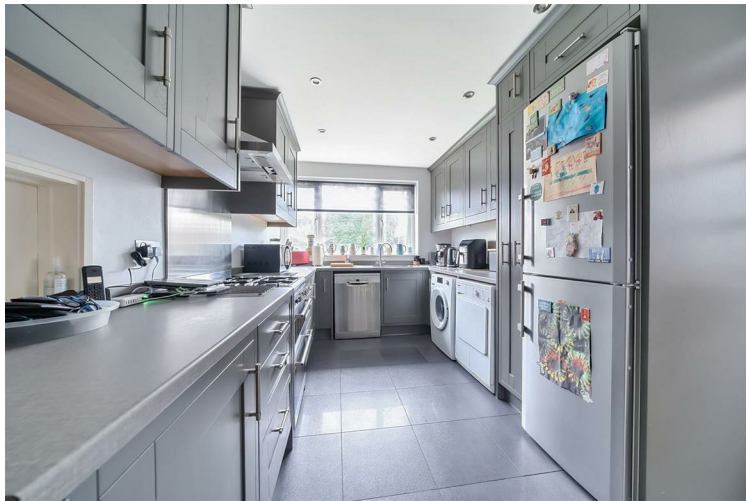
Kitchen/Breakfast Room:



Bedroom Two:



Kitchen/Breakfast Room:



Bedroom Three:



Bedroom One:



Bedroom Four:



Wendover Way, Bushey WD23 4QD

Garden:



Tenure:

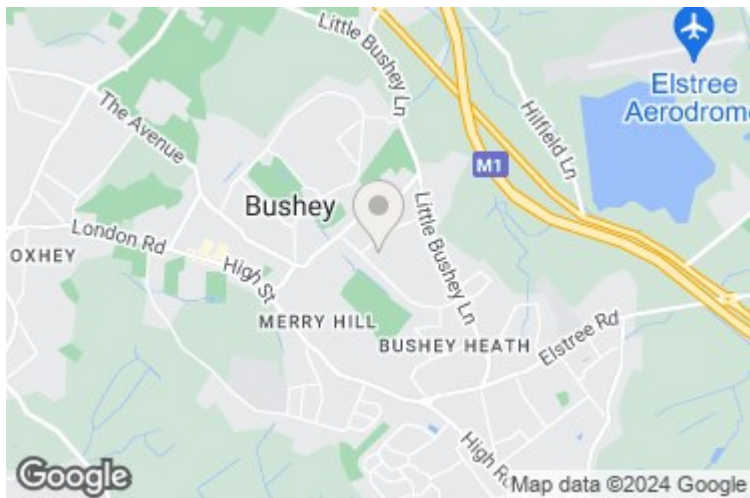
This is a freehold property.

Council Tax Band G which is currently £3,460 per annum.

As always buyers are advised to gain verification from their surveyor/solicitor during the conveyancing process.

Disclaimer:

While every care and effort has been made to ensure these details are correct their accuracy cannot be guaranteed and so should not form part of any contract.



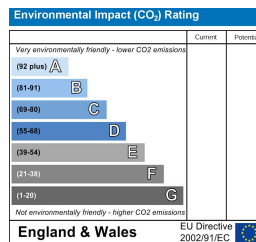
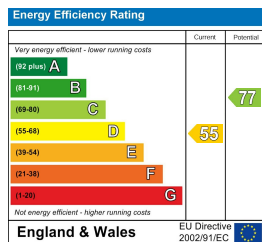
Wendover Way, Bushey, WD23

Approximate Area = 1299 sq ft / 120.6 sq m (excludes store)

For identification only - Not to scale



Floor plan produced in accordance with RICS Property Measurement Standards incorporating International Property Measurement Standards (IPMS2 Residential). © ncheom 2024. Produced for Benjamin Stevens . REF: 1083794



Edgware Office- 194 Station Road, Edgware, HA8 7AT. Tel: 020 8958 1118
 Bushey Heath Office- 59 High Road, Bushey, WD23 1EE. Tel: 020 8950 7777
www.benjaminstevens.co.uk