



Woburn Close, Bushey WD23 4XA

Asking Price £899,950

An extended bright and spacious FOUR BEDROOM, THREE RECEPTION ROOM DETACHED FAMILY HOME situated in sought after residential close in the heart of Bushey, conveniently located for all local shopping and transport facilities. The property is in need of some modernisation and benefits from: Double Glazed Windows, Gas Fired Heating To Radiators, Guest Cloakroom, Lounge, Dining Room, Family Room, Fully Fitted Kitchen/Breakfast Room, Utility Room, Bedroom One With En Suite Dressing Room, Three Further Bedrooms, Family Bathroom, Separate WC, Secluded Rear, Single Garage Approached Via Own Driveway With Off Street Parking. THE PROPERTY HAS POTENTIAL FOR FURTHER EXTENSION STPP

Woburn Close, Bushey WD23 4XA

Exterior:



Lounge:



Guest Cloakroom:



Dining Room:



Family Room:



Kitchen/Breakfast Room:



Woburn Close, Bushey WD23 4XA

Kitchen/Breakfast Room:



En Suite Dressing Room:



Utility Room:



Bedroom Two:



Bedroom One:



Bedroom Three:



Woburn Close, Bushey WD23 4XA

Bedroom Four:



Rear Garden:



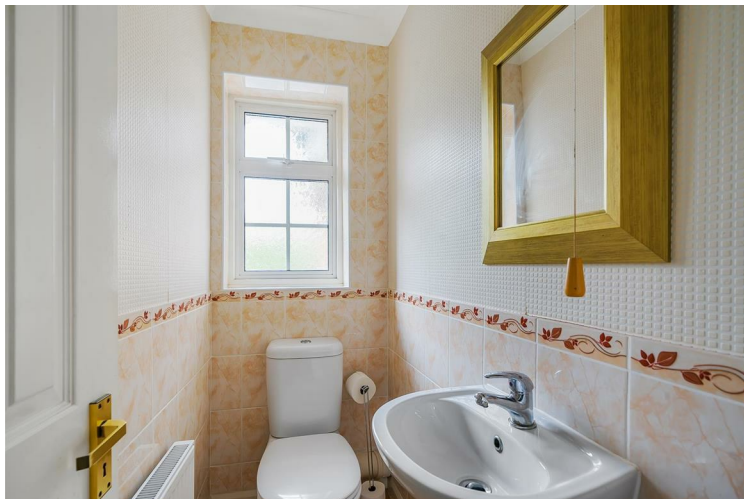
Bathroom:



Rear Garden:



Separate WC:



Rear Garden:



Woburn Close, Bushey WD23 4XA

Exterior Rear:



Tenure:

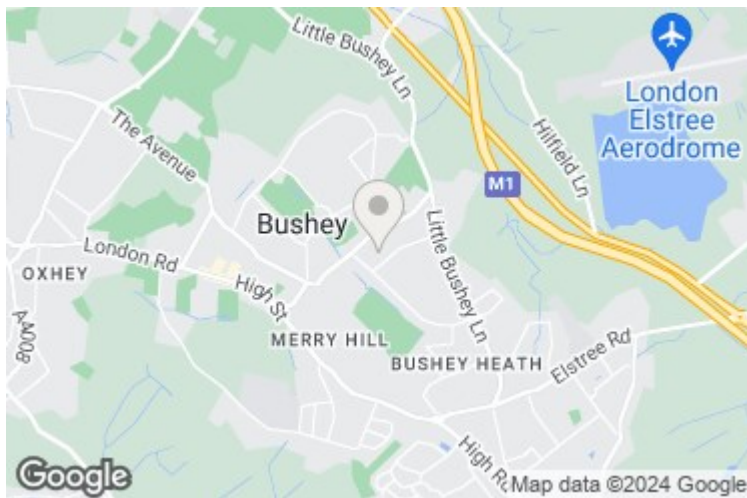
This is a freehold property.

Council Tax Band G £3,632 per annum.

As always buyers are advised to gain verification from their surveyor/solicitor during the conveyancing process.

Disclaimer:

While every care and effort has been made to ensure these details are correct their accuracy cannot be guaranteed and so should not form part of any contract.



Woburn Close, Bushey, WD23

Approximate Area = 1831 sq ft / 170.1 sq m

Garage = 151 sq ft / 14 sq m

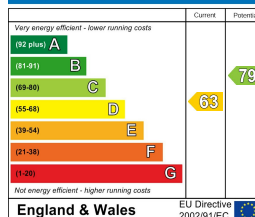
Total = 1982 sq ft / 184.1 sq m

For identification only - Not to scale



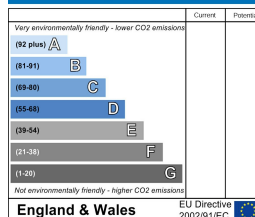
Floor plan produced in accordance with RICS Property Measurement Standards incorporating International Property Measurement Standards (IPMS2 Residential). © nichecom 2024. Produced for Benjamin Stevens. REF: 1122634

Energy Efficiency Rating



England & Wales EU Directive 2002/91/EC

Environmental Impact (CO₂) Rating



England & Wales EU Directive 2002/91/EC



Edgware Office- 194 Station Road, Edgware, HA8 7AT. Tel: 020 8958 1118
 Bushey Heath Office- 59 High Road, Bushey, WD23 1EE. Tel: 020 8950 7777
www.benjaminstevens.co.uk