

## **Howton Place, Bushey Heath, Bushey, Hertfordshire WD23 1HX**

**Asking Price £369,950**

A bright and spacious TWO DOUBLE BEDROOM FIRST FLOOR APARTMENT forming part of this sought after development in the heart of Bushey Heath, conveniently located and within walking distance to all local shopping and transport facilities. The property is being offered in good decorative order and benefits from: Security Entryphone System, Double Glazed Windows, Gas Fired Heating To Radiators, Reception Room, Fully Fitted Kitchen, Two Double Bedrooms, Bathroom, Separate WC, Communal

Grounds, Garage.  
SHARE OF FREEHOLD  
NO UPPER CHAIN



# Howton Place, Bushey Heath, Bushey, Hertfordshire WD23 1HX

**Exterior:**



**Reception Room:**



**Reception Room:**



**Kitchen:**



**Reception Room:**



**Kitchen:**





# Howton Place, Bushey Heath, Bushey, Hertfordshire WD23 1HX

## Bedroom One:



## Separate WC:



## Bedroom Two:



## Tenure:

This is a share of freehold property.

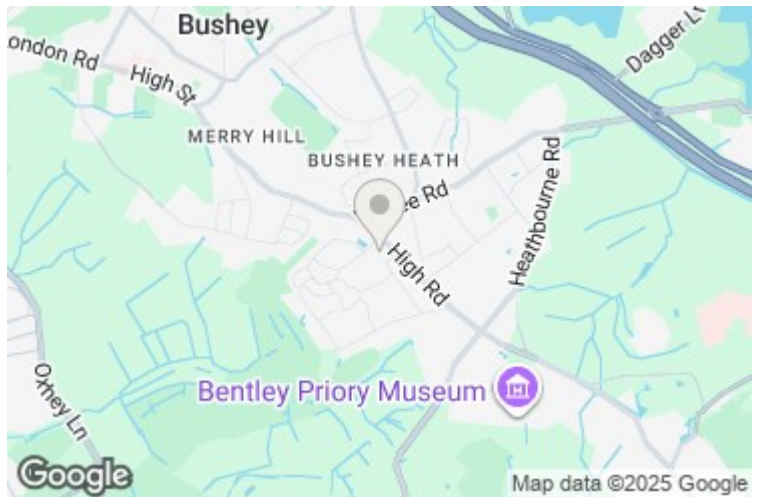
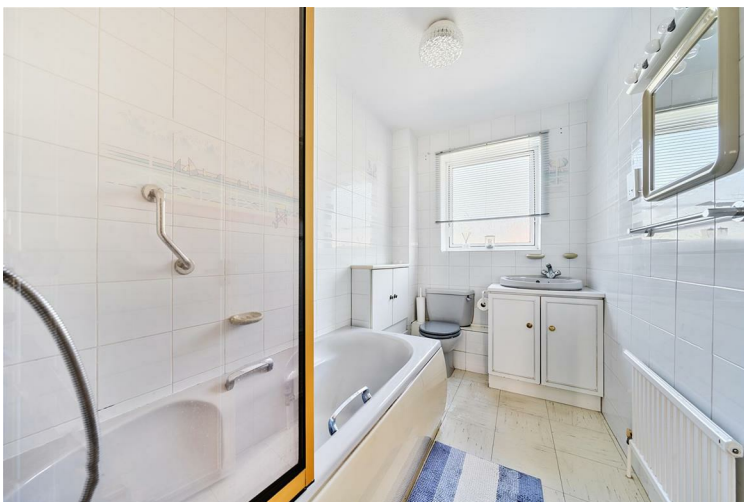
Council Tax Band D £2,289 per annum.

To the best of their knowledge the vendor advises us that the property is offered as a share of the freehold and has approximately 900 years remaining on the lease with an annual service charge of £1,000 and ground rent of approximately £31.50 per annum. As always, buyers are recommended to gain verification from their solicitor during the conveyancing process.

## Disclaimer:

While every care and effort has been made to ensure these details are correct their accuracy cannot be guaranteed and so should not form part of any contract.

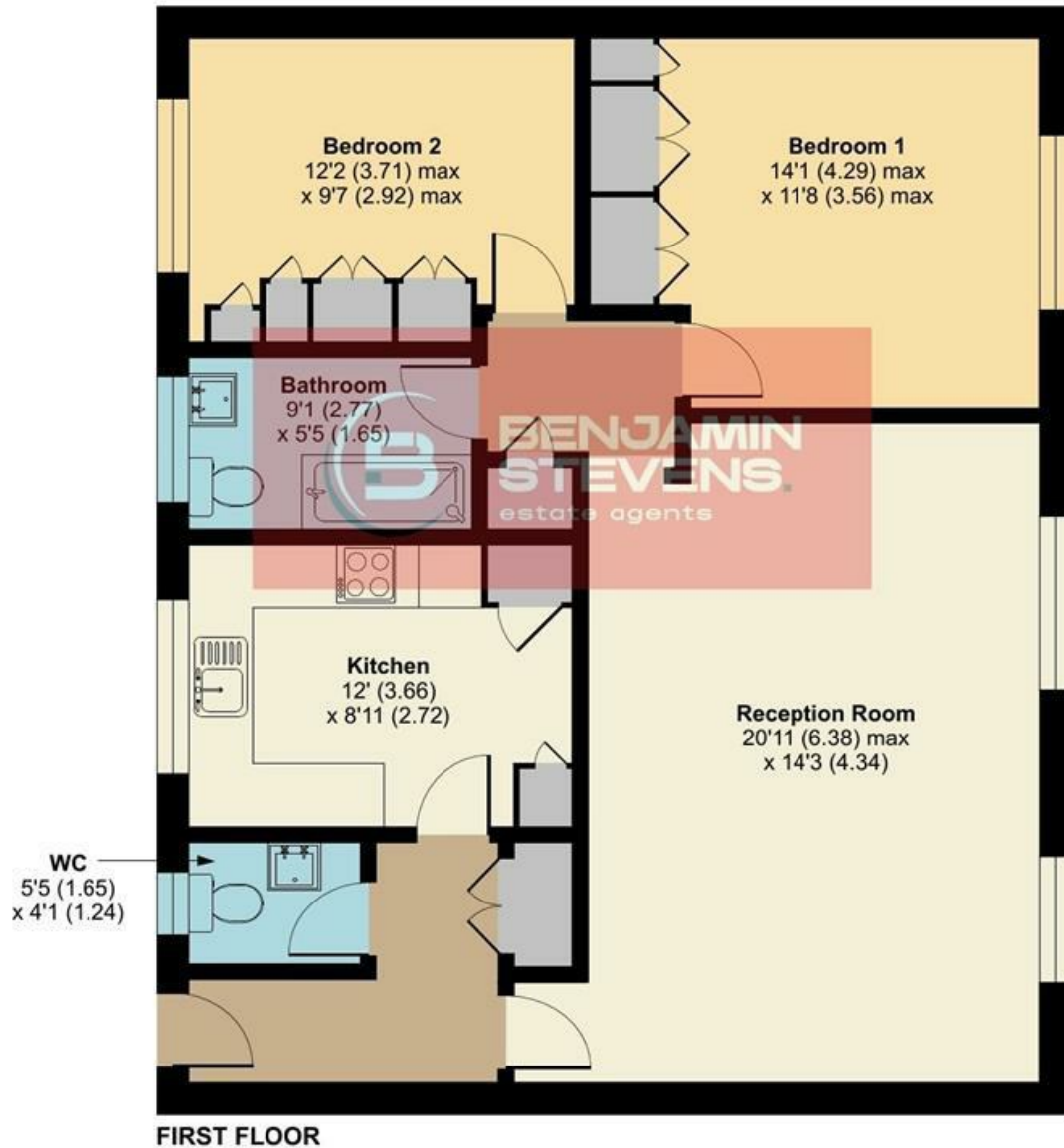
## Bathroom:



# Howton Place, Bushey Heath, Bushey, WD23

Approximate Area = 885 sq ft / 82.2 sq m

For identification only - Not to scale



Floor plan produced in accordance with RICS Property Measurement 2nd Edition, Incorporating International Property Measurement Standards (IPMS2 Residential). © richcom 2025. Produced for Benjamin Stevens. REF: 1295799

