



Flat 32, Rosetta Court, 112 Church Road

London

£165,000



# Flat 32

Rosetta Court, London

Unique ground floor 1 bed flat in exclusive over 55's development. Ideal for downsizing with potential for modernisation. Tranquil outdoor space and convenient location near amenities and transport links. Ideal sanctuary for peaceful living.

Council Tax band: B

Tenure: Leasehold

EPC Energy Efficiency Rating: C

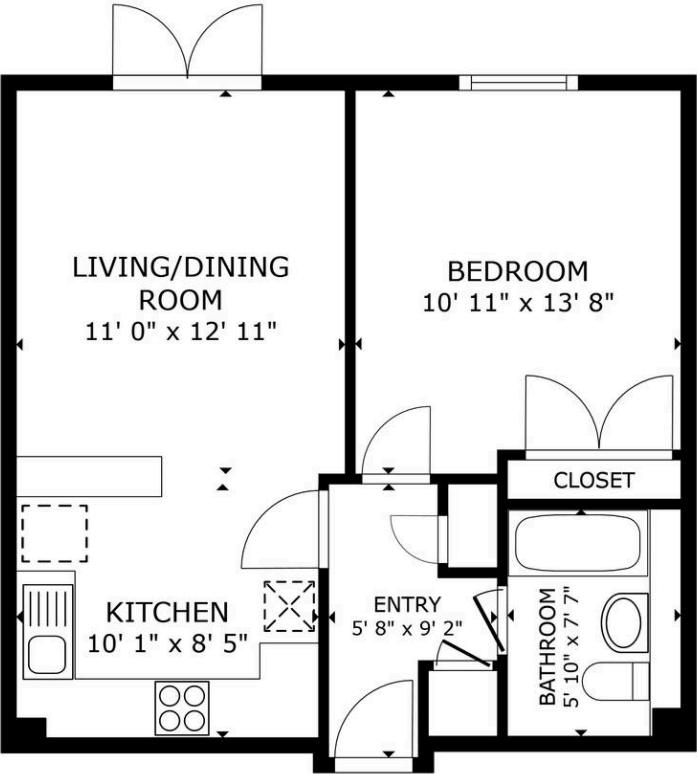
EPC Environmental Impact Rating: E



COMMUNAL GARDEN

OFF STREET

1 Parking Space

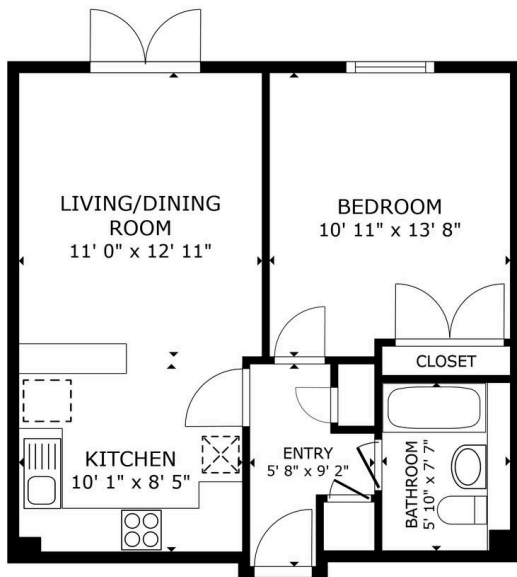


FLOOR PLAN



GROSS INTERNAL AREA  
FLOOR PLAN 483 sq.ft.  
TOTAL : 483 sq.ft.  
SIZES AND DIMENSIONS ARE APPROXIMATE, ACTUAL MAY VARY.





FLOOR PLAN

GROSS INTERNAL AREA  
FLOOR PLAN 483 sq.ft.  
TOTAL : 483 sq.ft.  
SIZES AND DIMENSIONS ARE APPROXIMATE, ACTUAL MAY VARY.





## We Can Properties

8 Streatham Vale, London – SW16 5TE

0203 890 6464 • [hello@wecanproperties.com](mailto:hello@wecanproperties.com) •

