



135 Nutfield Road, Merstham
Redhill

Guide Price **£425,000**



135 Nutfield Road

Merstham, Redhill

A charming three bedroom mid-terraced house, this property offers the perfect blend of space and comfort for a growing family. The entrance foyer leads to a large living room, providing ample space for relaxation and entertainment, while the adjacent kitchen/diner offers the ideal setting for family meals and gatherings. Upstairs, three well-proportioned bedrooms provide comfortable accommodation for all family members, accompanied by a modern family bathroom for convenience.

Conveniently located in South Merstham, this home is surrounded by local amenities, providing easy access to nearby shops and services. Situated in a quaint village location, residents can enjoy the tranquillity of the surroundings while still being within reach of essential facilities. The property also benefits from a garage en-block, ensuring secure parking and additional storage space for residents.

This late 1960s-built house is ideally positioned for families, with a variety of schools nearby including Lime Tree and Merstham Park. For transportation, residents can take advantage of the bus routes connecting to Merstham and Redhill train stations, offering direct services to central London and Gatwick airport for added convenience.

Nature enthusiasts will appreciate the proximity to Mercers Park, where a range of watersports and fishing activities await. Nearby, The Inn on Pond pub provides a charming setting next to a cricket ground, perfect for enjoying leisurely evenings just half a mile away.

Council Tax band: D

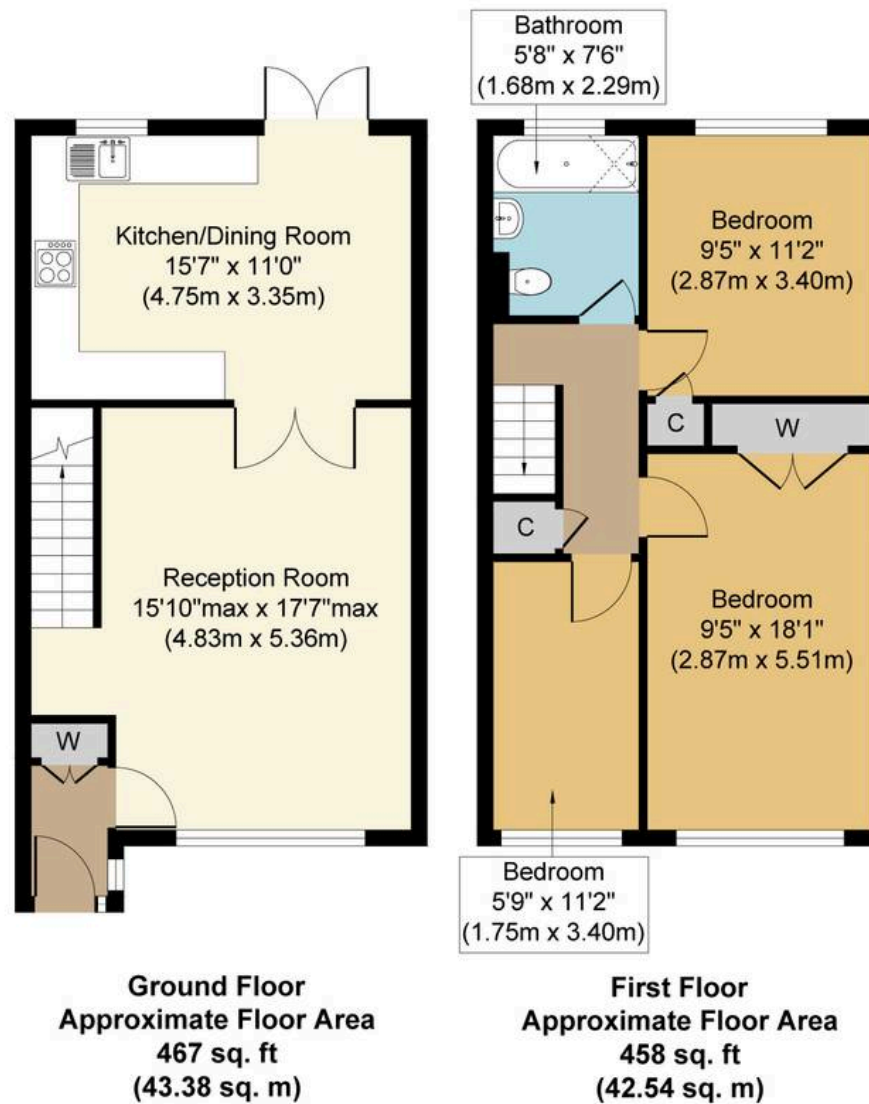
Tenure: Freehold



- Three Bedroom Mid terrace Family Home
- Large Living Room And Kitchen/diner







Nutfield Road, RH1
Approx. Gross Internal Floor Area 925 sq. ft / 85.92 sq. m

Whilst every attempt has been made to ensure the accuracy of the floor plan contained here, measurements of doors, windows, rooms and any other items are approximate and no responsibility is taken for any error, omission, or mis-statement. The measurements should not be relied upon for valuation, transaction and/or funding purposes. This plan is for illustrative purposes only and should be used as such by any prospective purchaser or tenant. The services, systems and appliances shown have not been tested and no guarantee as to their operability or efficiency can be given.

Copyright Property Portraits | www.propertyportraits.co.uk

