



18 Woodfield Close

Redhill

Guide Price **£950,000**



18 Woodfield Close

Situated in a highly sought-after cul-de-sac, this exceptional four bedroom detached house offers the perfect blend of space and convenience. Extended to provide over 1700 sq.ft. of accommodation, this charming family home boasts four double bedrooms, including a master with en-suite, two large reception rooms, a kitchen breakfast room, a utility room, and a cloakroom/wc. This property offers potential for the discerning buyer to create their dream home, catering to the needs of modern family living with ease. Moreover, the stunning mature rear garden on a bold plot provides a tranquil escape from the hustle and bustle of daily life.

The outside space of this property is equally as impressive, featuring a large rear garden that is perfect for entertaining or simply unwinding outdoors. Additionally, this property comes complete with a double garage and off-road parking, offering both practicality and convenience. Situated within close proximity to Redhill train station and town centre, this home enjoys excellent transport links and easy access to a range of amenities, making it an ideal choice for those seeking a perfect balance of comfort and accessibility. Don't miss out on the opportunity to make this remarkable property your own and enjoy the exceptional lifestyle it has to offer.

Tenure: Freehold

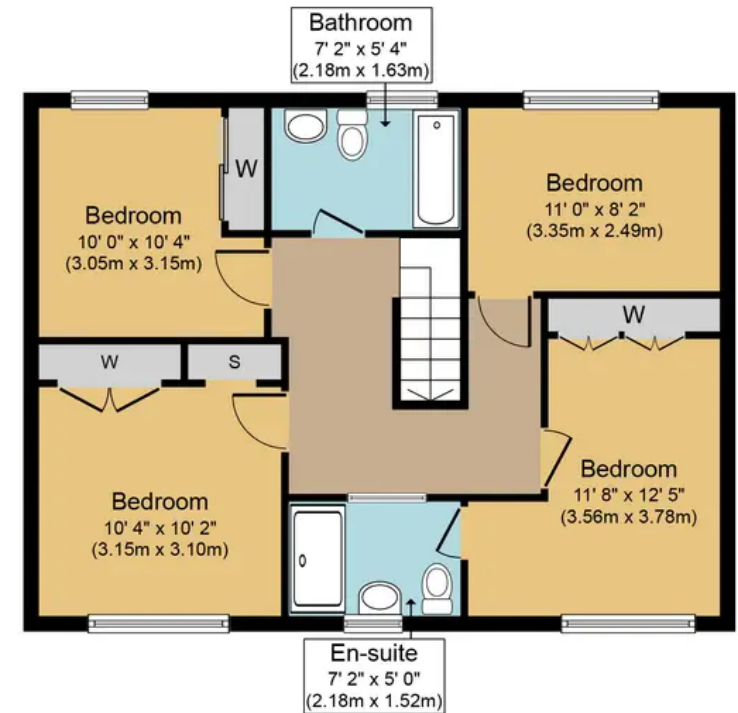
- Council Tax Band F. EPC Rating D (67)







Ground Floor
 Approximate Floor Area
 1,063 sq. ft.
 (98.8 sq. m.)



First Floor
 Approximate Floor Area
 660 sq. ft.
 (61.3 sq. m.)



Woodfield Close, RH1
Approx. Gross Internal Floor Area 1,724 sq. ft. (160.1 sq. m.)



Whilst every attempt has been made to ensure the accuracy of the floor plan contained here, measurements of doors, windows, rooms and any other items are approximate and no responsibility is taken for any error, omission, or mis-statement. The measurements should not be relied upon for valuation, transaction and/or funding purposes. This plan is for illustrative purposes only and should be used as such by any prospective purchaser or tenant. The services, systems and appliances shown have not been tested and no guarantee as to their operability or efficiency can be given.