



13 Trentham Road.

Redhill

Guide Price £550,000



13 Trentham Road

Situated in a popular cul-de-sac in Earlswood, this beautiful semi-detached character cottage is a true gem. Offering three double bedrooms, Wisteria Cottage provides ample space for a growing family or those seeking a comfortable and charming home. The property boasts two reception rooms, allowing for flexible living arrangements, as well as a convenient ground floor bathroom and a top floor shower room with a WC. With off-road parking for 2-3 cars, the every-day commute is a breeze.

Nestled in a convenient location close to Earlswood Train Station, shops, and schools, Wisteria Cottage offers both practicality and luxury. The cottage garden, which wraps around the rear and side of the property, is a picturesque haven that provides a peaceful escape from the hustle and bustle of daily life. The large bay window in the lounge floods the room with natural light, enhancing the warm and inviting atmosphere created by the cast iron fireplace. With period features throughout, such as fireplaces, a stable door, sash windows, and high ceilings, this late Victorian era property is sure to enchant all who enter.

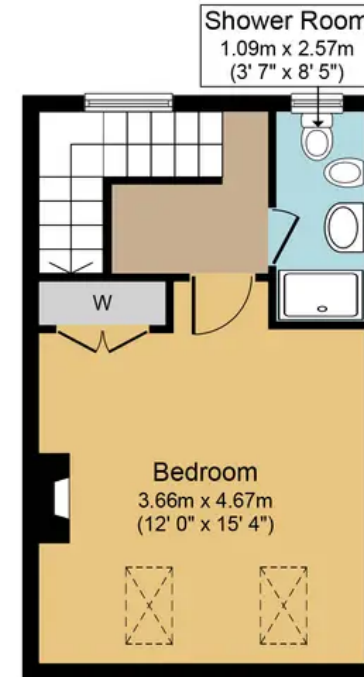
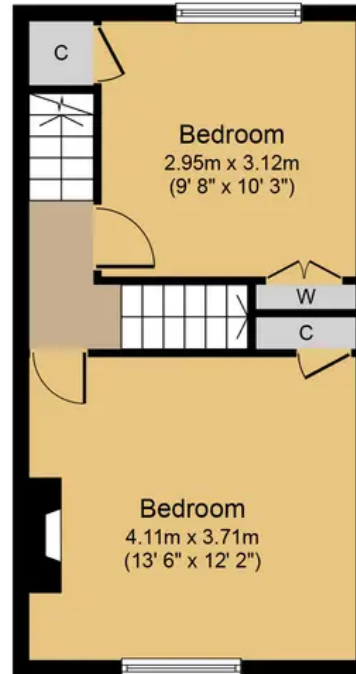
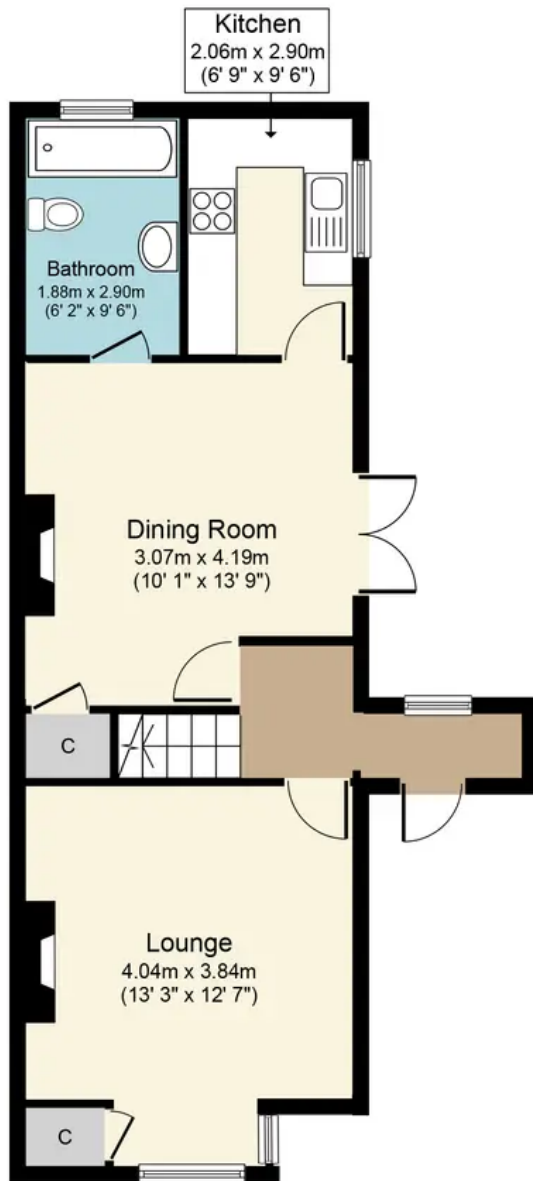
Don't miss the opportunity to make Wisteria Cottage your new home. Contact us today to arrange a viewing and experience the charm and comfort that this delightful property has to offer.

Council Tax band: D

Tenure: Freehold







Ground Floor
Approximate Floor Area
570 sq.ft.
(52.9 sq.m.)

First Floor
Approximate Floor Area
337 sq.ft.
(31.3 sq.m.)

Second Floor
Approximate Floor Area
291 sq.ft.
(27.0 sq.m.)

Trentham Road, RH1
Approx. Gross Internal Floor Area 1,197 sq.ft. (111.2 sq.m.)



Whilst every attempt has been made to ensure the accuracy of the floor plan contained here, measurements of doors, windows, rooms and any other items are approximate and no responsibility is taken for any error, omission, or mis-statement. The measurements should not be relied upon for valuation, transaction and/or funding purposes. This plan is for illustrative purposes only and should be used as such by any prospective purchaser or tenant.

The services, systems and appliances shown have not been tested and no guarantee as to their operability or efficiency can be given.