



75 Meadow Way
Reigate

Guide Price **£425,000**

hm halliwell
marks

75 Meadow Way

We are pleased to present to the market this charming three-bedroom semi-detached bungalow nestled in the sought-after South Reigate location of Woodhatch, to the South of Reigate Town centre.

Upon entering the property, you are greeted by a well-proportioned lounge area ideal for relaxing and entertaining guests. The room is flooded with natural light, enhancing the inviting atmosphere that permeates throughout the home.

Moving through, you will find a modern shower/wet room/WC adding convenience and practicality to the property.

The property features three bedrooms, two doubles and a single each offering a tranquil retreat for rest and relaxation.

Comfortable and thoughtfully designed, these rooms provide residents with a peaceful sanctuary to unwind after a long day.

Outside, the large south/east facing rear garden presents an ideal setting for outdoor activities and al fresco dining (perfect for summer gatherings and enjoying the fresh air). The property also benefits from off-road parking for three cars, with the potential to reinstate a garage, offering added convenience for homeowners.

Furthermore, the property falls under Council Tax Band D and boasts an EPC rating of 67, reflecting its energy efficiency and cost-effectiveness.

In terms of educational facilities, Reigate School and Sandcross Primary School are conveniently located within just 0.5 miles, making this property an ideal choice for families with school-going children.

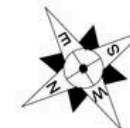
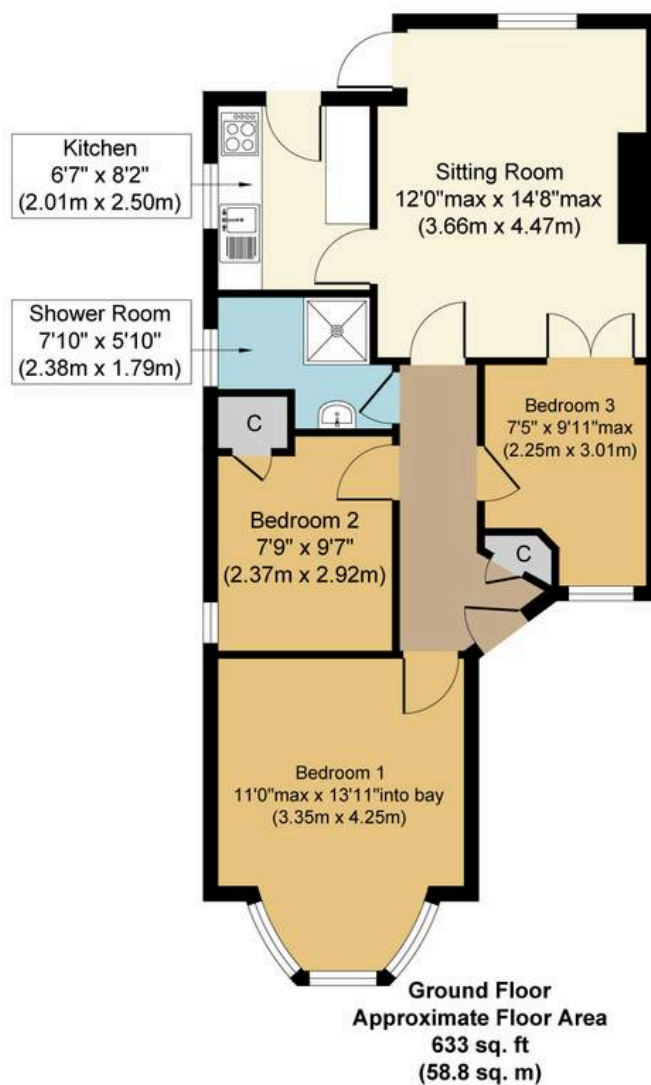
Overall, this lovely semi-detached bungalow offers a blend of comfort, convenience, and style, making it a must-see for those seeking a delightful home in a desirable location. Contact us today to arrange a viewing and secure this fantastic property opportunity.

Council Tax band: D. Tenure: Freehold

- Three Bedroom Semi-detached Bungalow
- Sought-after South Reigate Location
- Large South/east Facing Rear Garden







Meadow Way, RH2

Approx. Gross Internal Floor Area 633 sq. ft. (58.8 sq. m)



Whilst every attempt has been made to ensure the accuracy of the floor plan contained here, measurements of doors, windows, rooms and any other items are approximate and no responsibility is taken for any error, omission, or mis-statement. The measurements should not be relied upon for valuation, transaction and/or funding purposes. This plan is for illustrative purposes only and should be used as such by any prospective purchaser or tenant.

The services, systems and appliances shown have not been tested and no guarantee as to their operability or efficiency can be given.

Copyright Property Portraits | www.propertyportraits.co.uk