



6 Somerset Road

Redhill

Guide Price **£550,000**

 **halliwell
marks**

6 Somerset Road

Positioned in the heart of the sought-after Meadvale neighbourhood, this stunning three-bedroom Victorian terrace stands tall, encapsulating the epitome of elegant living. Boasting a comprehensive refurbishment, the property features a modern kitchen and bathroom, enriching the space with contemporary sophistication. Upon entering the house through a charming porch, the living and dining room greets inhabitants with its well-proportioned layout and bay window that exudes a sense of grandeur. The large rear garden bathed in South Westerly sunlight offers the perfect retreat for relaxation and alfresco entertainment. The generous lawn area and patio create a seamless indoor-outdoor living experience, combining solace and comfort in perfect harmony.

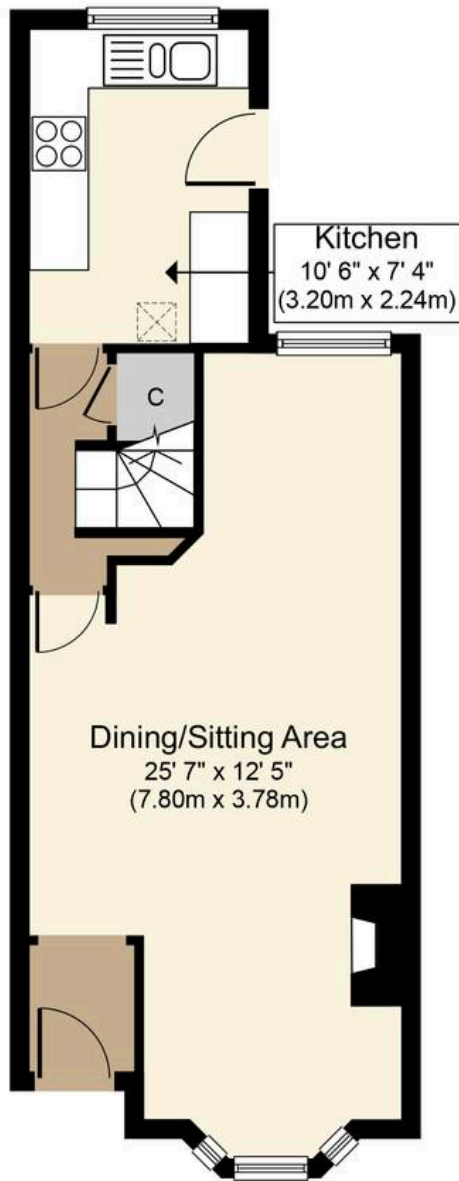
Outside, the property shines with its large South Westerly garden, providing a sanctuary of tranquillity amidst the bustling city. Ideal for those searching for a peaceful respite, the garden offers a private oasis that invites residents to bask in the beauty of nature or host gatherings under the sun-drenched skies. With its close proximity to reputable local schools and convenient access to Redhill and Reigate town centres, this charming Victorian terrace stands as a beacon of sophisticated living in a prime location. From the stylish interiors to the expansive outdoor spaces, this property truly represents a harmonious blend of timeless elegance and modern convenience, making it the perfect place to call home.

Council Tax band: E

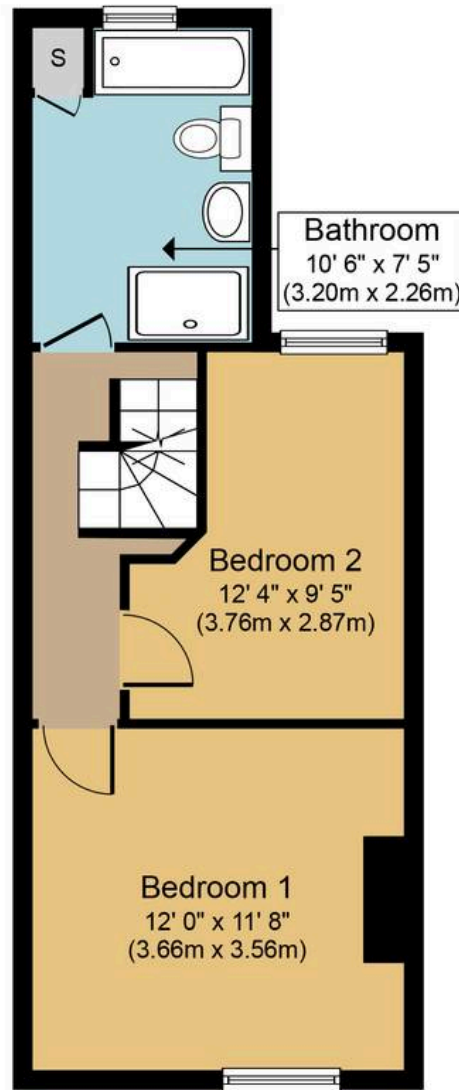
Tenure: Freehold



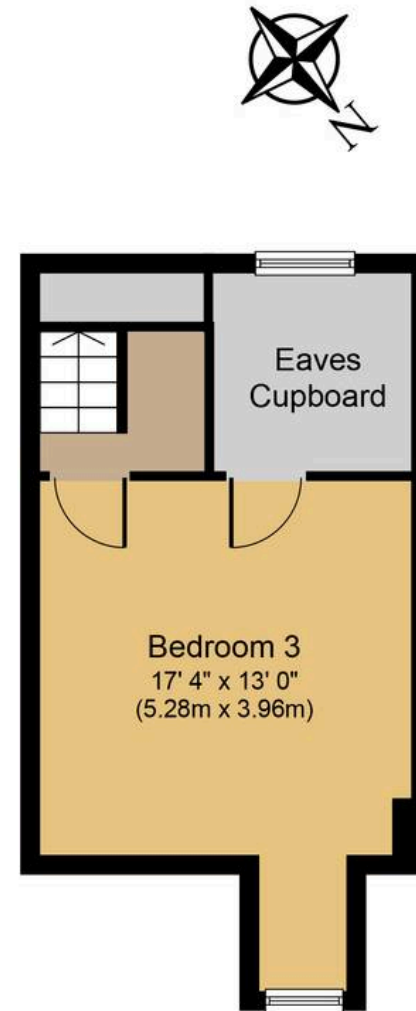




Ground Floor



First Floor
Somerset Road, RH1



Second Floor

Approx. Gross Internal Floor Area 1130 sq. ft. (105 sq. m.)

Whilst every attempt has been made to ensure the accuracy of the floor plan contained here, measurements of doors, windows, rooms and any other items are approximate and no responsibility is taken for any error, omission, or mis-statement. This plan is for illustrative purposes only and should be used as such by any prospective purchaser or tenant. The services, systems and appliances shown have not been tested and no guarantee as to their operability or efficiency can be given.