



12 Maple Close, Whyteleafe - CR3 0EZ

Guide Price **£385,000**





12 Maple Close

Whyteleafe

Two bedroom terraced home close to stations & Whyteleafe Park. Spacious main bedroom, garden with rear access. In need of updating. No onward chain.

Council Tax band: D

Tenure: Freehold

- Two double bedrooms
- Potential to split main bedroom into two
- Reception room with front aspect window
- Kitchen/breakfast room with garden access
- Level rear garden with patio and lawn
- Convenient for Upper Warlingham & Whyteleafe train stations
- Located next to Whyteleafe Park
- Offered with no onward chain. In need of some updating



Two Bedroom Terraced Home with Potential to Create Third Bedroom–

No Onward Chain

Situated in a highly convenient location within easy reach of both Upper Warlingham and Whyteleafe train stations, and positioned next to the open green space of Whyteleafe Park, this two bedroom terraced property offers excellent potential for improvement and is offered to the market with **no onward chain**.

Accommodation

The property is approached via an entrance hall leading to a bright reception room with a front aspect window. To the rear, the kitchen/breakfast room extends across the width of the house and provides direct access to the garden.

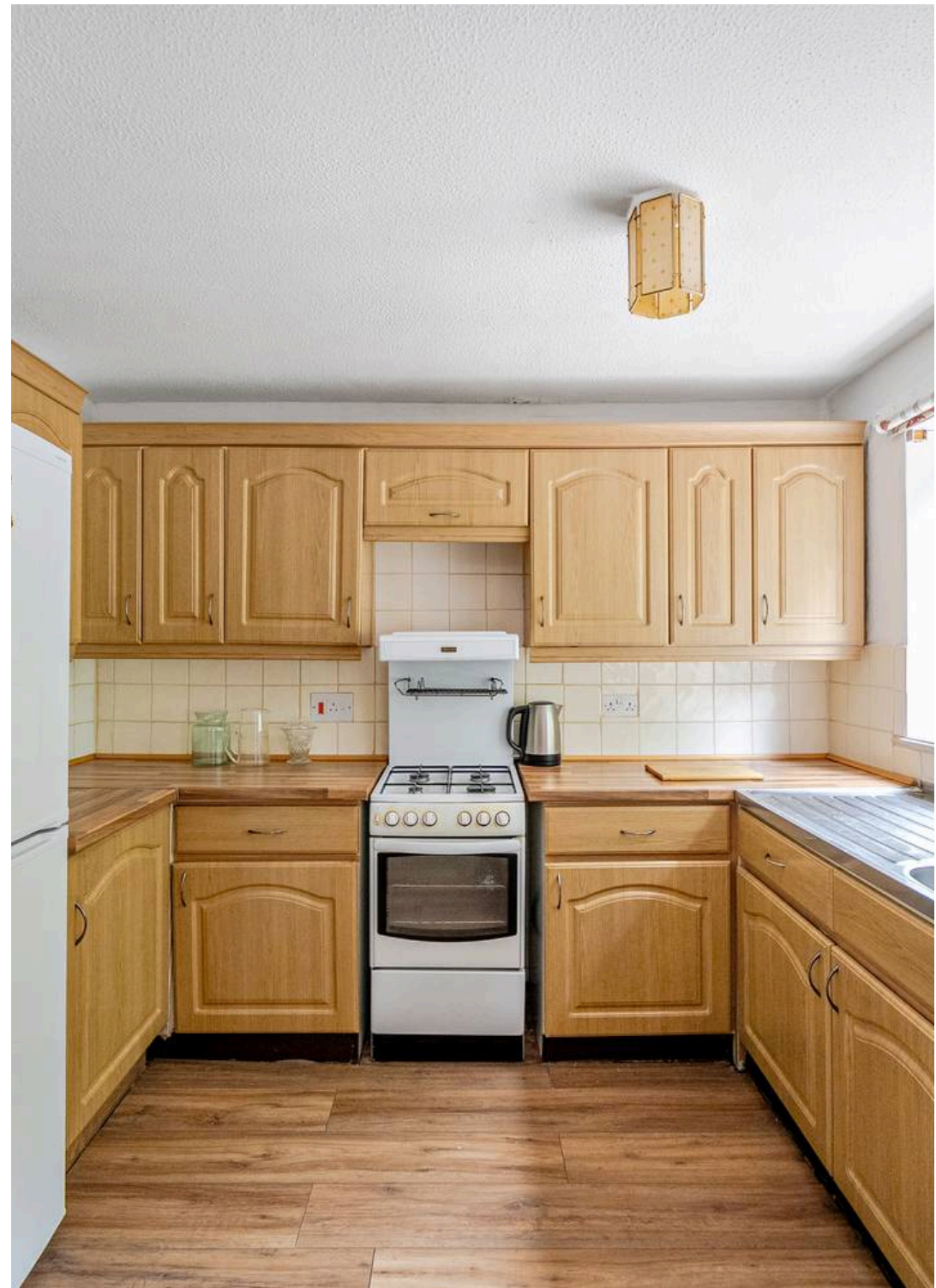
On the first floor, the main bedroom is a particularly generous size and offers scope to be reconfigured into two separate rooms if desired. The second bedroom is also a double, and there is a family bathroom.

Outside

To the rear is a level garden with a paved patio and lawn, with the added benefit of rear access. Residents' parking is available nearby.

Location

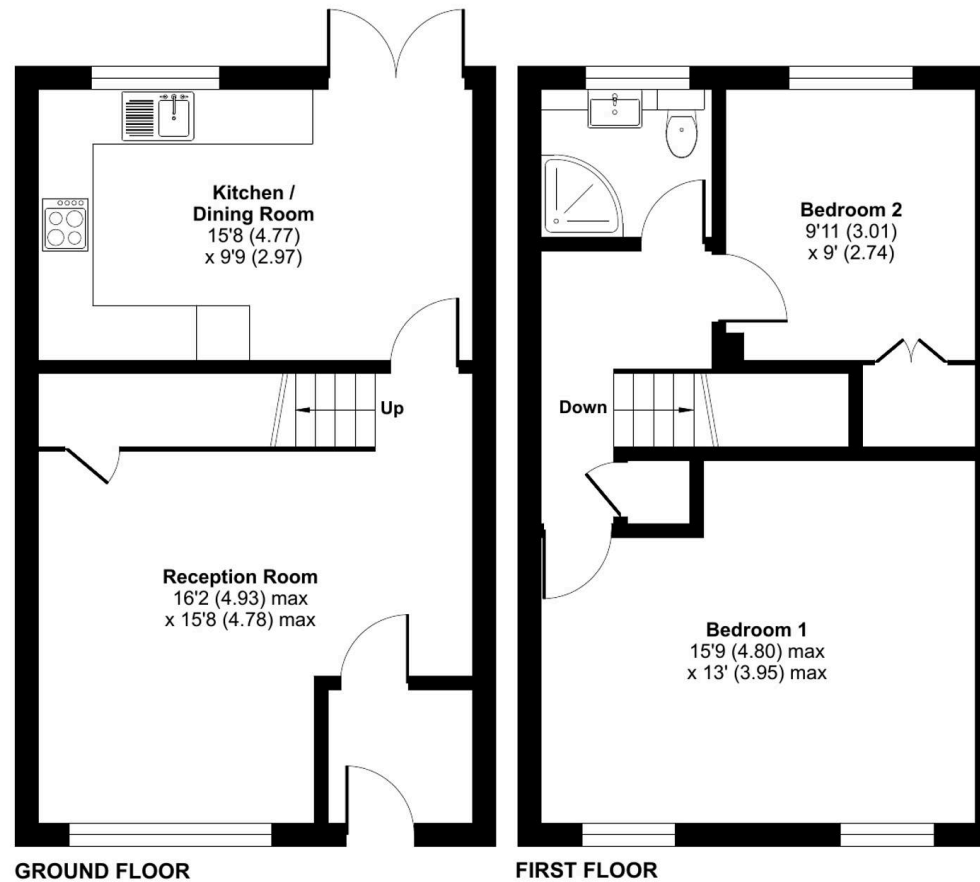
The property is ideally located close to local amenities, bus services and excellent transport links at Upper Warlingham and Whyteleafe stations, providing fast and frequent services into central London. Nearby Whyteleafe Park offers open green space, making this a convenient yet pleasant setting for commuters and families alike.



Maple Close, Whyteleafe, CR3

Approximate Area = 826 sq ft / 76.7 sq m

For identification only - Not to scale





Park & Bailey Warlingham

Park & Bailey, 426 Limpsfield Road - CR6 9LA

01883 626326 • warlingham@parkandbailey.co.uk • www.parkandbailey.co.uk/

As part of our service, we may recommend ancillary providers to assist with your property transaction. Please scan here for our Referral Fee disclosure information.

