



CHARLES KNIGHT  
ESTATE AGENTS



## Flat 6, 96 Southwood Road , Eltham, SE9 3QS £1,750

Step into contemporary comfort with this beautifully designed, first-floor apartment in a newly built gated development. This spacious home features two generously sized double bedrooms, perfect for relaxation and rest.

The sleek, fully integrated kitchen seamlessly flows into a bright and airy open-plan living area, where double doors open onto a charming Juliet balcony – flooding the space with natural light and fresh air. A modern, high-spec bathroom enhances the sense of luxury, while elegant spotlights throughout the home add a refined, sophisticated touch.

Enjoy peace of mind with your own designated off-street parking space, offering both security and convenience.

### Location Highlights:

Just 0.1 miles from St Olave's Preparatory School

Only a 5-minute walk to New Eltham Main Line Station – ideal for commuters

Close to local shops, cafes, and bus routes

Excellent access to A20, South Circular, and M25

This apartment perfectly blends style, comfort, and practicality – a must-see for anyone seeking modern living in a well-connected location.

### Viewing

Please contact our Lewisham Office on 02088 524441 if you wish to arrange a viewing appointment for this property or require further information.



2



1

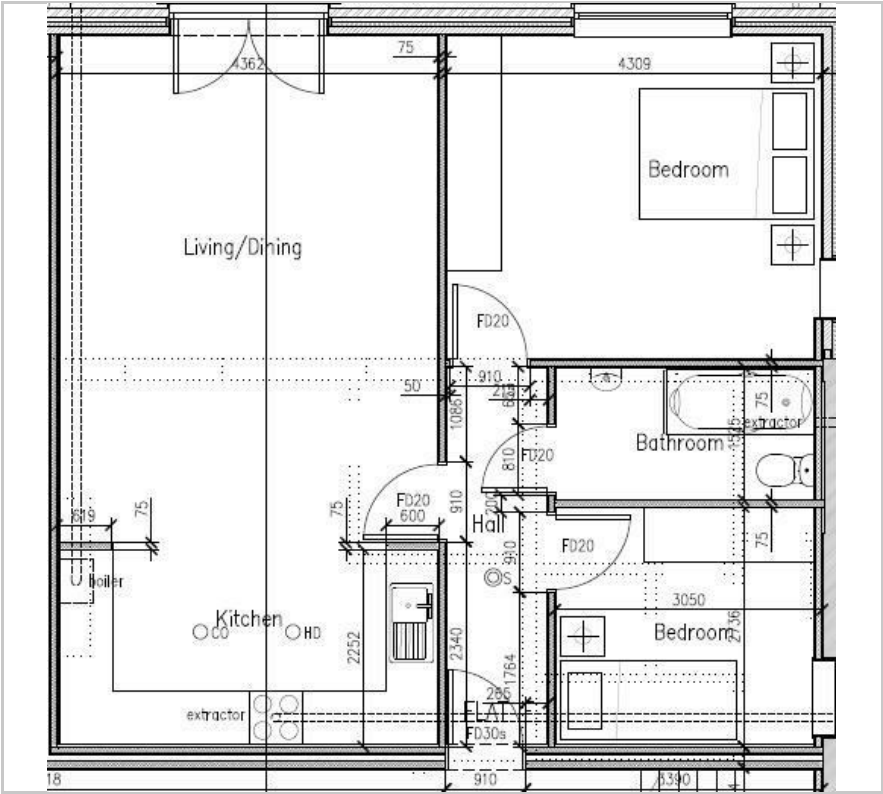


1



B

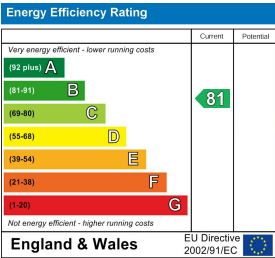
Floor Plan



Area Map



Energy Efficiency Graph



These particulars, whilst believed to be accurate are set out as a general outline only for guidance and do not constitute any part of an offer or contract. Intending purchasers should not rely on them as statements of representation of fact, but must satisfy themselves by inspection or otherwise as to their accuracy. No person in this firms employment has the authority to make or give any representation or warranty in respect of the property.