



## 129 Ryeland Close

Yiewsley, West Drayton, Middlesex, UB7 8AY

**Guide Price £159,950**

Andrews Residential are delighted to present to the market this ground floor studio apartment. The property is situated in a quiet residential development close to Hillingdon hospital and West Drayton mainline station. In our opinion this would make an ideal first time or investment purchase. Offered to the market with the benefit of LONG LEASE and NO ONWARD CHAIN. Internal viewings are recommended to avoid disappointment.



# Ryeland Close UB7

Approximate Gross Internal Floor Area = 28.3 sq m / 305 sq ft

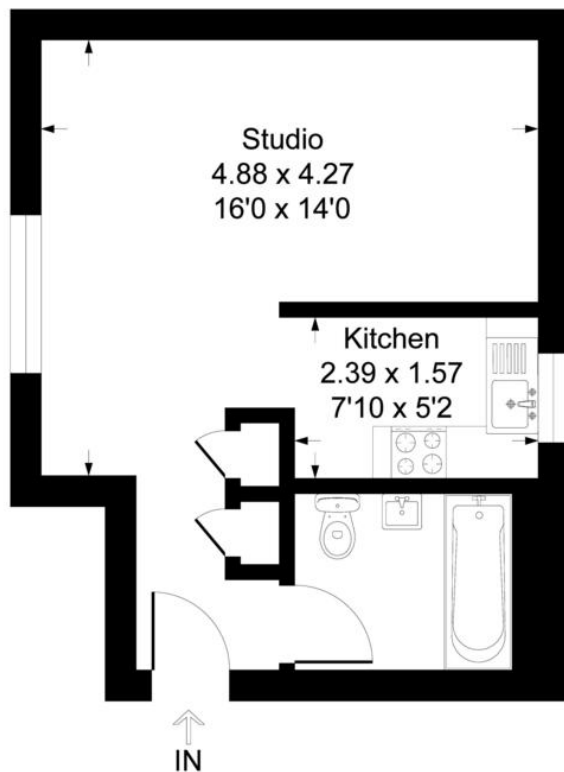


Illustration for identification purposes only, measurements are approximate, not to scale.

Hillingdon office  
11 Crescent Parade  
Hillingdon  
UB10 0LG

Uxbridge office  
41 Belmont Road  
Uxbridge  
UB8 1QT

Hillingdon office 01895 231311  
Uxbridge office 01895 707777  
info@andrewsresidential.co.uk  
www.andrewsresidential.co.uk

Agents Note: Whilst every care has been taken to prepare these sales particulars, they are for guidance purposes only. All measurements are approximate and for general guidance purposes only and whilst every care has been taken to ensure their accuracy, they should not be relied upon and potential buyers are advised to recheck the measurements. Andrews Residential is a trading name of Halcladix Limited, a limited company incorporated in England and Wales under registration number 10898495