



- Two doubled bedroom mid terrace home
- Short walk to Northolt Underground Station
- South facing rear garden
- Potential to extend STTP

7 Poppy Close, Northolt, UB5 5TP

Andrews Residential are delighted to offer to the market this two double bedroom mid terrace house. The property is deceptively spacious and boasts clean and modern interiors over two floors. Located in a quiet residential close just moments away from Northolt's amenities, the property benefits from allocated parking, potential to extend and a sunny aspect low maintenance rear garden.

Guide Price £425,000

Property Description

PROPERTY

Accommodation briefly comprises of entrance, downstairs cloakroom, 10ft modern fitted kitchen and 13ft reception room with doors to a rear garden. To the first floor are two double bedrooms and the family bathroom.

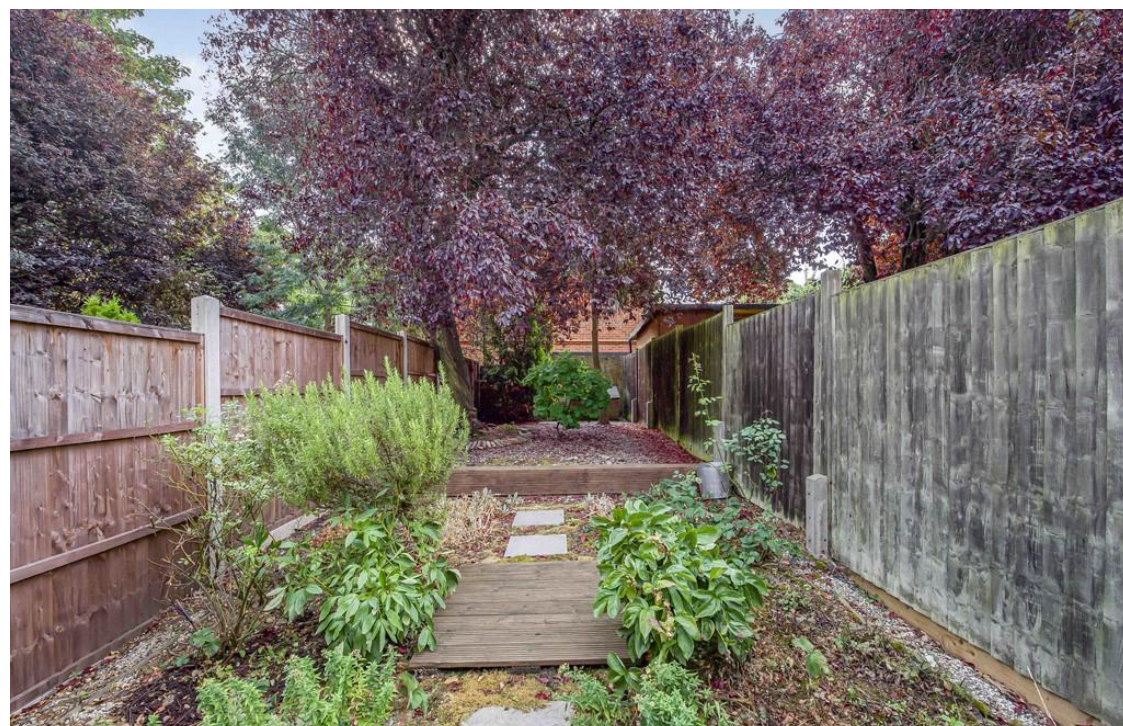
OUTSIDE

To the rear is a secluded, sunny aspect, low maintenance rear garden. To the front of the property is the allocated parking space for the property.

LOCATION

Poppy Close is a quiet residential close, situated in a modern development close to Northolt Village, the Target roundabout and the A40/M40 motorway - offering easy access to Heathrow airport, Northolt's Central line station, Hayes Bypass and the M4/M25. There is a wide range of local shopping facilities along Yeading Lane and easy access to a vast array of highly regarded Primary & Secondary schools.





Poppy Close

Approximate Gross Internal Floor Area = 59.5 sq m / 641 sq ft

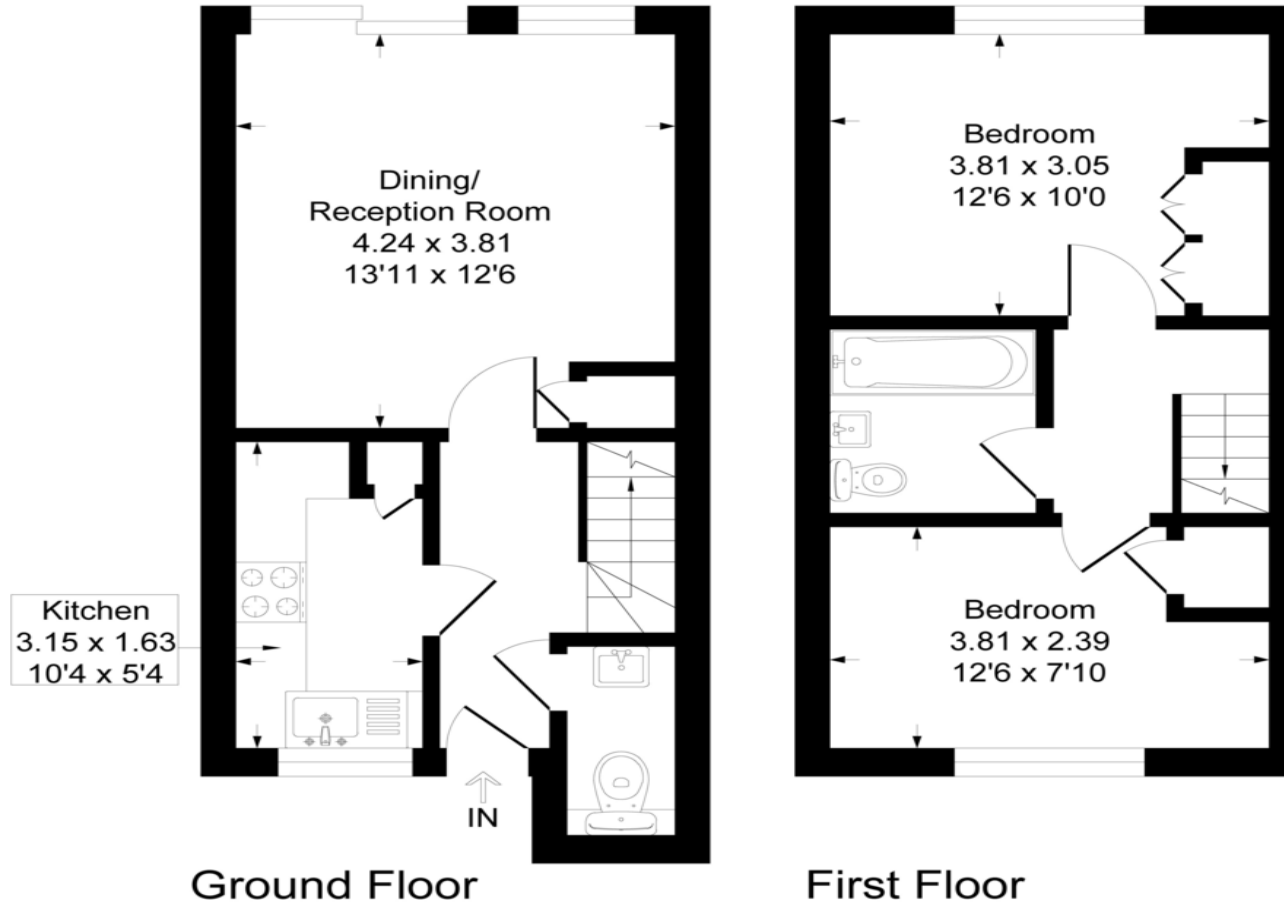


Illustration for identification purposes only, measurements are approximate, not to scale.

Hillingdon office
11 Crescent Parade
Hillingdon
UB10 0LG

Uxbridge office
41 Belmont Road
Uxbridge
UB8 1QT

Hillingdon office 01895 231311
Uxbridge office 01895 707777
info@andrewsresidential.co.uk
www.andrewsresidential.co.uk

Agents Note: Whilst every care has been taken to prepare these sales particulars, they are for guidance purposes only. All measurements are approximate and for general guidance purposes only and whilst every care has been taken to ensure their accuracy, they should not be relied upon and potential buyers are advised to recheck the measurements. Andrews Residential is a trading name of Halcledix Limited, a limited company incorporated in England and Wales under registration number 10898495