



- Two double bedroom end of terrace
- Two bathrooms
- Brand new build
- Stunning condition

38a Hazeldene Gardens, Hillingdon, Middlesex , UB10 9DJ

Guide Price £499,950

Andrews Residential are delighted to offer to the market this two double bedroom, two bathroom brand new end of terrace. Boasting modern fresh interiors over two floors this property is a must see and would make an ideal first-time purchase. Early internal viewings are strongly recommended to avoid disappointment.



Property Description

PROPERTY

Accommodation briefly comprises of a large inviting entrance, a beautiful ground floor shower room, 27ft kitchen reception with modern kitchen with fully integrated appliances, hardwood floors and bi -folding doors leading to a sunny aspect low maintenance rear garden. To the first floor are two large double bedrooms and a modern fitted shower room. The property is fitted with concealed integrated wiring for Virgin Media broadband.

OUTSIDE

To the rear of the property is a low maintenance rear garden, with patio and lawn area, flower and shrub borders and own side access from front to rear with sensor external lighting. There is a block paved driveway providing off street parking for two vehicles and an electric car charging point.

LOCATION

Hazeldene Gardens is located on the popular Oak Farm offering access to several local amenities including shops, Hillingdon's Metropolitan/Piccadilly line train station and a few highly regarded local schools including St Bernadette's, Oak Farm and Bishopshalt senior school. The 278 bus provides access to West Ruislip station (central line), Hayes and Harlington station (national rail) and Heathrow Airport, which can be picked up at Oak Farm library. It also has access to the A40/ M40 with its links to London and the Home Counties as well as a short drive away from Uxbridge Town centre with its multitude of bars, shops and restaurants.

DETAILS OF SALE

Freehold

London Borough of Hillingdon

No chain

Sole agents

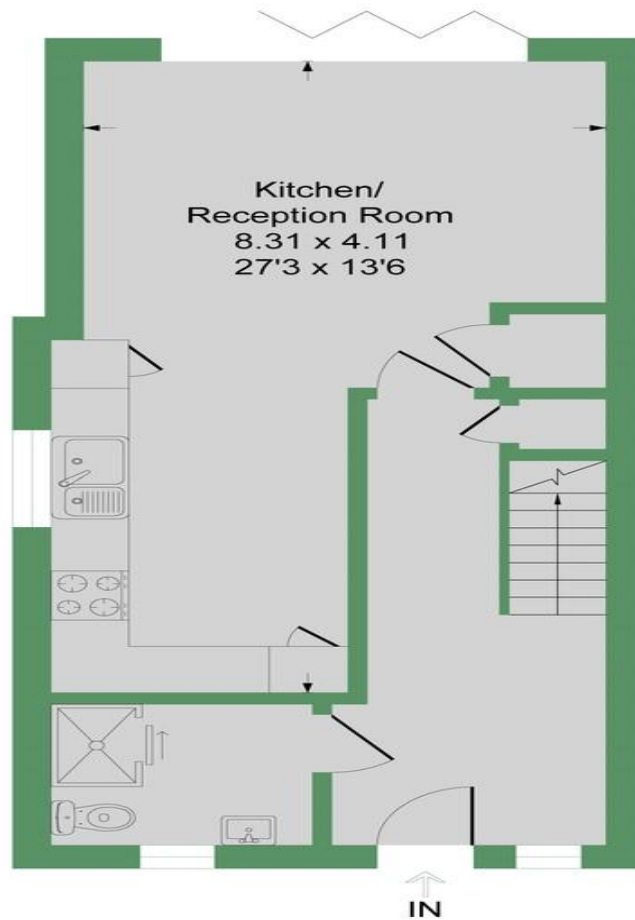
10 year structural warranty by Build Warranty.



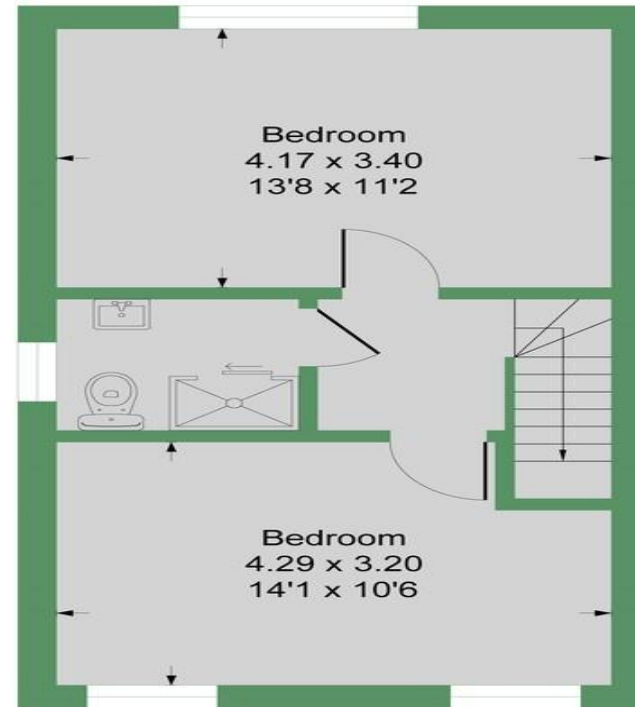


Hazeldene Gardens UB10

Approximate Gross Internal Floor Area = 81.8 sq m / 881 sq ft



Ground Floor
Approximate Floor Area
474.92 sq. ft
(44.12 sq.m)



First Floor
Approximate Floor Area
406.11 sq. ft
(37.72 sq.m)



Illustration for identification purposes only, measurements are approximate, not to scale.

Hillingdon office
11 Crescent Parade
Hillingdon
UB10 OLG

Uxbridge office
41 Belmont Road
Uxbridge
UB8 1QT

Hillingdon office 01895 231311
Uxbridge office 01895 707777
info@andrewsresidential.co.uk
www.andrewsresidential.co.uk

Agents Note: Whilst every care has been taken to prepare these sales particulars, they are for guidance purposes only. All measurements are approximate and for general guidance purposes only and whilst every care has been taken to ensure their accuracy, they should not be relied upon and potential buyers are advised to recheck the measurements. Andrews Residential is a trading name of Halcledix Limited, a limited company incorporated in England and Wales under registration number 10898495