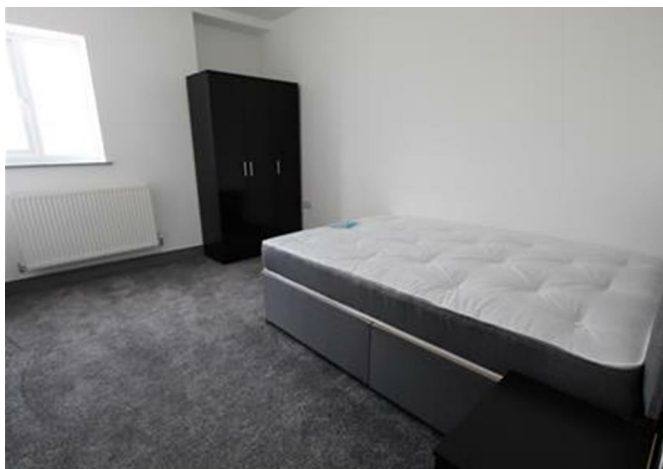
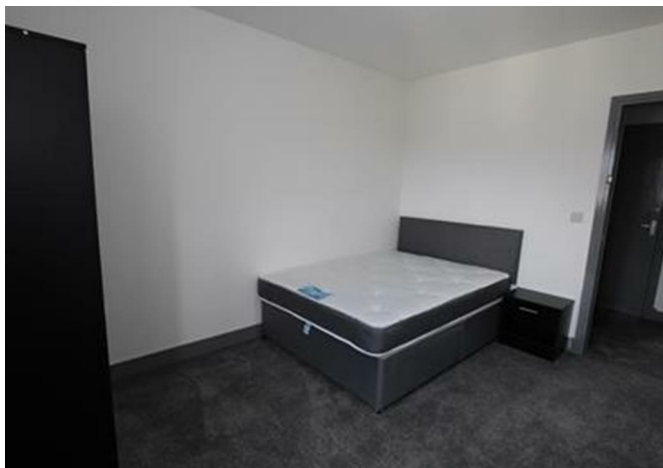




Apartment 6, 1 Cleaver Street, Burnley, Lancashire, BB10 3BE
£800 Per month



Apartment 6, 1 Cleaver Street, Burnley, Lancashire, BB10 3BE

£800 Per month

E&M Property Solutions are pleased to present to the lettings market these beautiful 2 bedroom apartments available To Let located off Briercliffe Rd, Burnley. The apartments consist of 2 spacious bedrooms, a large open plan lounge/kitchen and a 3pc family bathroom suite & shower.

The apartments have a communal landscaped garden and a private car park. Located a short walk away from all the local amenities, the beautiful Thompson Park and the main transport links.

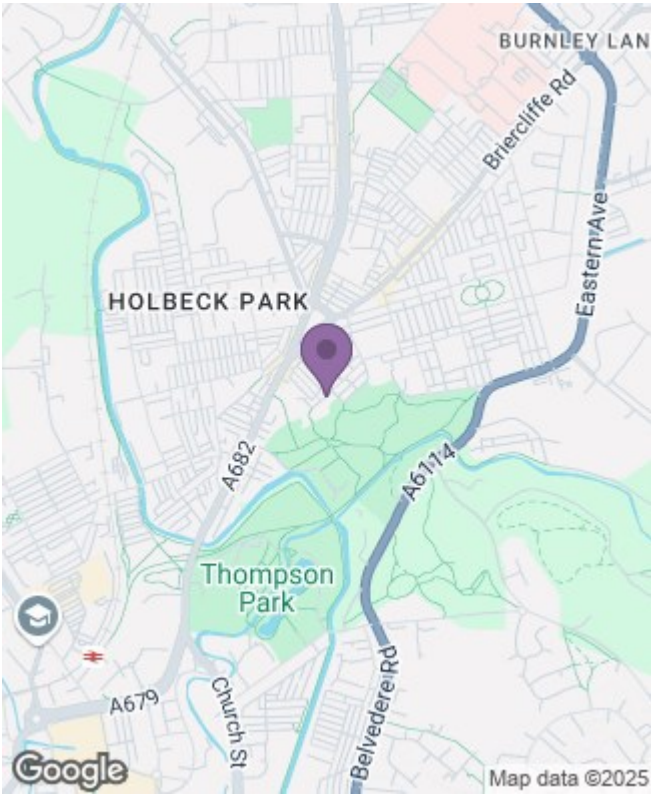
Description

Situation

Part furnished
Council Tax Band: A
Available:

Floor Plans

Area Map



Energy Performance Graph

