



27 Ivan Street, Burnley, Lancashire, BB10 1ES  
Offers in the region of £145,000





## 27 Ivan Street, Burnley, Lancashire, BB10 1ES

### Offers in the region of £145,000

Imagine the peace of mind that comes with acquiring an investment that's already delivering returns! This Tenanted HMO comes with a ready-made income stream, making it the ideal opportunity for new and experienced investors alike. Start reaping the rewards of your investment from day one.

#### Prime Location, Unbeatable Convenience:

Nestled in a neighborhood that's brimming with life, this property is a stone's throw away from the Hospital, ensuring a steady demand for quality housing. Your tenants will relish the convenience of local amenities and the ease of accessing main bus routes, making this location the envy of many.

#### Your Next Step:

Don't miss out on this show-stopping opportunity to become the proud owner of a Tenanted HMO on Ivan Street. Whether you're a seasoned investor looking to expand your portfolio or a newcomer eager to make a splash in the real estate market, this property is your golden ticket.

Contact us now to arrange a viewing and secure your future as a successful landlord. The time to invest is now, and Ivan Street is calling your name. Don't wait – make your mark on the Burnley real estate scene today!

## Description

Fully Refurbished House Share

These rooms have been done to a very high standard in June 2019. Ivan Street is only a short bus journey away from Burnley's town centre which links to Manchester via trains or bus and is walking distance to Heasandford Industrial Estate - Boohoo and Safran. It is also close to Burnley general hospital.

## Situation

3 weeks rent in advance, plus weekly rent required.

All bills are included.

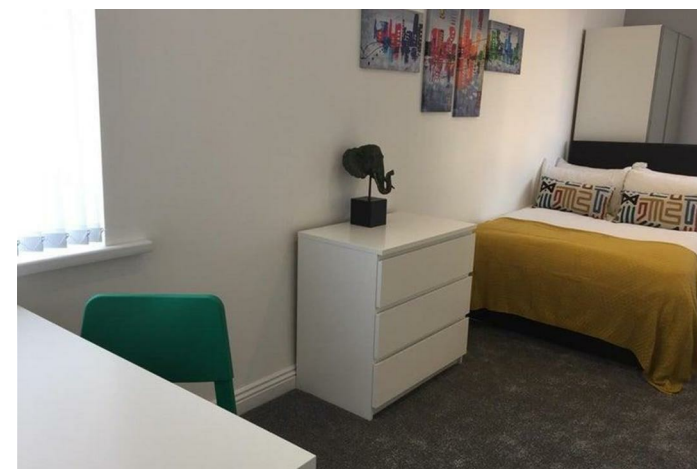
Gas/Electric  
Council Tax  
Wifi  
Water  
Monthly Cleaner  
TV License

To arrange a viewing, give us a call or email today and we will be in touch. Early viewing is recommended to avoid disappointment,

null

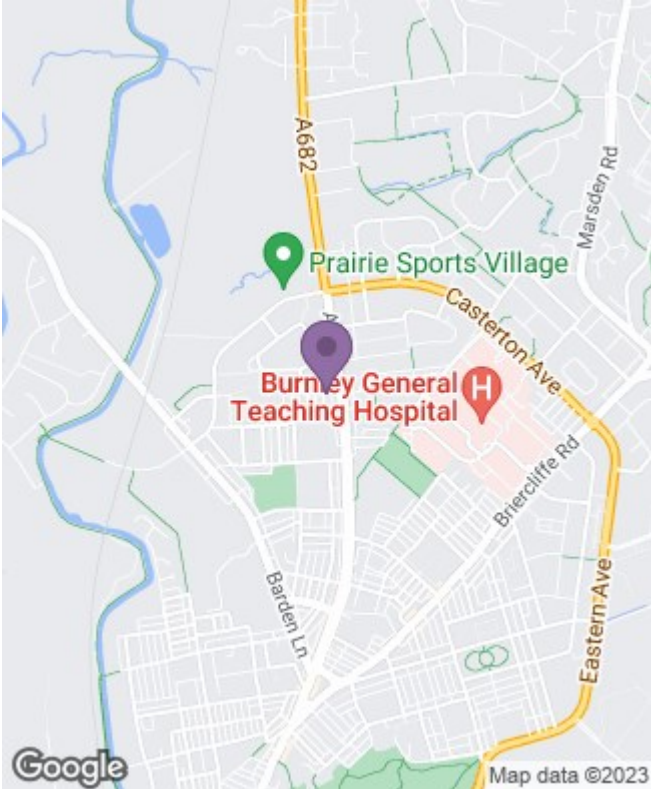
Council Tax Band: A

Available:



# Floor Plans

# Area Map



# Energy Performance Graph

