



**E&M**  
PROPERTY SOLUTIONS

25 Parkinson Street, Burnley, Lancashire, BB11 3LS  
£595 Per month





## 25 Parkinson Street, Burnley, Lancashire, BB11 3LS

**£595 Per month**

Mid-Terrace Home for Rent on Parkinson Street, Burnley.

Are you searching for your perfect rental property in Burnley? Look no further! This delightful mid-terrace home on Parkinson Street offers comfort, convenience, and charm.

Key Features:  
2 Bedrooms:  
Spacious Lounge:  
Kitchen Diner:  
Family Bathroom Suite:  
Small Rear Yard: An easy-to-maintain outdoor space.

This property is situated in a convenient location, close to local amenities, schools, and transport links, making it an excellent choice for tenants seeking a well-connected and comfortable home.

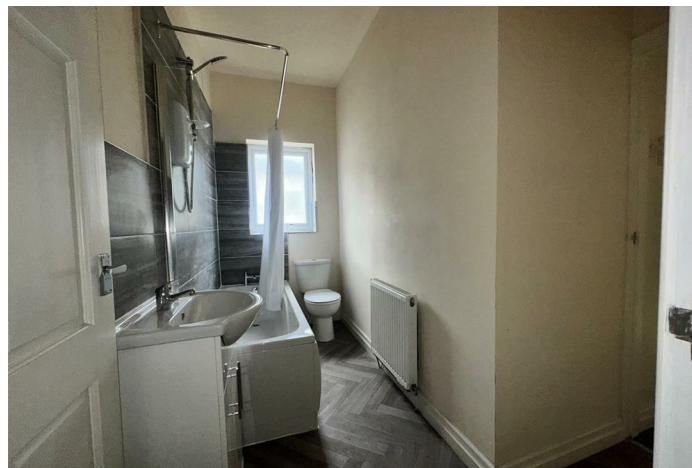
Don't miss out! Contact us today to arrange a viewing.



## Description

## Situation

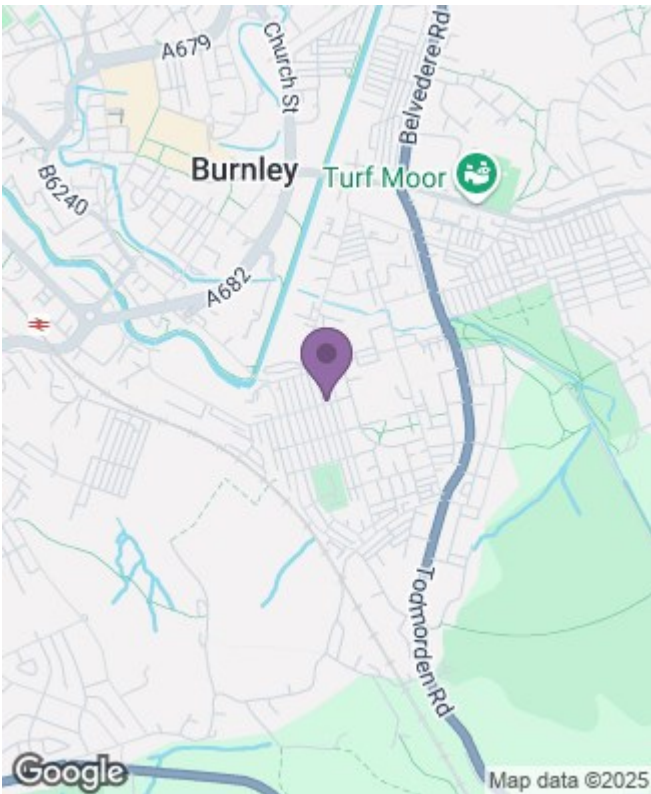
Unfurnished  
Council Tax Band: A  
Available:





Floor Plans

Area Map



Energy Performance Graph

