



E&M
PROPERTY SOLUTIONS

25 Parkinson Street, Burnley, Lancashire, BB11 3LS
£575 Per month



25 Parkinson Street, Burnley, Lancashire, BB11 3LS

£575 Per month

Mid-Terrace Home for Rent on Parkinson Street, Burnley.

Are you searching for your perfect rental property in Burnley? Look no further! This delightful mid-terrace home on Parkinson Street offers comfort, convenience, and charm.

Key Features:
2 Bedrooms:
Spacious Lounge:
Kitchen Diner:
Family Bathroom Suite:
Small Rear Yard: An easy-to-maintain outdoor space.

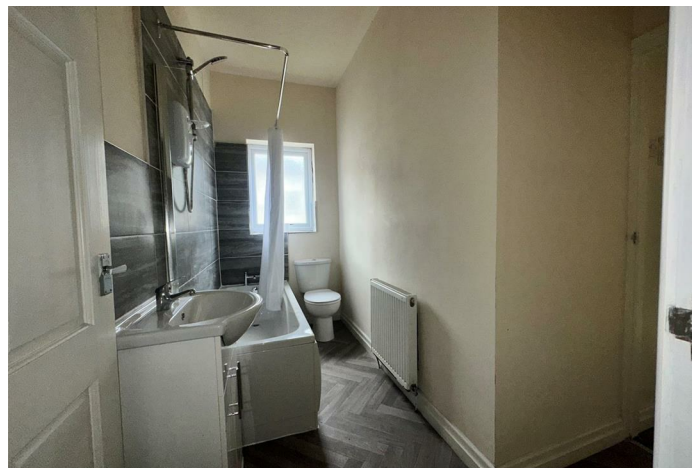
This property is situated in a convenient location, close to local amenities, schools, and transport links, making it an excellent choice for tenants seeking a well-connected and comfortable home.

Don't miss out! Contact us today to arrange a viewing.

Description



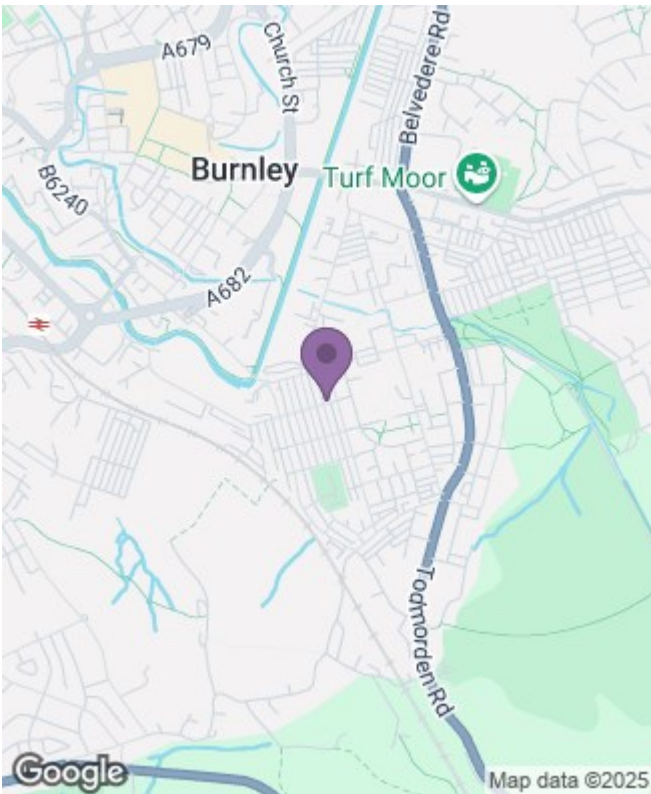
Situation



Unfurnished
Council Tax Band: A
Available:

Floor Plans

Area Map



Energy Performance Graph

