



30 Hollowhead Lane, Wilpshire, Blackburn, BB1 9JX  
Offers in the region of £265,000





## 30 Hollowhead Lane, Wilpshire, Blackburn, BB1 9JX

Offers in the region of £265,000

Gorgeous Countryside family home in Wilpshire, Blackburn.

Escape to your own piece of paradise nestled in the serene beauty of Wilpshire, Blackburn. This stunning property offers breathtaking countryside views, creating a tranquil atmosphere that's simply irresistible.

Key Features:

Spacious Interior: Step into a generously sized reception room, perfect for entertaining guests or simply relaxing with loved ones. Adjacent, discover a cozy dining area ideal for family gatherings.

Additional Living Space: Enjoy the luxury of a second reception room, seamlessly connected to the dining area and kitchen, providing versatility and ample space for various activities.

Modern Kitchen: The fully fitted kitchen boasts sleek design and convenience with integrated appliances, making meal preparation a breeze.

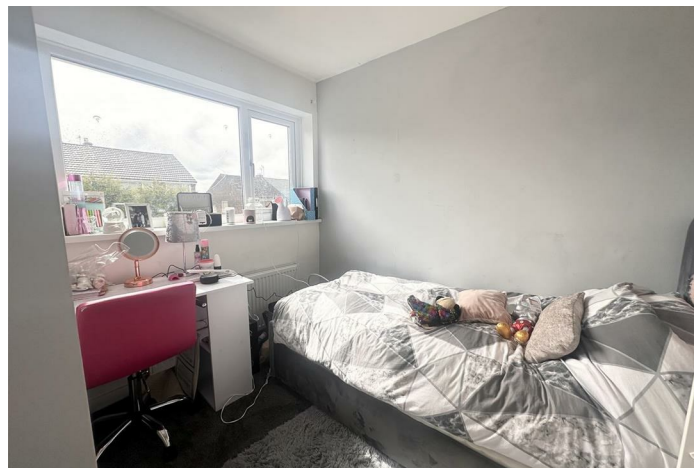
Comfortable Bedrooms: Retreat to one of the four spacious bedrooms, each offering a peaceful haven for rest and relaxation after a long day.



## Description



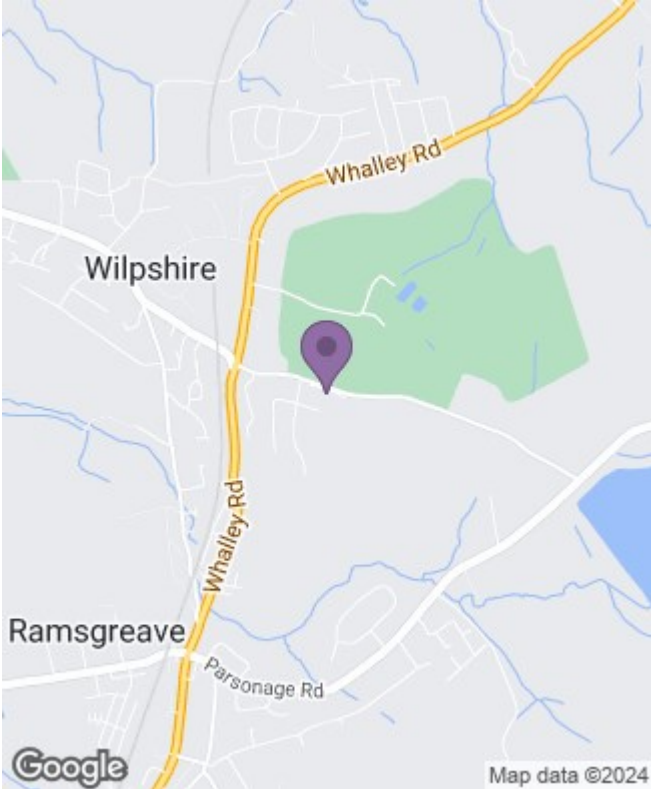
## Situation



null  
Council Tax Band: C  
Available:

# Floor Plans

# Area Map



# Energy Performance Graph

