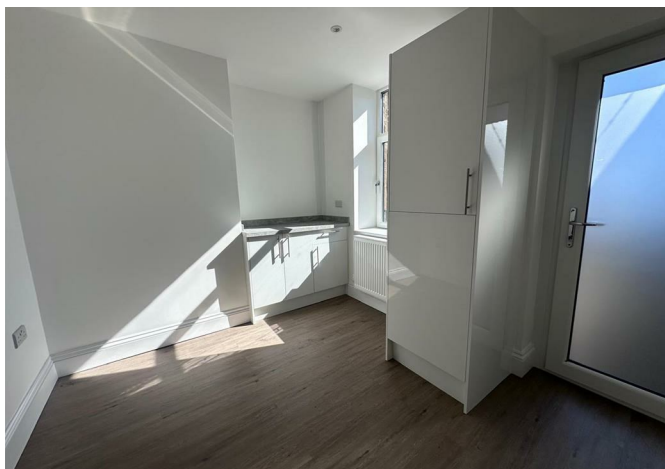




62, Manchester Rd, Burnley, Lancashire, BB11 1HN
£650 Per month



62, Manchester Rd, Burnley, Lancashire, BB11 1HN

£650 Per month

Prime Commercial Unit for Let in Burnley
Location: Just a Stone's Throw from Burnley Town Centre

Key Features:

- Fully Refurbished: Finished to a high standard, ensuring a modern and professional environment.
 - Versatile Space: Suitable for various business types, providing flexibility for retail, office, or service-based operations.
 - Spacious Shop Floor: Ample room for product displays, customer interactions, or office setups.
 - Convenient Amenities: Includes a WC and a kitchenette, ensuring comfort and convenience for staff and clients.
 - Prime Location: Benefit from high visibility and easy access to Town Centre amenities.
 - Ready to Occupy: Move-in ready, saving you time and renovation costs.
 - Growth Potential: Situated in a bustling area, ideal for attracting new customers and growing your business.
- Don't miss this excellent opportunity to establish your business in a prime Burnley location. Contact us today to arrange a viewing!

It is the prospective tenant's responsibility to verify that all appliances, services and systems are in working order, and are of adequate capacity and suitable for their purpose.

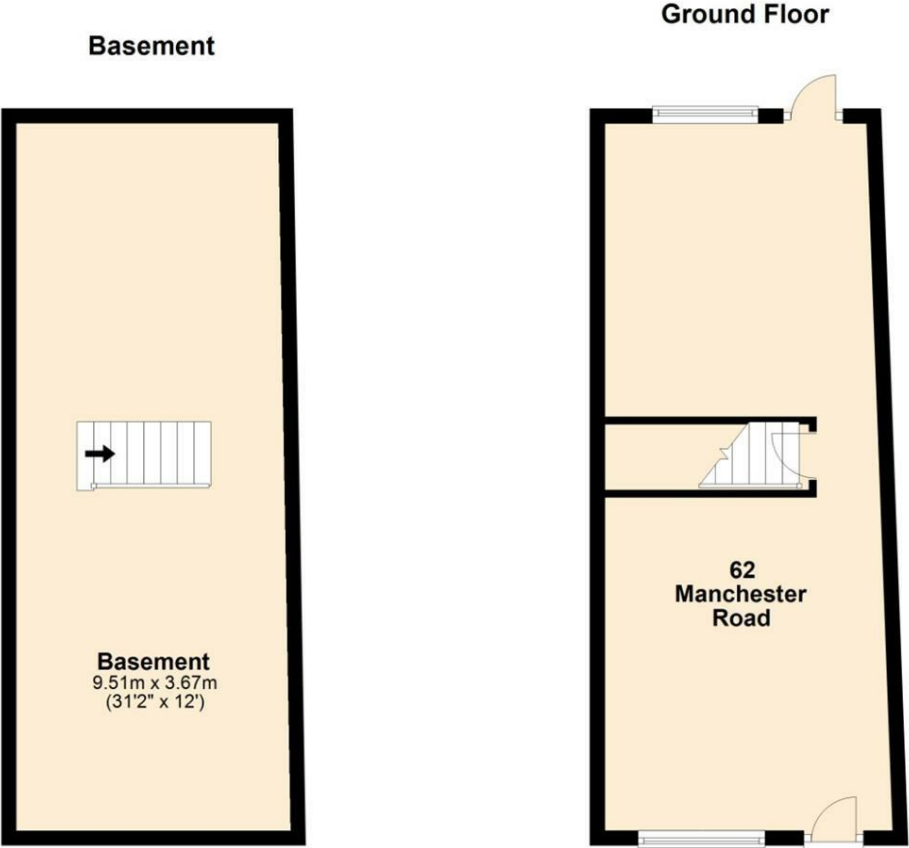
Description

Situation



Unfurnished
Council Tax Band:
Available: 1st April 2025

Floor Plans



Total area: approx. 69.2 sq. metres (744.6 sq. feet)

Whilst every attempt has been made to ensure the accuracy of the floor plan contained here, measurements of doors, windows, rooms and any other items are approximate and no responsibility is taken for any error, omission, or mis-statement. The plan is for illustrative purposes only and should be used as such by any prospective purchaser. The services, systems and applicants have not been tested no guarantee as to their operability or efficiency can be given.
Plan produced using PlanUp.

Area Map



Energy Performance Graph

