



16 Peart Street, Burnley, BB10 1EP  
Asking price £89,995



## 16 Peart Street, Burnley, BB10 1EP

Asking price £89,995

Welcome to this charming mid-terrace house located on Peart Street in Burnley. This delightful property, built in 1900, boasts a generous 1,001 sq ft of living space, perfect for those seeking a spacious home.

Upon entering, you are greeted by two inviting reception rooms. The separate kitchen offers a functional space, family bathroom suite and 2 spacious bedrooms.

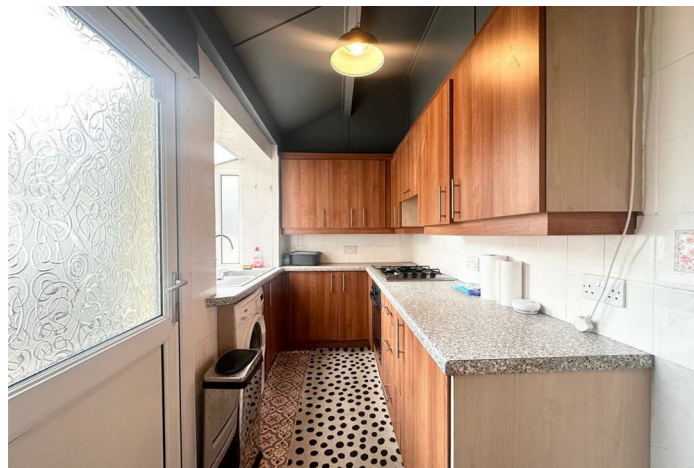
Located in a sought after area of Burnley, near the Hospital.

Don't miss the opportunity, Contact us today to arrange a viewing and take the first step towards owning this lovely property on Peart Street.

## Description



## Situation



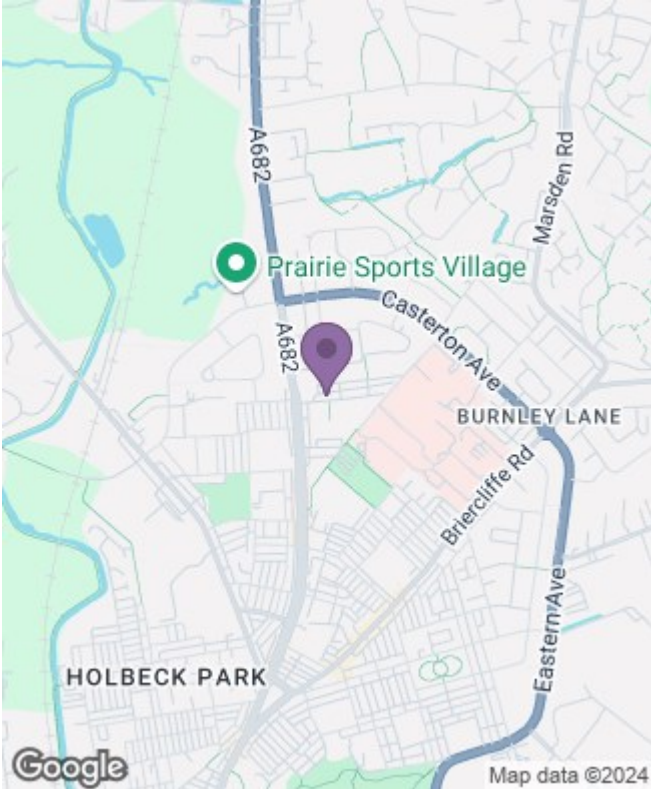
null

Council Tax Band:

Available:

# Floor Plans

# Area Map



# Energy Performance Graph

