



4 Kingfisher Mews, Wombwell, S73 0WD
Offers in the region of £280,000



4 Kingfisher Mews, Wombwell, S73 0WD

Offers in the region of £280,000

A Stunning Modern Family Home in a Prime Location

Nestled within a sought-after mews location, this beautifully presented four-bedroom detached home offers the perfect combination of modern style, practicality, and space. Designed with family living in mind, this property boasts an impressive second-floor master suite, a bright conservatory, a landscaped garden, and a detached garage with driveway.

The standout feature of this home is without a doubt the luxurious master bedroom suite on the second floor. This private retreat is enhanced with bespoke fitted bedroom furniture, stylish décor, and an en-suite bathroom, offering a perfect space to relax at the end of the day. The level of craftsmanship in the built-in storage solutions ensures a clutter-free and sophisticated look, making it a true highlight of the property.

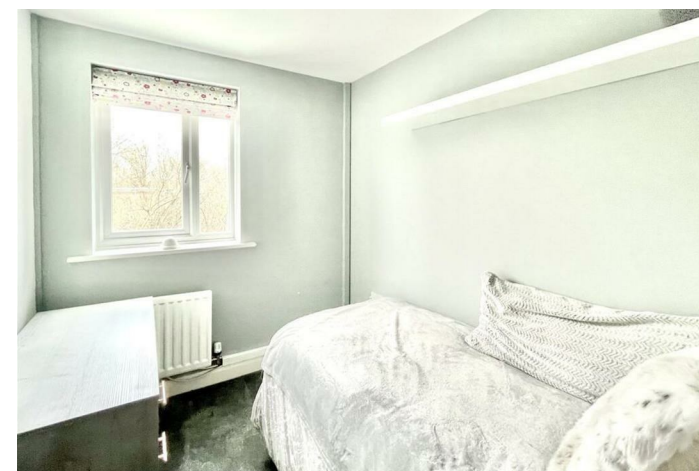
The ground floor boasts a modern dining kitchen, equipped with high-quality units and integrated appliances, making meal preparation a breeze. The well-proportioned living room is ideal for cosy family nights in, while the conservatory to the rear floods the space with natural light and provides an additional relaxation or entertainment area.

On the first floor, you'll find three well-sized bedrooms, each offering ample space for family members or guests. The family bathroom is fitted with a contemporary suite, ensuring both style and functionality. Whether used as bedrooms, home offices, or playrooms, these rooms offer great flexibility to suit your needs.

Description



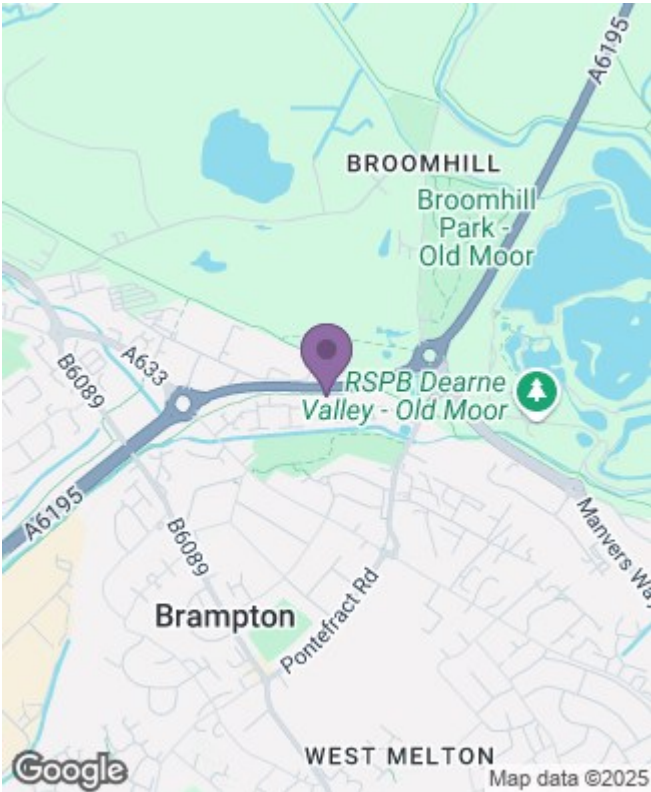
Situation



null
Council Tax Band:
Available:

Floor Plans

Area Map



Energy Performance Graph

