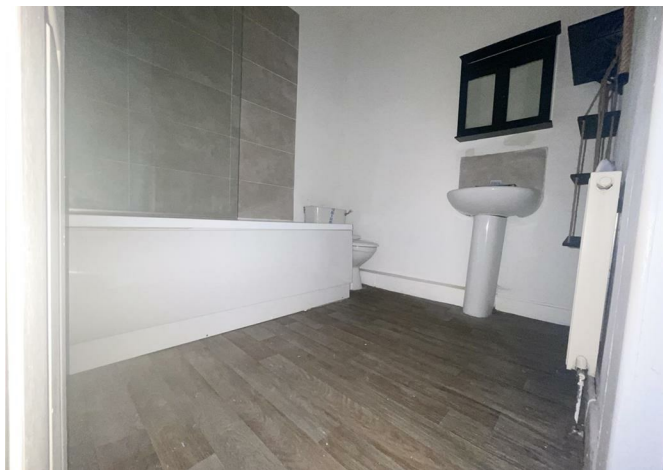




E&M
PROPERTY SOLUTIONS

136 Leyland Road, Burnley, BB11 3DN
Asking price £55,000



136 Leyland Road, Burnley, BB11 3DN

Asking price £55,000

Located on Leyland Road in the charming town of Burnley, Built in 1900, the property retains a sense of history while providing a comfortable and inviting atmosphere. Spanning 657 square feet.

The property boasts two spacious bedrooms, making it suitable for small families, couples, or individuals seeking extra space.

With its charming features and prime location, this mid-terrace house on Leyland Road presents an excellent opportunity for those seeking a new home or a sound investment. Don't miss the chance to make this property your own.

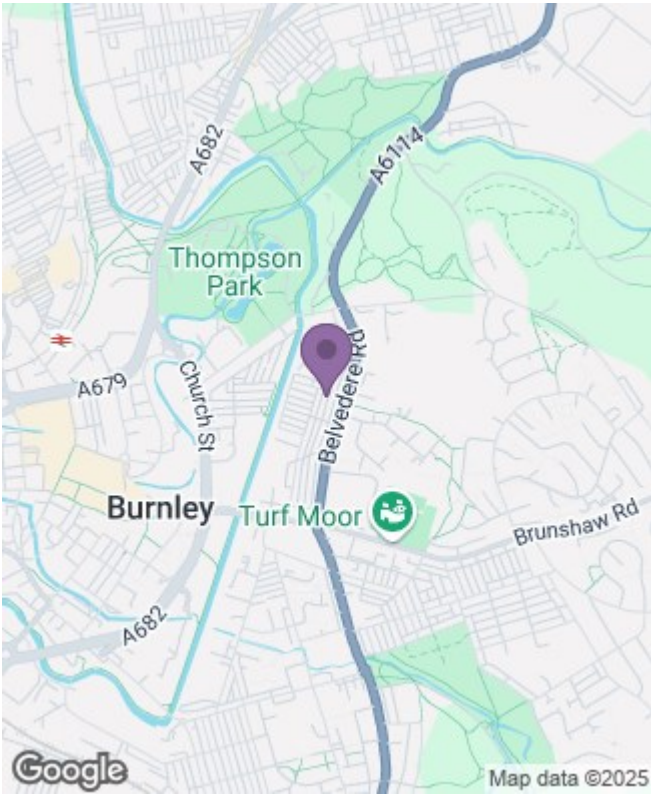
Description

Situation

null
Council Tax Band: A
Available:

Floor Plans

Area Map



Energy Performance Graph

