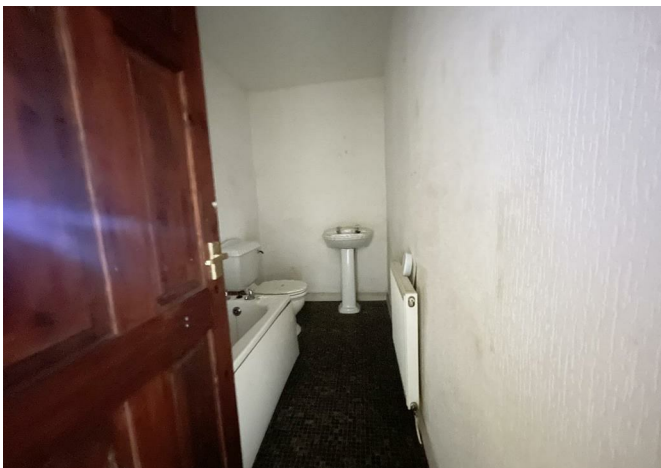




FOR SALE
E&M
PROPERTY SOLUTIONS
01282 711560

24 Pine Street, Burnley, BB11 3AE
£45,000



24 Pine Street, Burnley, BB11 3AE

£45,000

Nestled on Pine Street in Burnley, this mid-terrace house presents an excellent opportunity for those seeking a project or a promising investment. Spanning approximately 775 square feet, the property features two well-proportioned bedrooms and a spacious reception room, providing ample space.

The house is in need of refurbishment, making it an ideal choice for investors looking to capitalise on the high rental demand in the area.

Conveniently located close to the town centre, residents will enjoy easy access to a variety of local amenities, including shops, schools, and transport links.

This prime location not only enhances the property's appeal but also ensures a steady flow of potential tenants, should you choose to rent it out.

In summary, this two-bedroom mid-terrace house on Pine Street is a fantastic opportunity for those looking to invest in a property with great potential. With the right vision and effort, this home could be transformed into a desirable residence in a thriving community.

Description

Situation



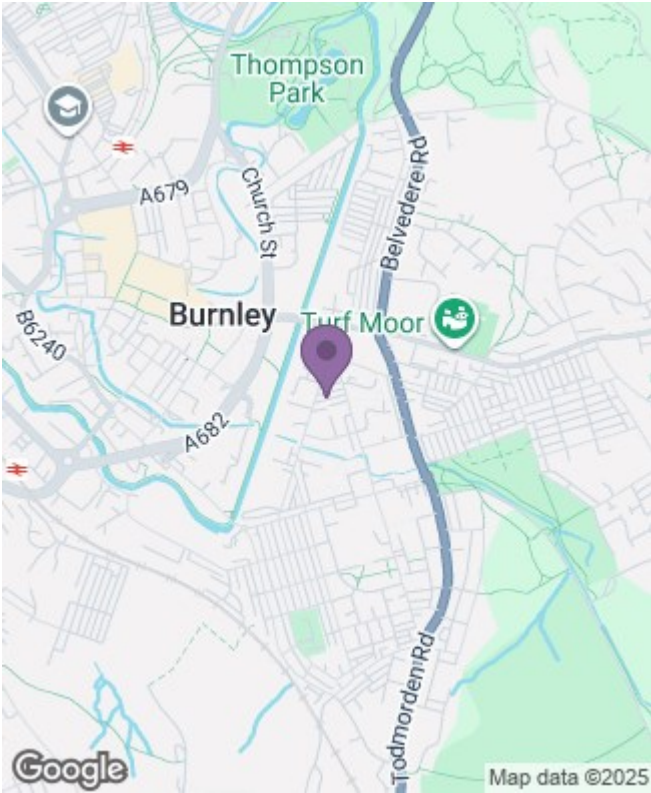
null

Council Tax Band: A

Available:

Floor Plans

Area Map



Energy Performance Graph

