



10 Hallwood Close, Burnley, BB10 2LQ
Offers over £290,000



10 Hallwood Close, Burnley, BB10 2LQ

Offers over £290,000

For Sale – 10 Hallwood Close, Reedley, Burnley BB10
Spacious 4-Bedroom Detached Family Home in a Sought-After Location

Situated in the highly desirable area of Reedley, this impressive 4-bedroom detached property offers generous living space, modern comforts, and excellent outdoor areas, perfect for families looking for a forever home.

Key Features:

- 4 Bedrooms – including a versatile ground-floor bedroom ideal for guests or multi-generational living.
- 2 Bathrooms – family bathroom plus a stylish en-suite to the master bedroom.
- Ground Floor WC for added convenience.
- Bright & Spacious Living Areas designed for modern family life.
- Large Double Garage with power, lighting, and plenty of storage.
- Driveway Parking for multiple vehicles.

Description

Situation

null
Council Tax Band: E
Available:



Floor Plans

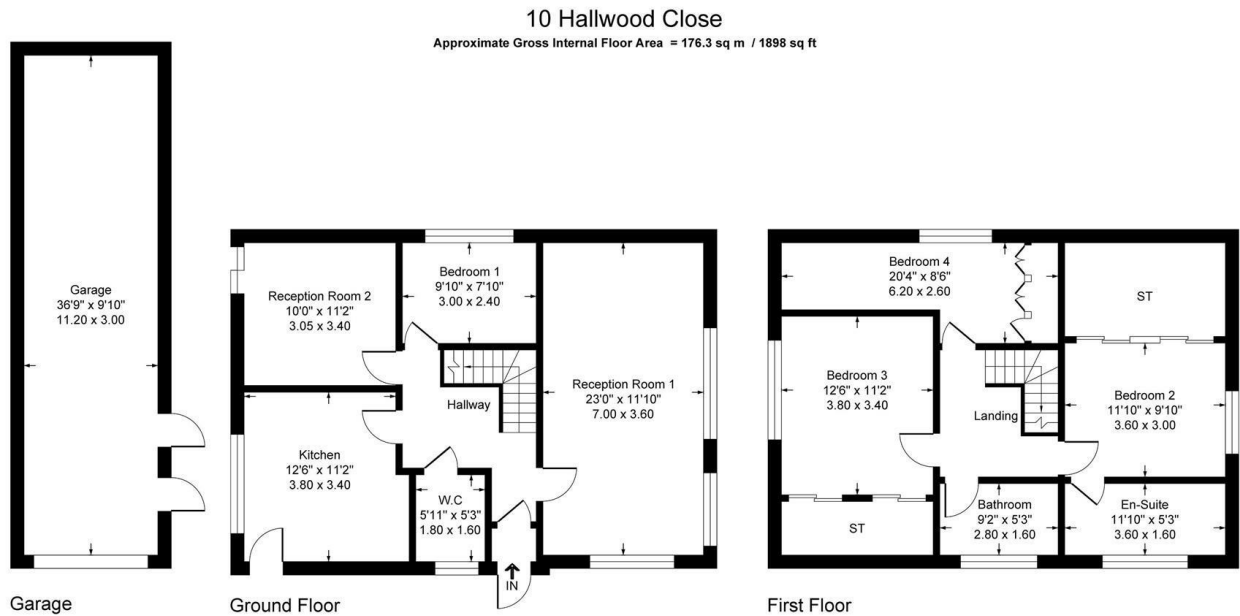
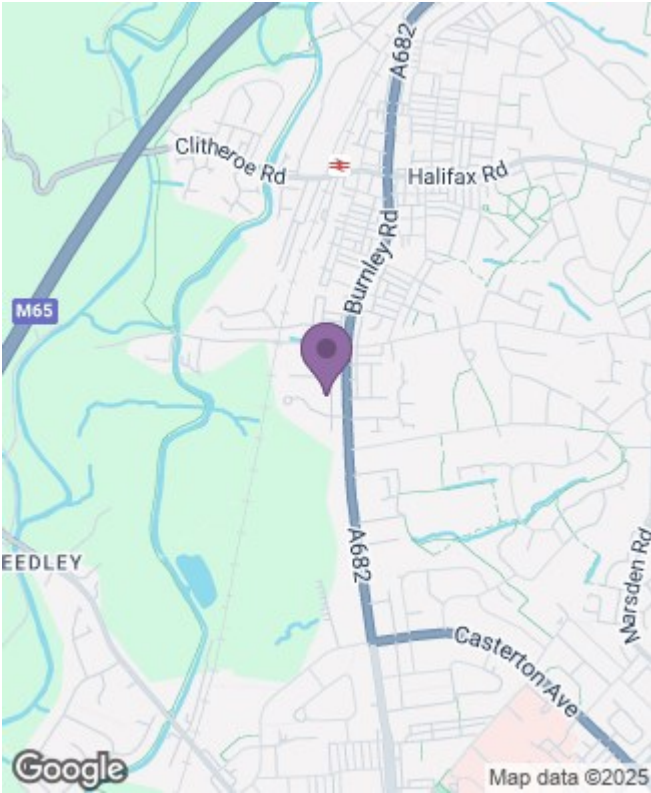


Illustration for identification purposes only, measurements are approximate, not to scale.

Area Map



Energy Performance Graph

