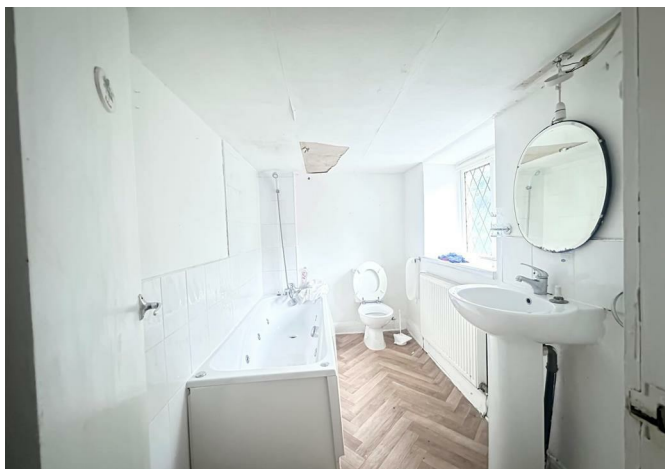
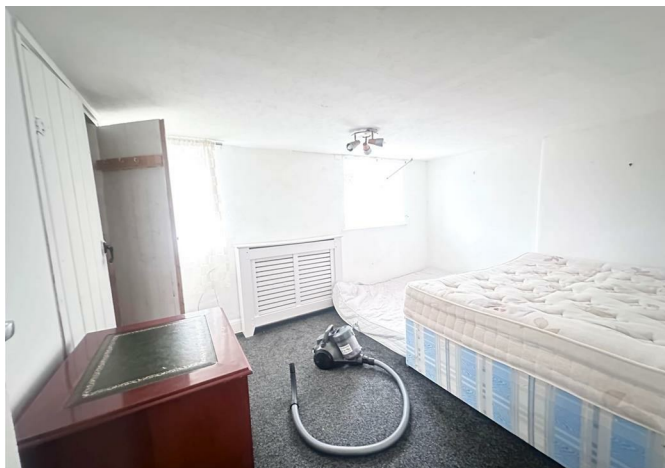




23 Lane Ends, Nelson, BB9 0PX  
Offers in the region of £74,995





## 23 Lane Ends, Nelson, BB9 0PX

### Offers in the region of £74,995

Nestled in the charming area of Lane Ends, Nelson, this delightful end-terrace cottage offers a perfect blend of character and modern convenience. Built in 1900, the property boasts a generous living space of 1,055 square feet, making it an ideal choice for first-time buyers or investors seeking a promising opportunity.

The home features a welcoming reception room, perfect for relaxing or entertaining guests. With two well-proportioned bedrooms, there is ample space for comfortable living. The bathroom is conveniently located, catering to the needs of a small family or professionals alike.

One of the standout features of this property is its proximity to local amenities. Residents will find a variety of shops and services just a short stroll away, ensuring that daily necessities are easily accessible. Additionally, excellent transport links are nearby, providing convenient access to surrounding areas and making commuting a breeze.

This cottage is not only a lovely home but also presents an ideal investment opportunity, given its desirable location and potential for rental income. Whether you are looking to settle down or expand your property portfolio, this charming end-terrace house in Lane Ends is certainly worth considering. Don't miss the chance to make this delightful property your own.

## Description



## Situation



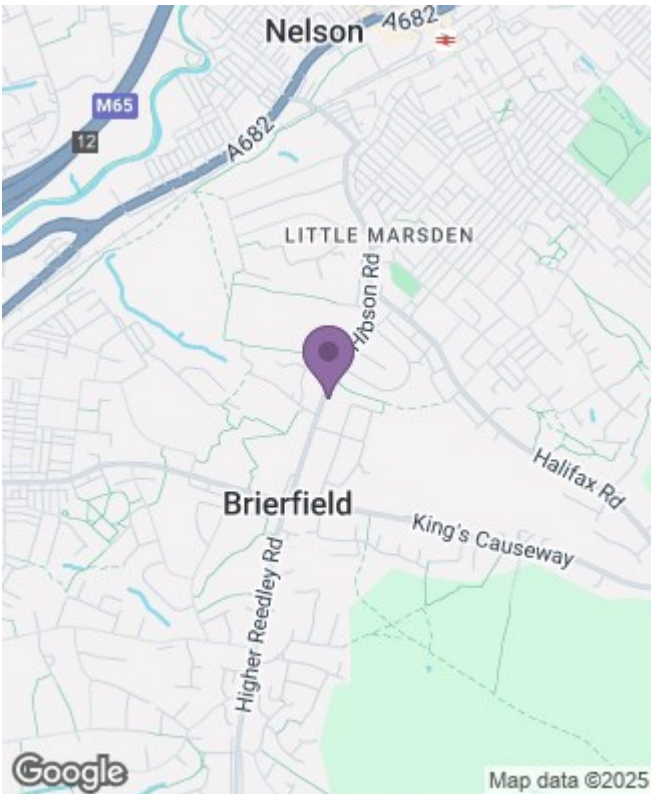
null

Council Tax Band:

Available:

Floor Plans

Area Map



Energy Performance Graph

