

E&M
PROPERTY SOLUTIONS



13 Scarlett Street, Burnley, Lancashire, BB11 4LQ
£600 Per month



13 Scarlett Street, Burnley, Lancashire, BB11 4LQ

£600 Per month

E&M Property Solutions are excited to offer to the lettings market this spacious two-bedroom family home located at 13 Scarlett Street, Burnley. The property comprises a spacious reception room, a fully fitted modern kitchen and a dining area, two well-proportioned bedrooms, and a modern family bathroom suite. The residence has been recently refurbished and features neutral decor throughout, providing a welcoming and contemporary living environment. The location offers an excellent opportunity to access all the amenities, attractions and transport links Burnley has to offer, making it an ideal location for easy commuting. The M65 motorway is within easy reach, and Burnley Manchester Road and Burnley Central railway stations offer easy access to the nearby towns and cities, including Manchester, Blackburn, and Preston.

For those who love the outdoors, Burnley has many parks and green spaces to explore, including Townley Park, which is home to a golf course, playgrounds, and wildlife. For cultural activities, the Burnley Mechanics Theatre offers various performances throughout the year.

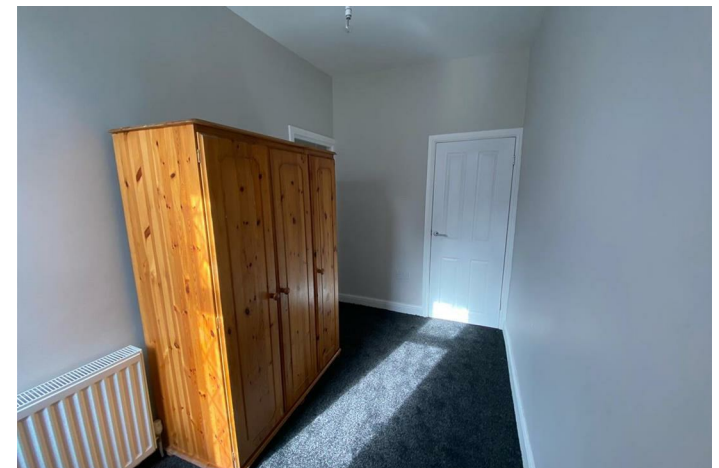
In terms of work opportunities, Burnley is home to several large employers, including the nearby Lawn Traffic Systems, and the Burnley General Hospital. Overall, 13 Scarlett Street offers a fantastic opportunity for families seeking a high-quality living environment in a convenient location, with easy access to all amenities, attractions, and transport links.

To arrange a viewing or for further information, kindly contact us directly.

Description

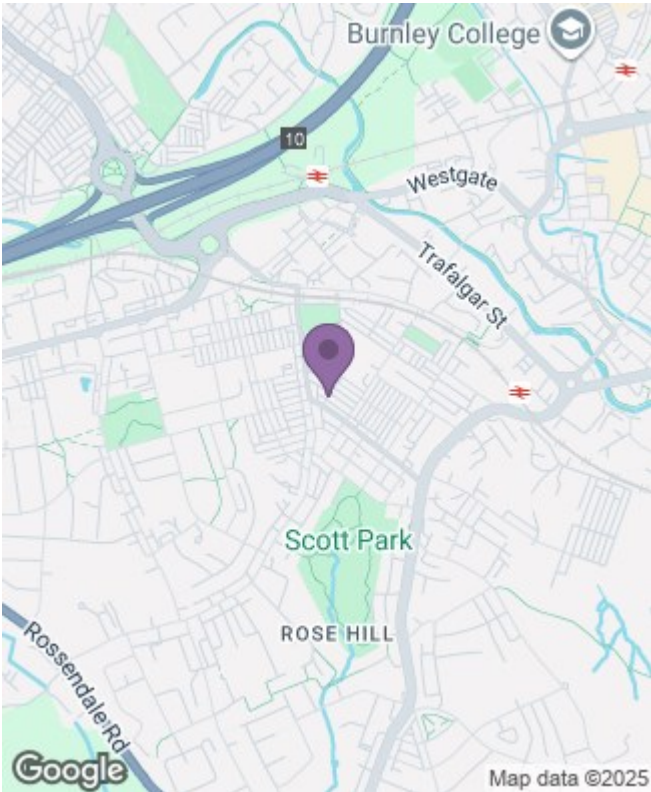
Situation

Unfurnished
Council Tax Band: A
Available:



Floor Plans

Area Map



Energy Performance Graph

