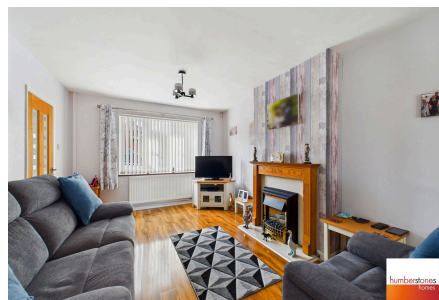
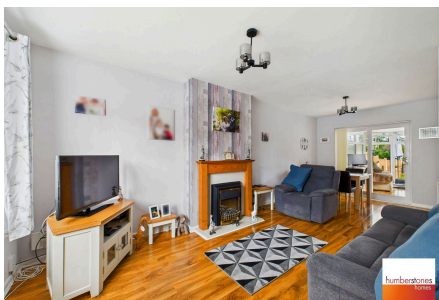


Oldacre Road, Oldbury, B68 0RF

£230,000

2 1 1



SUPERB, GOOD SIZED 2 BEDROOMED END TERRACE which has been **CONSIDERABLY IMPROVED** to provide a **WELL PRESENTED FAMILY HOME**, situated within this **POPULAR LOCATION**. CALL US TO BOOK A VIEWING ASAP. Explore this property with our 360 degree virtual tour.



Key Features

- SUPERB, MUCH IMPROVED AND VERY WELL PRESENTED 2 BED END TERRACE HOME
- EXPLORE THIS PROPERTY WITH OUR 360 DEGREE VIRTUAL TOUR
- CONSERVATORY WITH LOVELY VIEWS OVER REAR GARDEN
- 2 DOUBLE BEDROOMS AND RE-FITTED SHOWER ROOM
- COUNCIL TAX BAND A.
- POPULAR LOCATION - DRIVE PROVIDING OFF ROAD PARKING
- SPACIOUS 21FT THROUGH LOUNGE/ DINING AREA
- RE-FITTED KITCHEN - SIDE UTILITY/ STORE AND DOWNSTAIRS WC
- DOUBLE GLAZED AND GAS CENTRAL HEATING
- EPC RATING D.

